



Boise Cascade



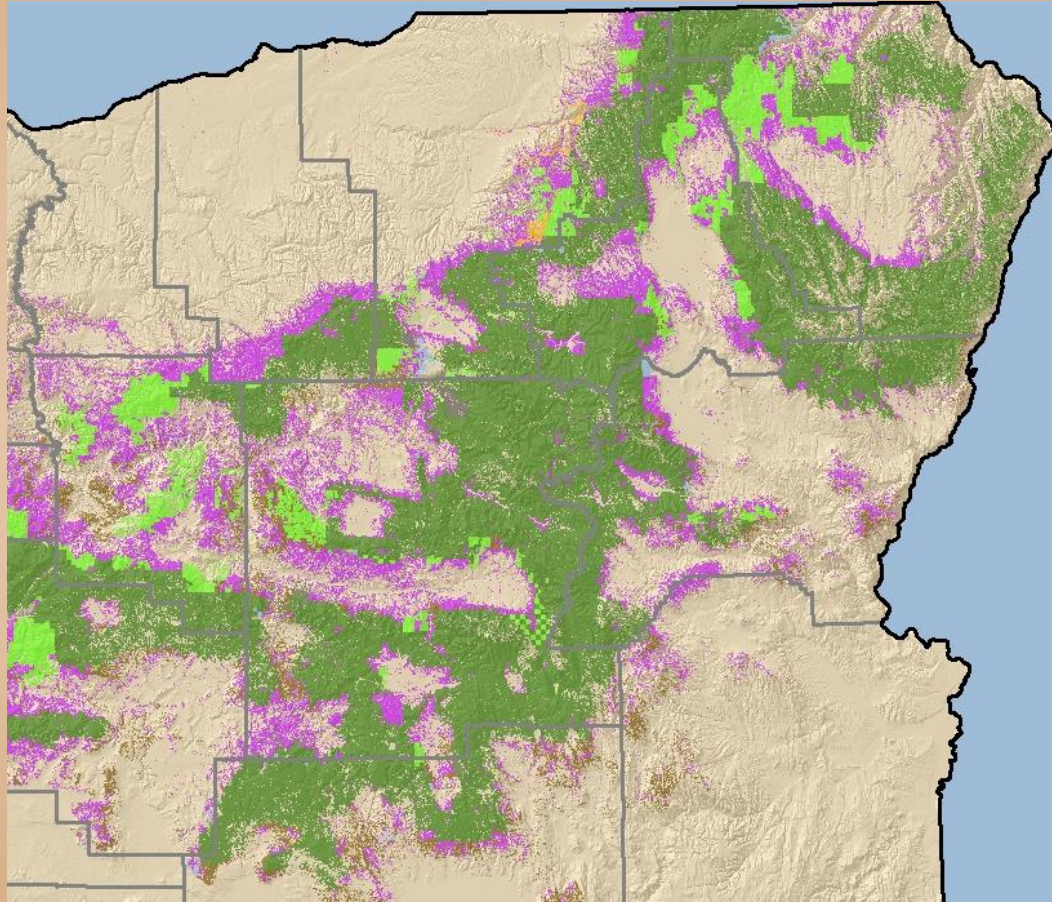
## Collaboration Facilitators and Impediments

Lindsay Warness  
Forest Policy Analyst  
Boise Cascade, Inland Region



Boise Cascade

# Northeast Oregon Forestland

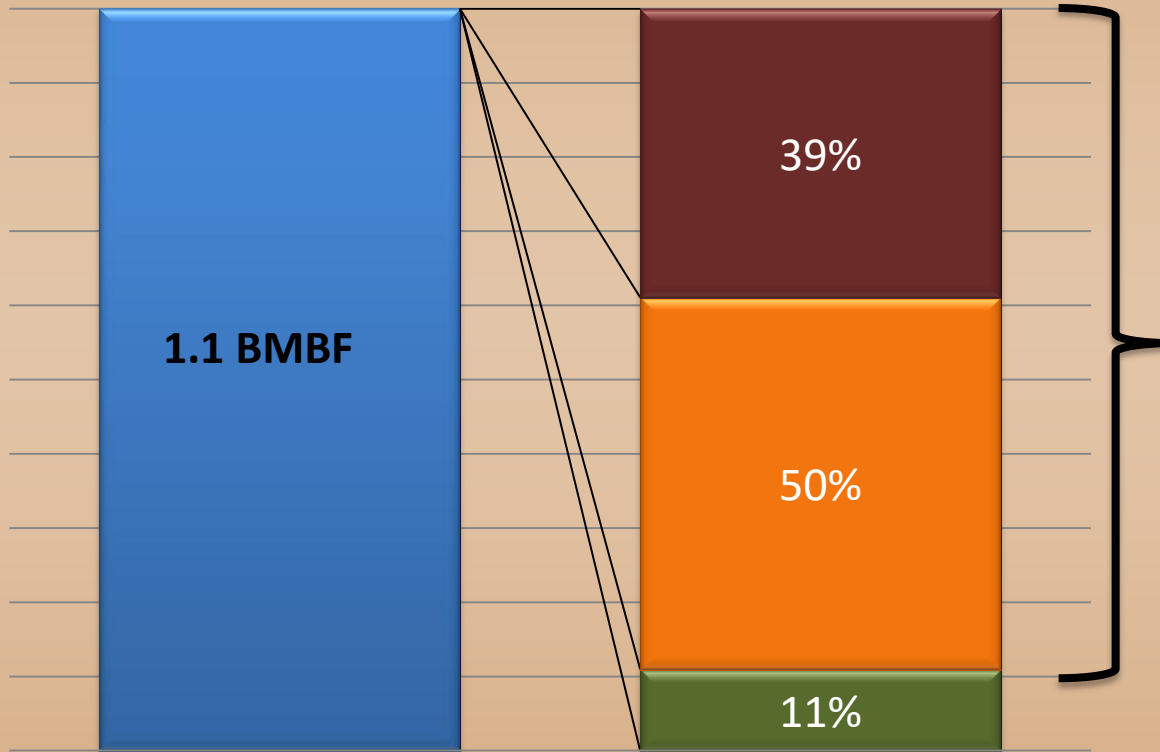


- |                      |          |
|----------------------|----------|
| ■ National Forest    | ■ BLM    |
| ■ Private Industrial | ■ State  |
| ■ "Family" Forest    | ■ Tribal |

- Blue Mountain National Forest
  - 75% of commercial forest lands in region
  - 20% of total harvest in 2010



## Blue Mountain Forests



Gross Growth

What Happens?

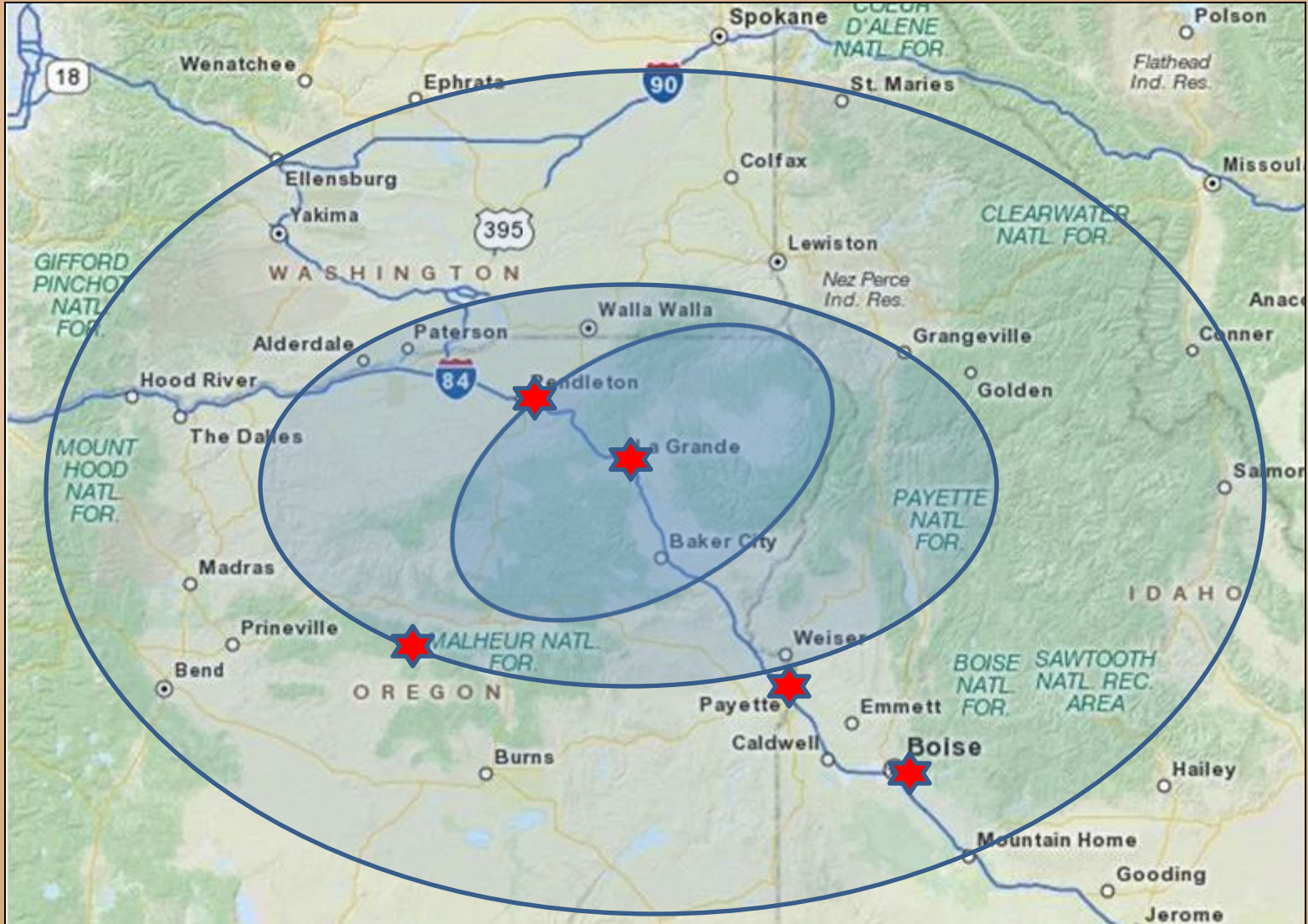
■ Removals   ■ Mortality   ■ Density Increase

Standing Inventory = 45 BBBF



Boise Cascade

# Where We Collaborate?





# Collaborative Enablers

- Strong Leadership
- Organizational Structure
- Defined Mutual Purpose
- Humanization
- Strong Facilitation
- Project Outcome Diversity
- Regular Meetings
- Frequent Field Tours
- Consensus Seeking w/backup
- Membership Diversity
- Specific Decision Documentation
- Operating Principles
- Code of Conduct
- Investment
- Direct Agency Involvement
- Humbleness



- Uncertainty in Outcome
- Lack of true investment
- Consensus Driven
- NEPA process vs. Collaboration
- Policy vs. collaborative innovation and science
- Time Investment
- Member Retention
- Turnover
- Not documenting agreements explicitly
- Collaborative Process
- Negotiation
- Constant search for funding/facilitation



- Certainty in Outcomes
- Return on Investment
- Additional Expedited Authorities
- Incentivization to Collaborate
- Outside Investment in Collaboration
- Ability to Innovate and Try New Things.



Boise Cascade



Thank you!  
QUESTIONS