



Association
for Mineral
Exploration

Pacific North West Economic Region

Calgary, Alberta - July 18, 2016

Glen W. Wonders

Vice President, Technical & Government Affairs, AME



Association
for Mineral
Exploration

Aboriginal Engagement in the BC Mineral Exploration Industry

Outline

About AME

State of the Industry

Successful Exploration

Socially Responsible

Exploration and

Aboriginal Relations

AME Roundup





About AME

BOX 25 9448-98.22
GFR-09

About AME



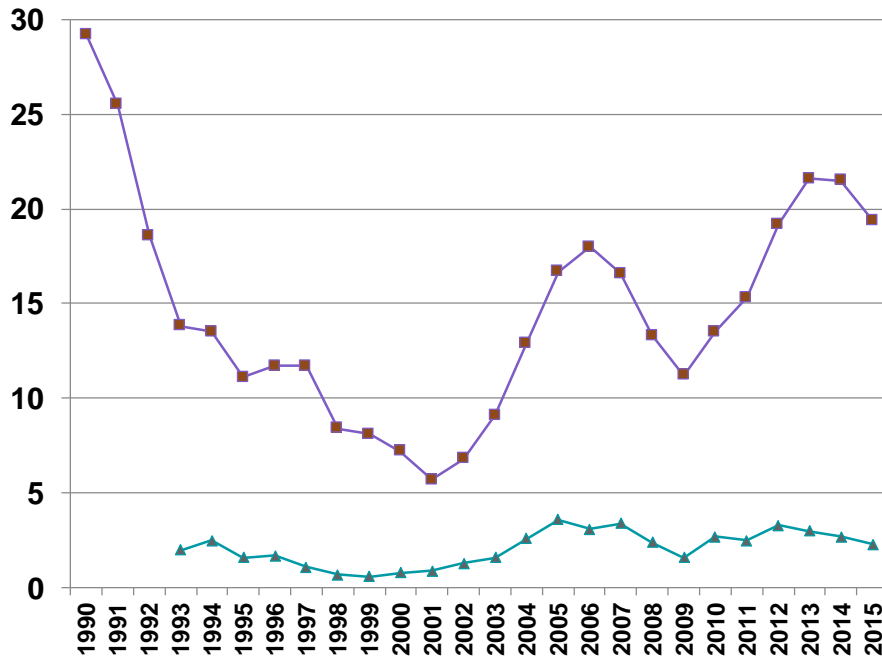
- Established in 1912
- Funded by industry members, not government – a non-profit organization
- Non-partisan advocates for successful and socially responsible exploration and development
- Proud host of AME Roundup

State of the Industry



State of the Industry

- More than 100 active exploration projects in BC
- Exploration expenditures down to \$272 million in 2015 from high of \$680 million in 2012



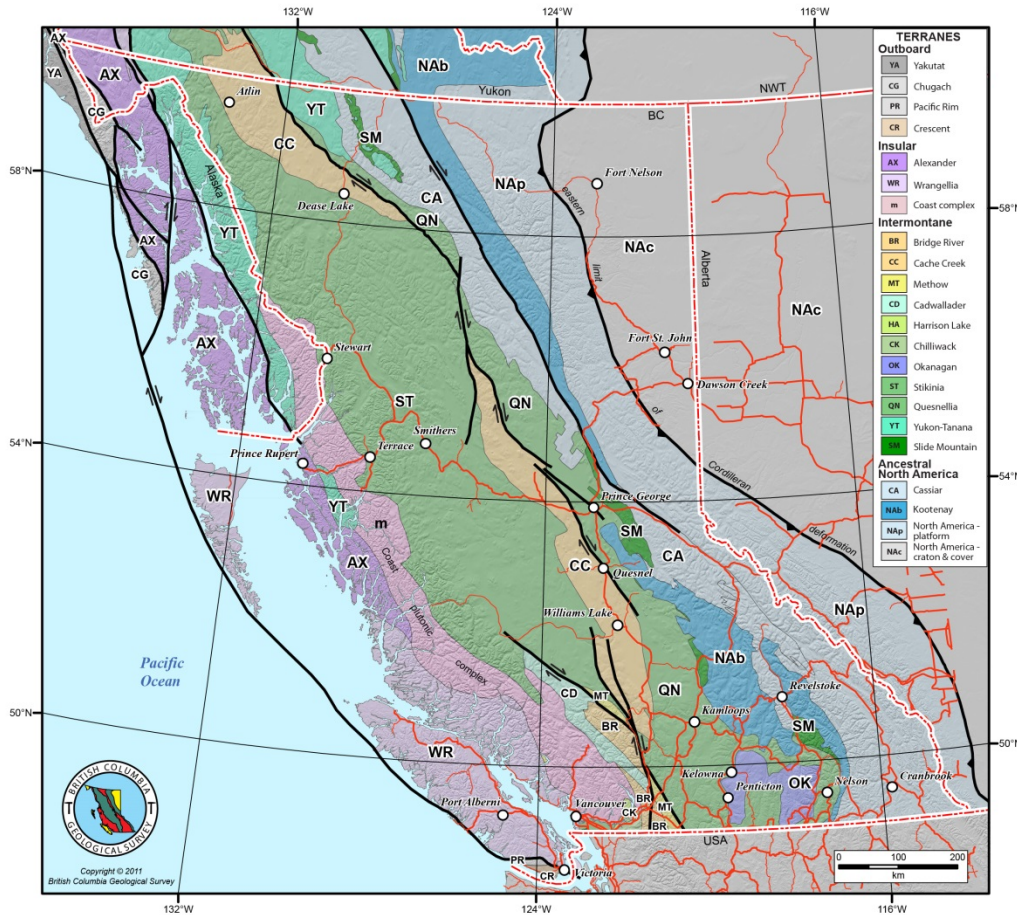
**BC percentage of
Canada , 19.4% in 2015**

**BC percentage of world,
2.3% (est.) in 2015**

Successful Exploration

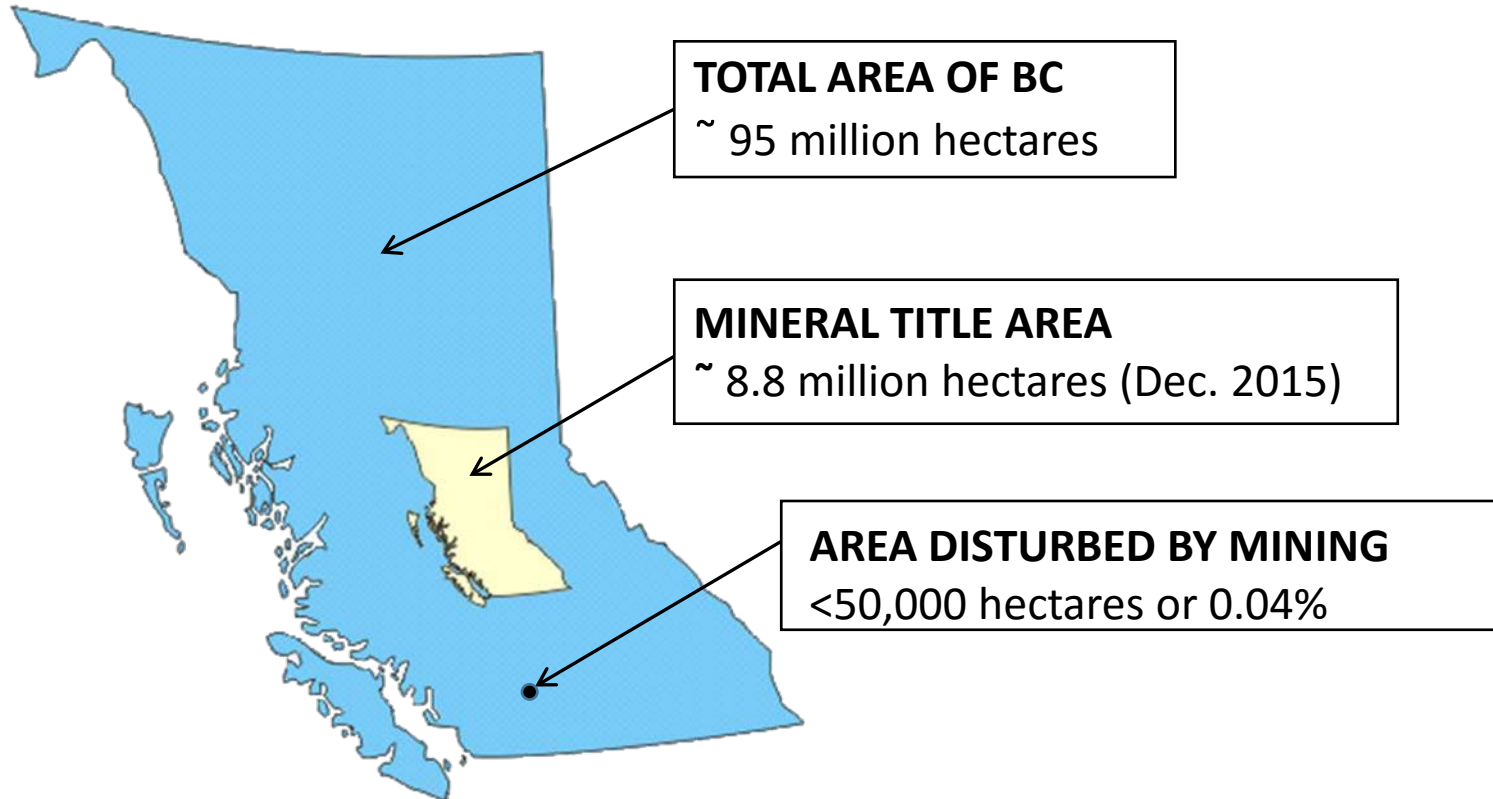


BC's Geology and Land Access



- Outstanding mineral potential and still under explored
- Also great bio-geoclimatic diversity, unique in Canada
- Two vitally important factors in exploration

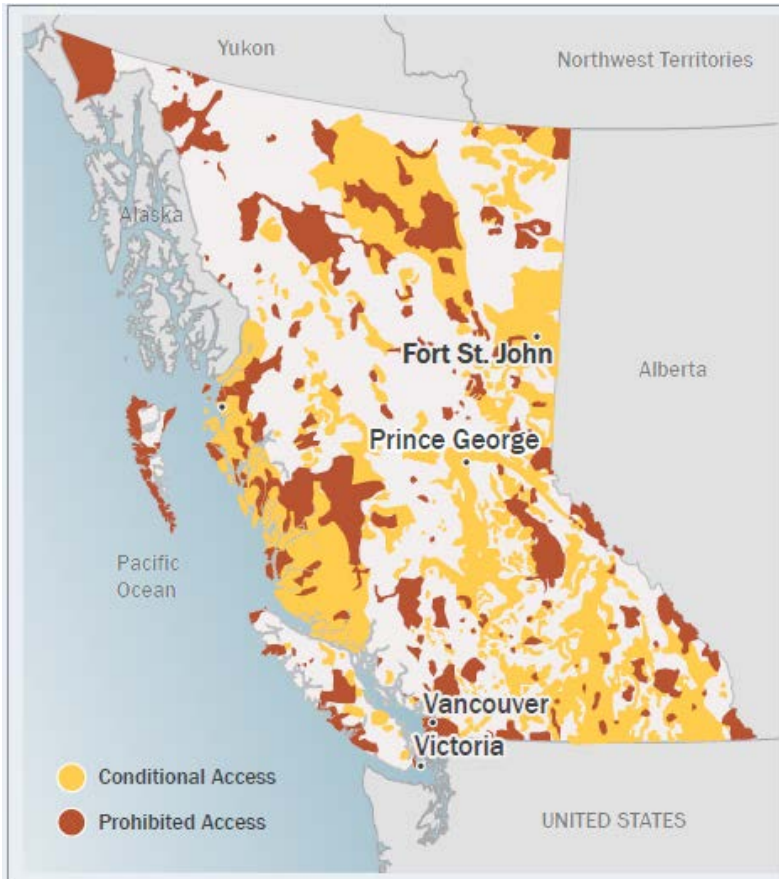
Land Access and Use



Land Access and Use

- Understanding land access and use designations are vital to industry's success
- AME has developed robust land use data sets, with ability to analyze the dynamic data over time
- Report & data findings were shared with public in January 2016.
- Working with government to better consider mineral development potential in land use decision making

Land Access and Use



18.6%
Prohibited



32.9%
Conditional

Socially Responsible Exploration & Aboriginal Relations



Aboriginal Relations and Engagement

AME is fully supportive of the meaningful reconciliation with Canada's Inuit, First Nations and Metis citizens

We will continue to respectfully engage Aboriginal people and industry via:

- ✓ **AME Roundup and the Gathering Place annual conference**
- ✓ **Aboriginal Relations Committee (since 2003) varied outreach activities and regional support**
- ✓ **Collaborating with First Nations, Federal, Provincial, Local governments and our members on shared interests, opportunities and challenges**
- ✓ **Creating and sharing the AME Aboriginal Engagement Guidebook – Reissued May 2015**

Integrated Social Responsibility



- **AME ISR Committee**
Events, Session, Short Course
at Roundup
- **An eye on relevant legislation**
Extractive Sector Transparency
Measures Act (ESTMA) –
advice to members and
industry

AME Roundup



AME Roundup



- Roundup 2016 a success with more than 5,400 delegates from 33 countries at Canada Place
- AME's Roundup 2017 conference will be held January 23-26, 2017

AME Roundup – the Gathering Place



- The Gathering Place is a focused 2 day workshop on Aboriginal focused matters
- A place for sharing and respectful dialog on issues, opportunities and solutions

www.amebc.ca



Association
for Mineral
Exploration

Suite 800 – 889 West Pender Street
Vancouver, BC V6C 3B2

Tel: 604.689.5271

Fax: 604.681.2363

Thank you!



@ AME_BC



Association for Mineral Exploration



AME