

# Growing Idaho's Talent Pipeline

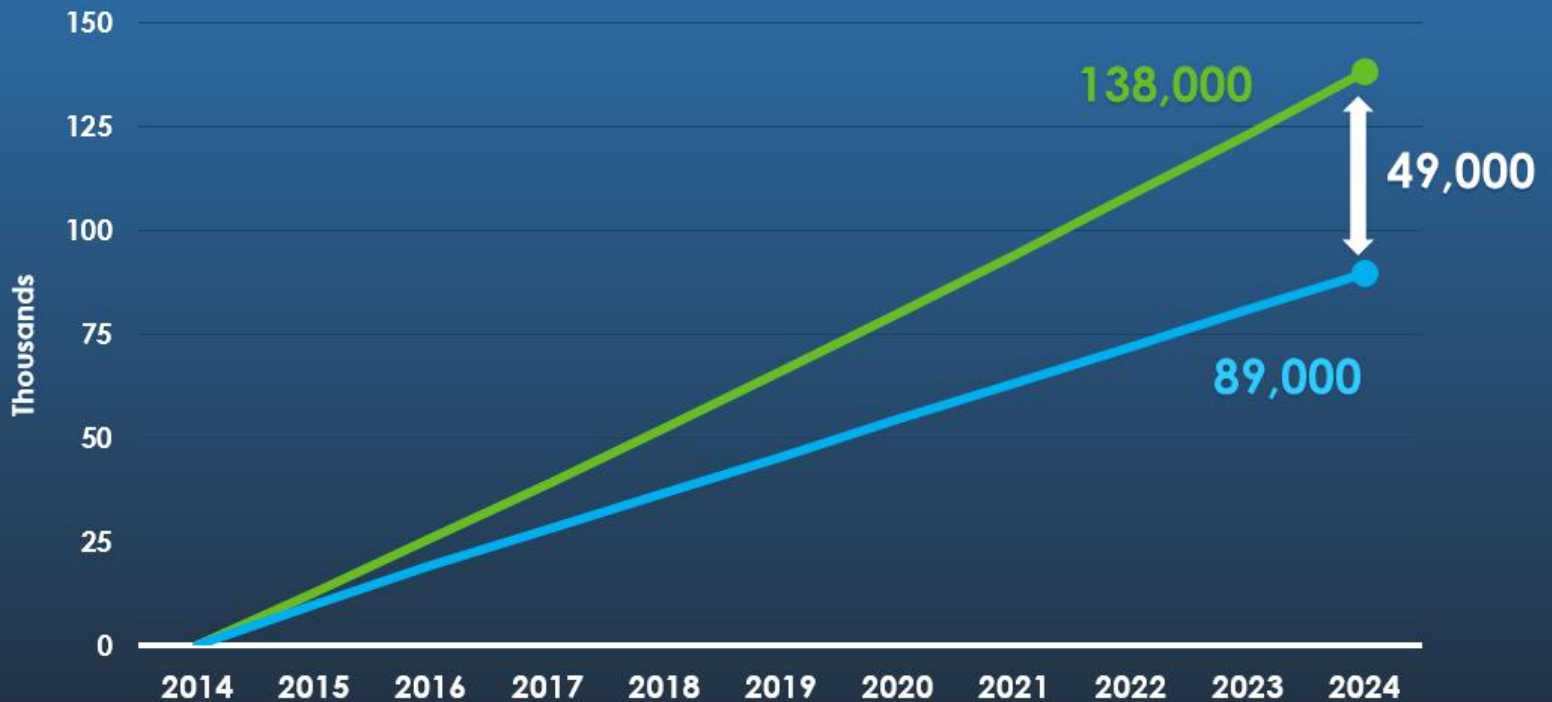
Presented by: **Dwight Johnson**  
ICTE State Administrator

We prepare Idaho's youth and adults for high-skill, in-demand careers.



# Our Challenge: Labor Supply

## Projected Growth in **Jobs** and **Workforce** 2014 – 2024



Source: Idaho Department of Labor Long Term Industry Projections and Population Forecast

We prepare Idaho's youth and adults for high-skill, in-demand careers.

IDAHO

Career & Technical  
Education



Expand Capacity to Meet Workforce Demand

# Critical Workforce Ratio 1:2:7

Required Education

Available Jobs

**1** Graduate Degree



**2** Bachelor Degrees



**7** 1-Year Cert OR 2-Year Degrees



[1] Gray, K. & Herr, E. (2006). *Other Ways to Win: Creating Alternatives for High School Graduates. Third Edition.* Thousand Oaks: Corwin Press.

We prepare Idaho's youth and adults for high-skill, in-demand careers.



## What is Career & Technical Education?



Agriculture &  
Natural Sciences



Family & Consumer  
Sciences



Health  
Professions



Engineering &  
Technology



Business  
Management &  
Marketing



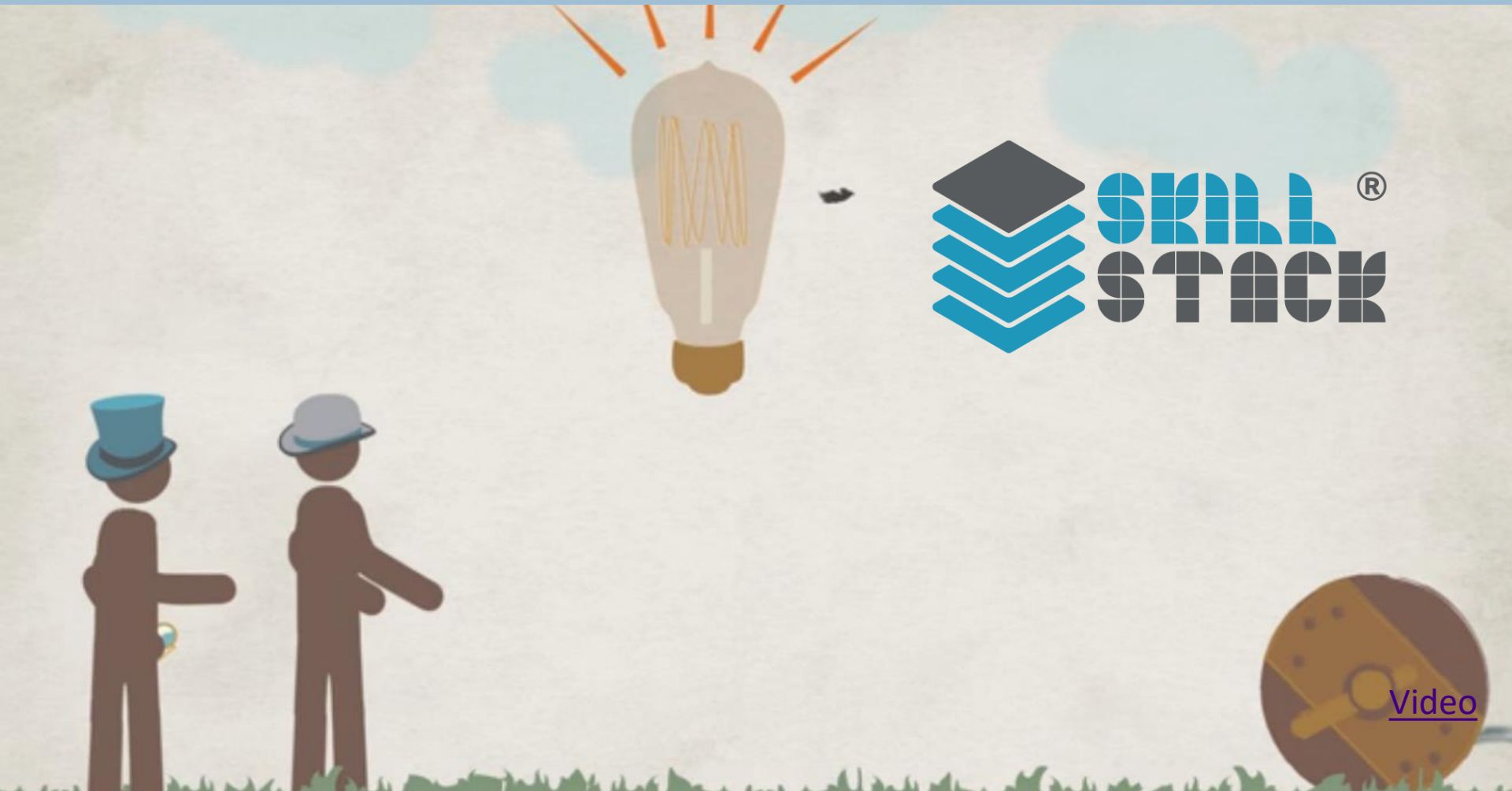
Skilled & Technical  
Sciences

**The nexus between education and employment.**

## What is CTE's value?

- Connects students to real careers
- Provides a talent pipeline for Idaho's business
- Makes education meaningful through applied learning

**The nexus between education and employment.**



It's all about your Skills.

**It's all about your Skills.**

We prepare Idaho's youth and adults for high-skill, in-demand careers.

**IDAHO**

Career & Technical  
Education



Industry + Faculty = Learning Outcomes



**Horizontal  
Alignment**



**Vertical  
Alignment**





# Programs Horizontally Aligned:

## 2015

- Administrative Services
- Auto Collision Repair
- Automotive Technology
- Computer Support
- Diesel Technology
- Precision Machining
- Programming Software Development
- Web Design Development
- Welding

## 2016

- Agribusiness
- Animal Science
- Applied Accounting
- Commercial Graphic Design
- Culinary
- Drafting Technology
- Electronics
- Hospitality Management
- Marketing
- Networking Technology
- Ornamental Horticulture
- Pre-Engineering Technology
- Residential Construction

## 2017

- Ag Small Eng- (Powersports)
- Power Sports (Sm Engine Tech)
- Environmental Science
- Plant Science
- Business Management
- Web Digital Communications
- Early Childhood Dev / Education
- Emergency Medical Technician
- Certified Nurse Assistant
- Dental Assistant
- Physical Therapy Aide / Sports Med
- Media Tech-Broadcast / Video Prod
- Media Tech-Commercial  
Photography
- Cabinetry & Millwork
- Industrial Maintenance
- Law Enforcement

We prepare Idaho's youth and adults for high-skill, in-demand careers.

**IDAHO**

Career & Technical  
Education



## Return on Investment Proposal (phase I):

**\$3.8 Million**

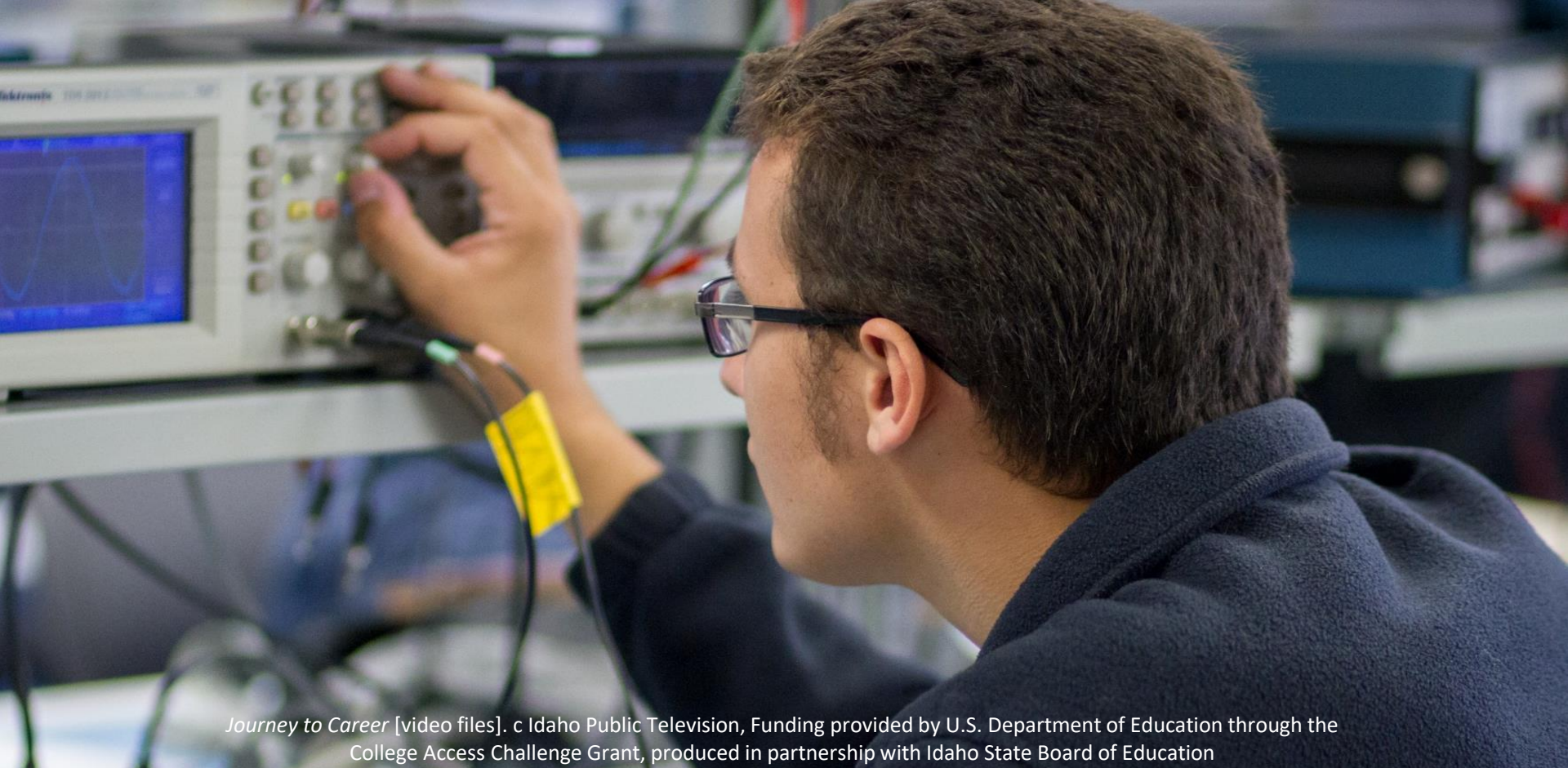
<b>30 Programs</b>	Business, Health Care, Information Tech, Manufacturing, Transportation
<b>High Demand</b>	2,200 annual job openings
<b>Current Graduates</b>	542 with 100% placement (850+ on wait lists)
<b>High Wages</b>	Starting Salaries: \$30,500 - \$72,000
<b>Appropriated</b>	\$3,791,200
<b>Projected Results</b>	248 additional graduates
<b>Actual Results</b>	<b>407</b> additional students enrolled in first year

## Return on Investment Proposal (Phase 2):

★ FY18 - \$2.4 Million

<b>16 Programs</b>	Business, Health Care, Information Tech, Manufacturing, Transportation
<b>High Demand</b>	958 annual job openings
<b>Current Graduates</b>	138 with 100% placement (141 on wait list + new programs)
<b>High Wages</b>	Starting Salaries: \$33,530 - \$78,400
<b>Request</b>	<b>\$2,400,000 (5% funding increase)</b>
<b>Projected Results</b>	<b>248 additional graduates (180% increase)</b>

★ Legislative Idea/Line-Item Request



*Journey to Career* [video files]. c Idaho Public Television, Funding provided by U.S. Department of Education through the College Access Challenge Grant, produced in partnership with Idaho State Board of Education



## The value of Career & Technical Education

- Connects students to real careers
- Provides a talent pipeline for Idaho's business
- Makes education meaningful through applied learning





## College of Western Idaho, Law Enforcement



## The value of Career & Technical Education

- Connects students to real careers
- Provides a talent pipeline for Idaho's business
- Makes education meaningful through applied learning