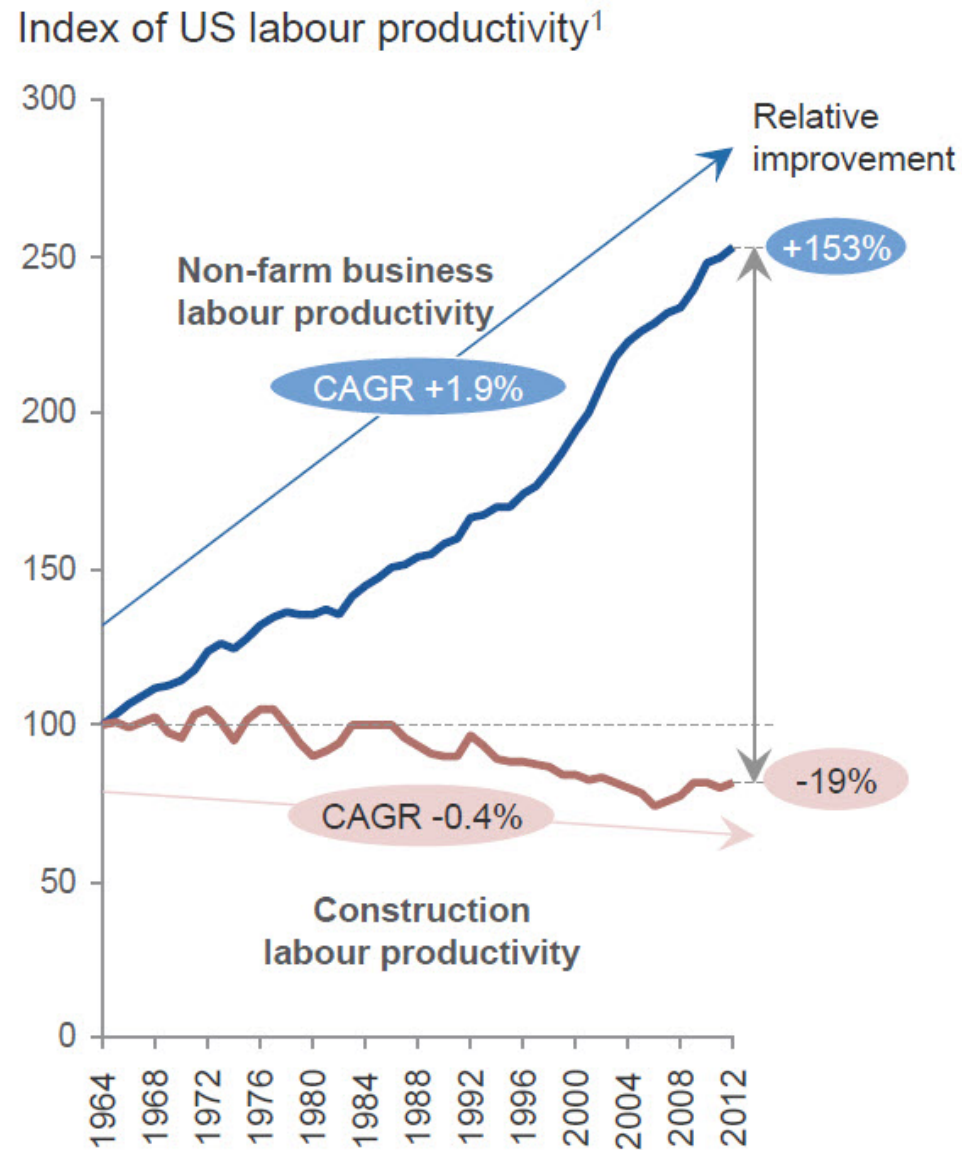




Figure 3: US Industry Productivity and Performance, 1964-2012²⁸



"Anywhere in the western world, generally the cost of labor is larger than the cost of material. So if you save time rather than material, that has a very big cost impact."

Reinier de Graaf, OMA architects

Conventional Construction

70%
labor



30%
materials

Custom Prefab

30%
labor



70%
materials













Benjamin and Mary Siddons Measey
Learning Commons





Counter 1
شماره 1



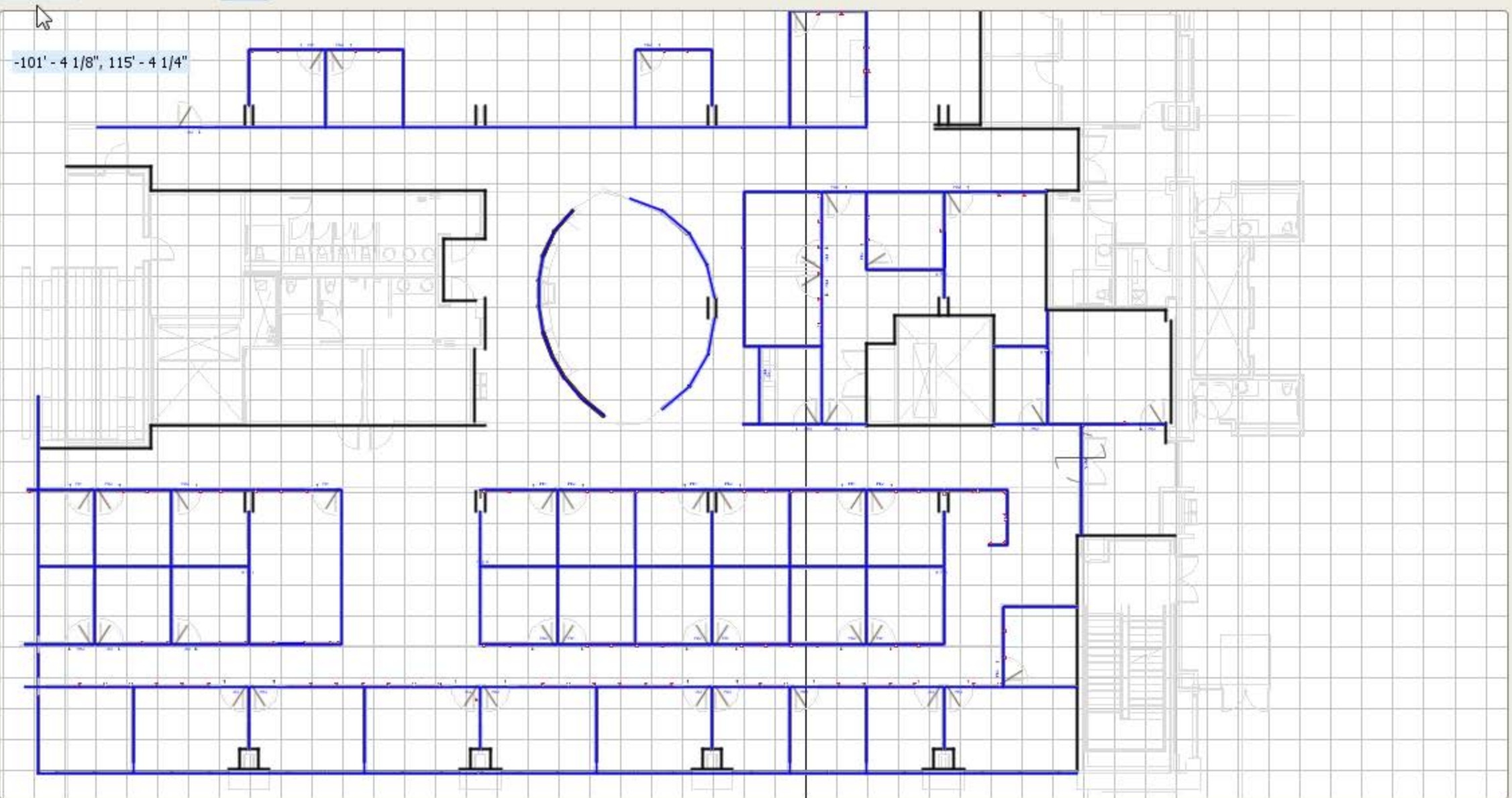
BIM with Brains

- Building Information Modeling that actually builds something
- Key is understanding all the engineering data
- Takes the repetitive auditing out of design work
- Puts the control back into the hands of the owner

- Products
- Architectural
- Fixed
- Accessories
- Tools
- Geometry
- ICERender

Stamp Draw

- Products
- DIRTT
- DIRTT Networks
- DIRTT Power
- Data Center





Veneer Grade 3 Teak Teak Quarter Cut ST10000; Quarter Cut



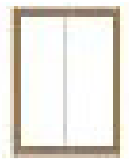
Style Name: 1 4040.71 4040.71

Center Pivot Door Glass Barivot Phat FrontDoor - Style

Description: Center Pivot Door Glass Barivot Phat

Width: 6' - 6 1/8" x Height: 9'

Quantity Price/Unit Price



Center Pivot Door Frame ()
 Astragal Retainer, Silver
 Astragal, Silver Polypile
 Anodized Finish - Clear
 Veneer Wrapped Finish
 Veneer Grade 4 Teak Teak Oiled; Quarter Cut
 Glass Wipe (for 6mm Anodized) Silver
 6mm Tempered Glass - Clear

1 417.39 417.39



Center Pivot Glass Door Barivot Phat (6' - 4" X 8' - 7 5/16" : 54.53
 sqft - \$63.68/sqft)
 Anodized Finish - Clear
 Veneer Wrapped Finish
 Veneer Grade 4 Teak Teak Oiled; Quarter Cut
 Glass Wipe (for 6mm Anodized) Silver
 6mm Tempered Glass - Clear

1 3472.50 3472.50



12" x 6" C to C Bar Pull 630 Finish ()

2 75.41 150.82

Sub-Total

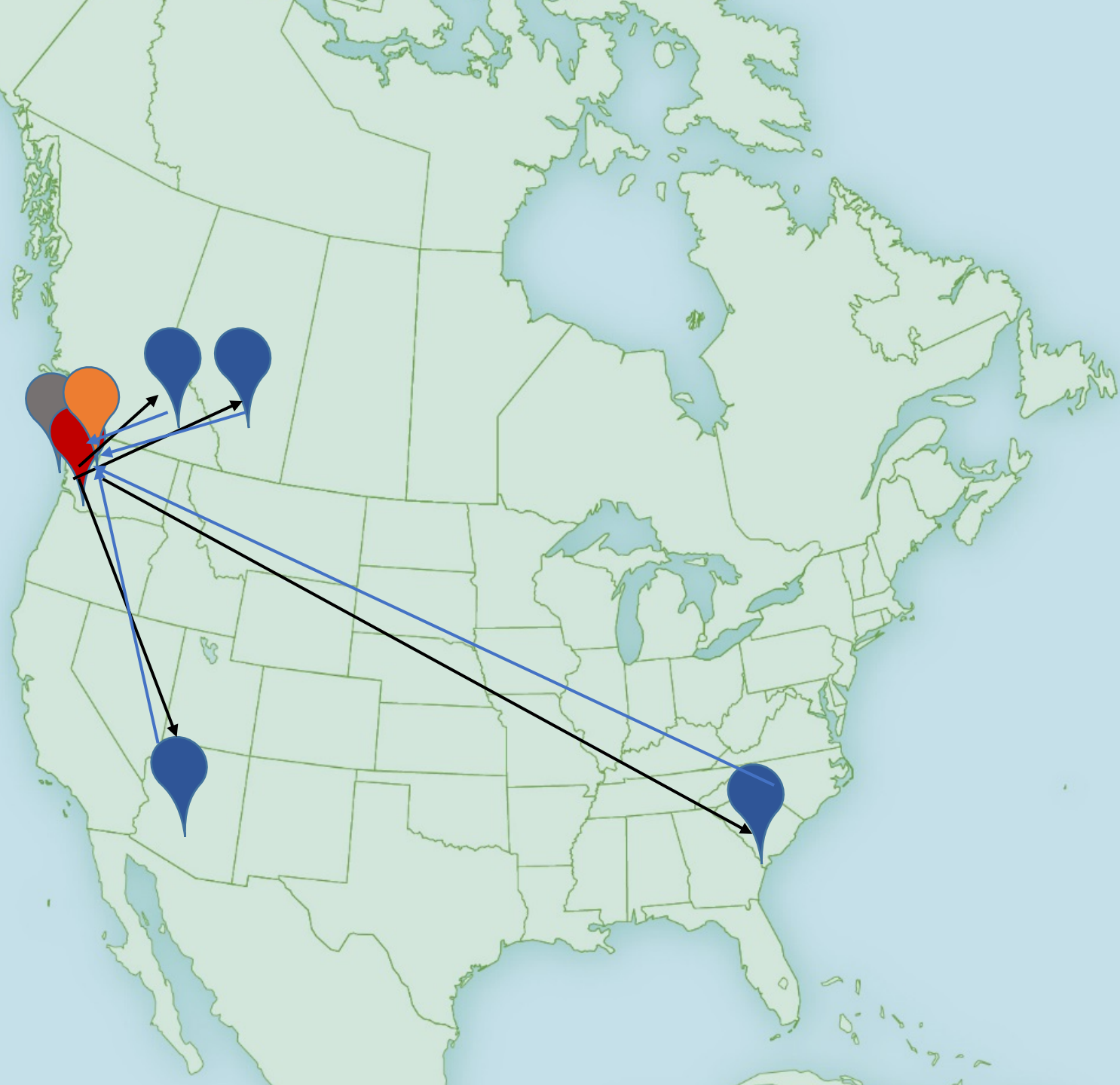
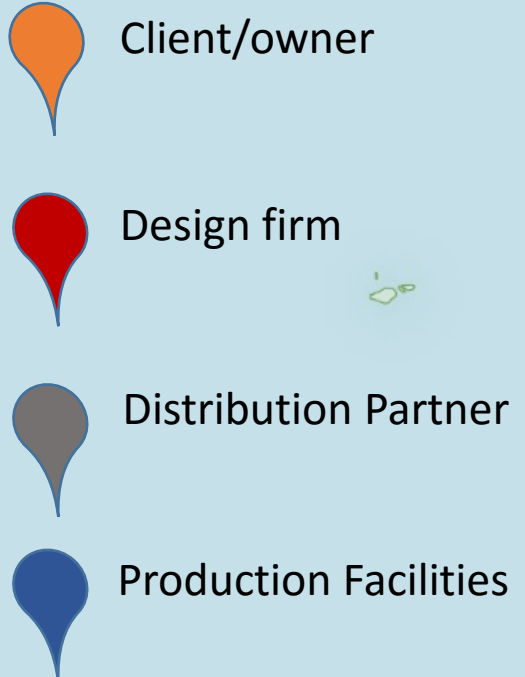


26

2

OBSERVATION
All-Port





- Local
- Certain
- Fast
- Precise
- Personal

DP LOCATIONS

- Distribution Partner
- Green Learning Center
- Ice Edge Business Solutions

Hawaii

Cayman Islands

Bermuda



Local

Certain

Fast

Precise

Personal

Technology: Making Global Local

- Puts control in the right hands
- Allows for personalized experience
- Removes 'one size fits all/none' approach
- How can you prepare?
 - New procurement and procedures
 - Look at the 'what' – not the 'how'
 - Delay tactics may not work anymore

