

FMD PREPAREDNESS FOR THE U. S. BEEF CATTLE INDUSTRY



Kathy Simmons, DVM

Chief Veterinarian

National Cattlemen's Beef Association



United States Beef Cattle Industry



- Unique and complex industry with a variety of segments.
- U.S. cattle inventory is 93.5 million head, up 1.8% from January 2016.
- 727,906 beef cattle farms and ranches in the U.S. with 91% family-owned or individually operated.
- Average beef cow herd is 40 head of cattle.
- Top 5 states that raise cattle and calves as of Jan 2017: Texas, Nebraska, Kansas, California and Oklahoma.

Is the U.S. beef cattle industry concerned about FMD, a disease with the last U.S. outbreak in 1929???

➔ YES!!



**Keep
Foot-and-Mouth
Disease
OUT
of America**

Remember to declare **any** visits to farms or contact with livestock

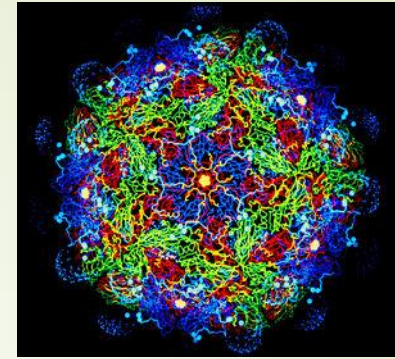
Remember to declare **all** food and agricultural items in your possession on your Customs form.

Failure to do so could result in a fine of up to \$1,000.



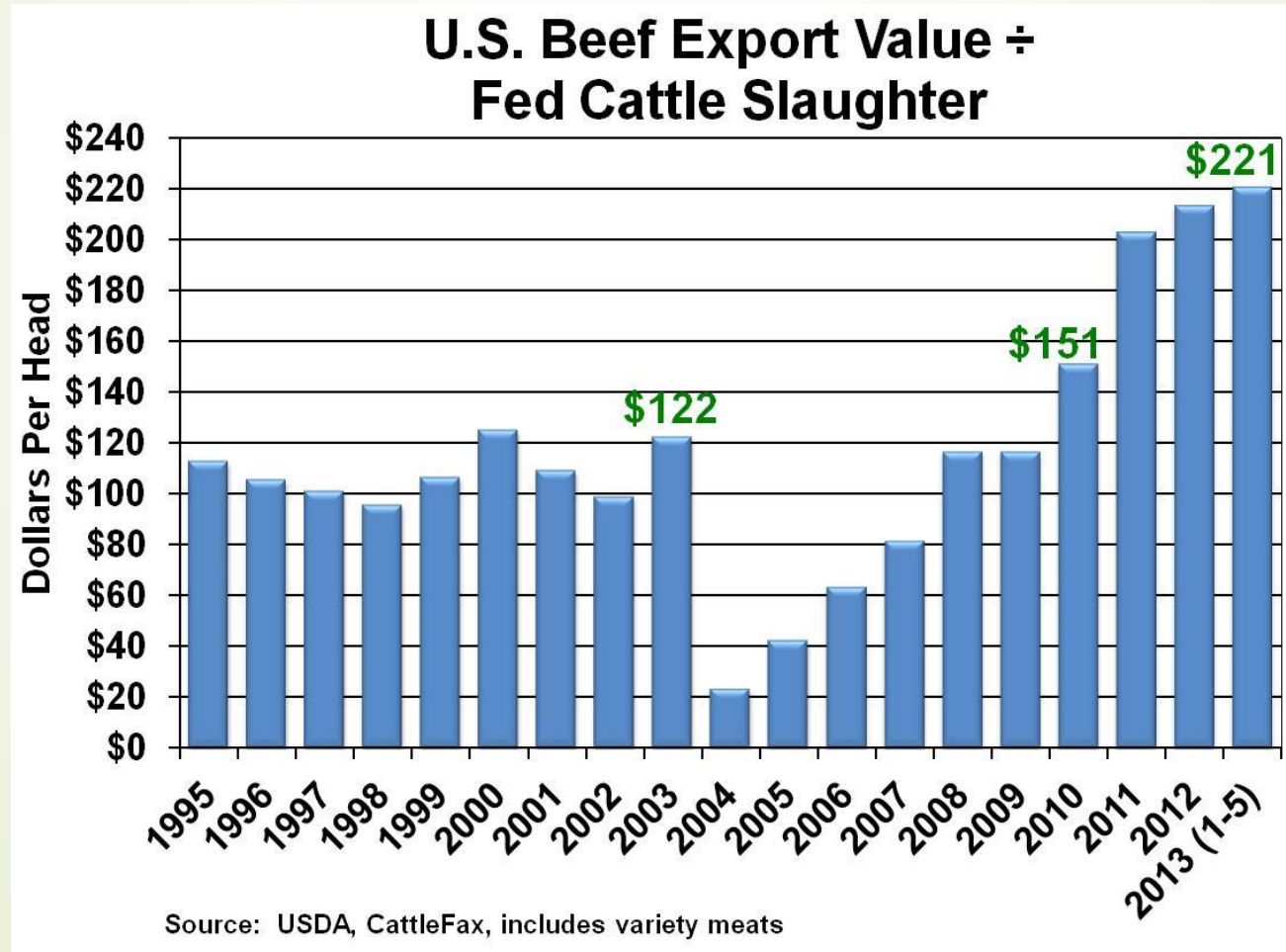
U.S. Department of Agriculture
Animal and Plant Health Inspection Service

Foot-and-Mouth Disease



- Extremely contagious viral disease of cloven-hoofed animals and some wildlife species.
- FMD is not a public health threat.
- Production losses.
- Low mortality in adults and high mortality in young animals.
- FMD outbreaks can cause severe economic costs and immediately close our export markets for animals and animal products. Export markets may be closed for indeterminate amount of time.
- Disruptions to commerce.
- Collateral markets impacted (grains, forage).
- Strained Local, State and Federal resources. Recovery time depends on the extent of the outbreak.

A single case of BSE in 2003 affected U.S. beef export markets for 8 years---FMD???



FMD Preparedness Actions Taken by the U.S. Beef Industry

- Increased Readiness Measures
- Education
- Communication



Increased Readiness Measures for FMD



- ▶ Participate in FMD drills and exercises at the state level and at regional levels.
- ▶ Participate in FMD modeling exercises with the Department of Homeland Security.
- ▶ Support a white paper with the National Pork Board and the National Milk Producers Federation written by Dr. Jim Roth on “FMD Vaccine Surge Capacity for Emergency Use in the United States”.
- ▶ Provide expert witness for Congressional Hearing on FMD Preparedness in February 2016.
- ▶ Lobby for funding for a updated FMD vaccine bank in the upcoming 2018 Farm Bill.
- ▶ Serve on the Steering Committee and work on developing a Secure Beef Supply plan.

FMD Vaccine Bank



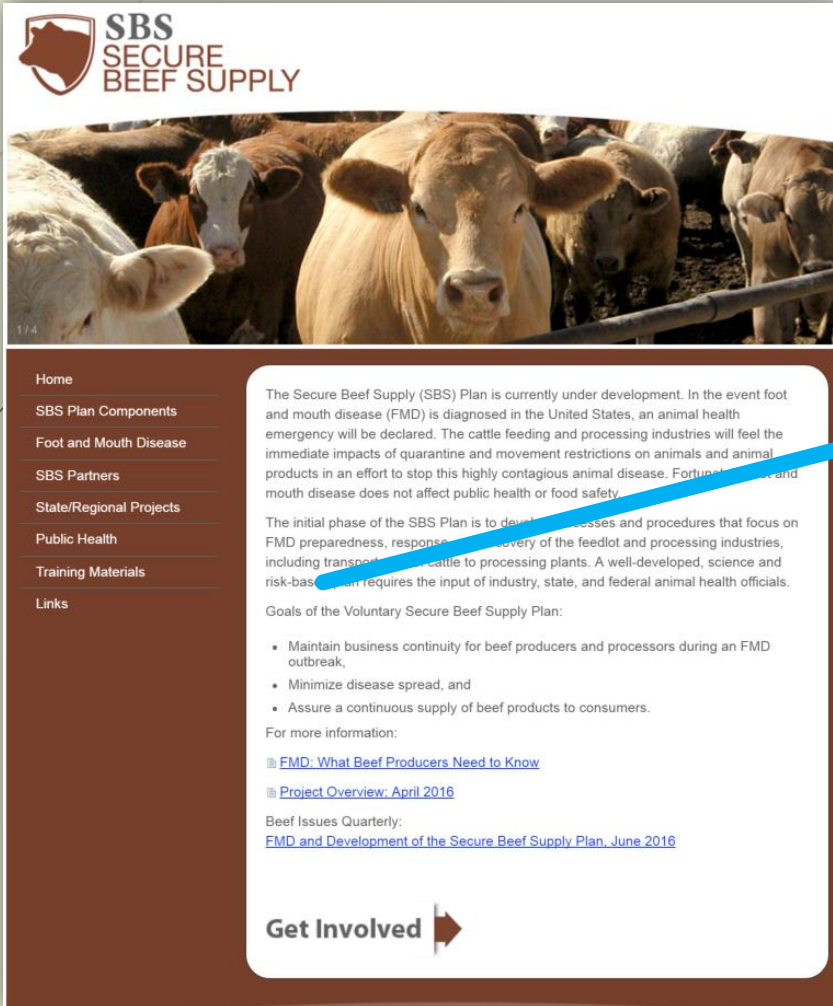
- **Current FMD vaccine bank managed by USDA-APHIS and stored on Plum Island, NY. VAC for limited number of types/subtypes of FMD virus.**
- **U.S. participates in the North American FMD Vaccine Bank with Canada and Mexico.**
- **Currently, U.S. lacks surge capacity for millions of doses of vaccine needed for a large-scale FMD outbreak in U.S. The supply is not available to implement the current USDA-APHIS policy for FMD vaccination to manage a large-scale FMD outbreak in the U.S.**
- **Request mandatory funding of \$150M annually for 5 years in the 2018 Farm bill to contract for the offshore production and stockpiling of sufficient quantities of FMD vaccine and VAC for those types/subtypes of FMD virus with the highest likelihood of entering the U.S.**




Secure Beef Supply Plan

- ▶ Functions to provide a continuity of business plan consistent with the USDA-APHIS FMD response goals in order to maintain business continuity for beef producers and processors as well as to provide a safe, continuous supply of beef for consumers.
- ▶ Voluntary participation.
- ▶ Collaboration of industry, academic, state and federal regulatory partners.
- ▶ Provides tools to protect cattle from FMD and prevent spread of FMD.
- ▶ Biosecurity principles and guidance for issuing movement permits.
- ▶ Initial focus has been on the feedyard to packer/processor segments of the beef cattle industry.

www.securebeef.org



SBS SECURE BEEF SUPPLY



174

- Home
- SBS Plan Components
- Foot and Mouth Disease
- SBS Partners
- State/Regional Projects
- Public Health
- Training Materials
- Links

The Secure Beef Supply (SBS) Plan is currently under development. In the event foot and mouth disease (FMD) is diagnosed in the United States, an animal health emergency will be declared. The cattle feeding and processing industries will feel the immediate impacts of quarantine and movement restrictions on animals and animal products in an effort to stop this highly contagious animal disease. Fortunately, foot and mouth disease does not affect public health or food safety.

The initial phase of the SBS Plan is to develop processes and procedures that focus on FMD preparedness, response, and recovery of the feedlot and processing industries, including transportation of cattle to processing plants. A well-developed, science and risk-based plan requires the input of industry, state, and federal animal health officials.


Goals of the Voluntary Secure Beef Supply Plan:

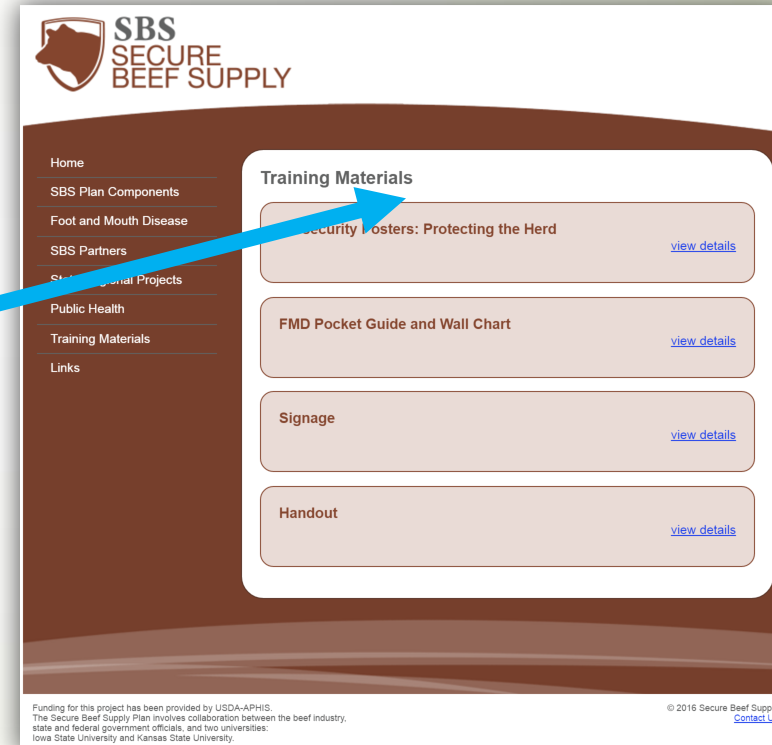
- Maintain business continuity for beef producers and processors during an FMD outbreak,
- Minimize disease spread, and
- Assure a continuous supply of beef products to consumers.

For more information:

- [FMD: What Beef Producers Need to Know](#)
- [Project Overview: April 2016](#)

Beef Issues Quarterly:
[FMD and Development of the Secure Beef Supply Plan, June 2016](#)

Get Involved 



SBS SECURE BEEF SUPPLY

- Home
- SBS Plan Components
- Foot and Mouth Disease
- SBS Partners
- State/Regional Projects
- Public Health
- Training Materials
- Links

Training Materials

- Security Posters: Protecting the Herd** [view details](#)
- FMD Pocket Guide and Wall Chart** [view details](#)
- Signage** [view details](#)
- Handout** [view details](#)

Funding for this project has been provided by USDA-APHIS. The Secure Beef Supply Plan involves collaboration between the beef industry, state and federal government officials, and two universities: Iowa State University and Kansas State University.

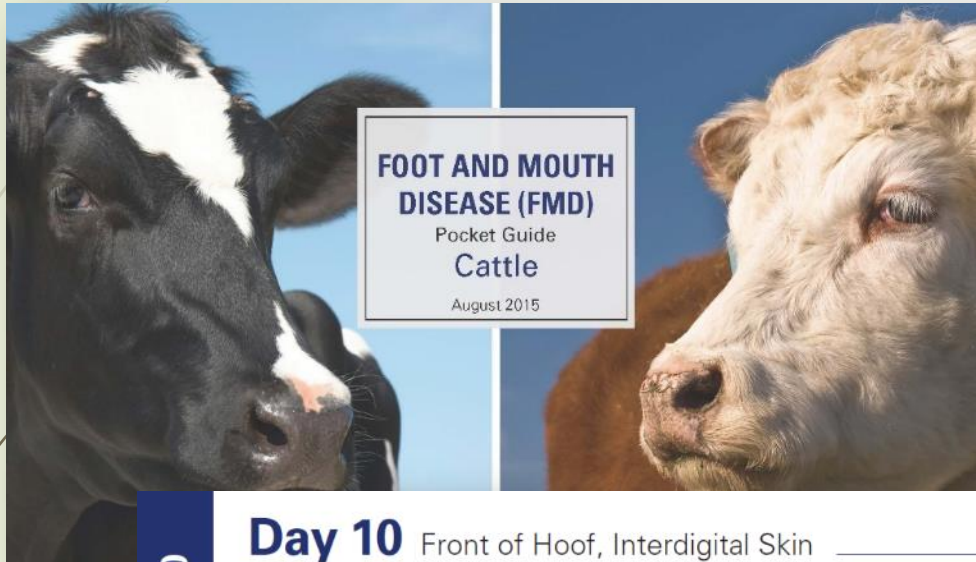
© 2016 Secure Beef Supply [Contact Us](#)

Education

- Continuing education on FMD clinical signs and biosecurity practices presented through meetings at annual conventions and conferences.
- Articles on FMD in National Cattlemen newspaper; Beef Issues Watch and Beef Quarterly publications
- FMD Pocket Guide and Posters



FMD Pocket Guide: Cattle



Day 10 Front of Hoof, Interdigital Skin

- ▲ Ruptured vesicle on interdigital skin.
- ▲ Extensive necrosis of interdigital skin with granulation tissue formation.

FIEBRE AFTOSA EN EL GANADO VACUNO
PROGRESIÓN DE LAS LESIONES

Con la subvención de las OIE y la FAO, el FMD es una enfermedad animal exótica que causa grandes pérdidas económicas y bienestar animal.

DÍAS 3, 7 Y 10 POS EXPOSICIÓN

DÍA 3
PEZUÑA
Lesiones en la punta de la pezuña.

DÍA 7
PEZUÑA
Lesiones en la punta de la pezuña.

DÍA 10
PEZUÑA
Lesiones en la punta de la pezuña.

USDA, WHO, FAO, OIE, etc.

Communications

tandmouthdiseaseinfo.org/

Tools Help

Texas Tech Red Raiders Of... Per Diem Rates gmail Email from Google Yahoo! Sports Fantasy Fo... Web Help Desk Free Clothing Donation Pi... Web Slice Galler

FootAndMouthDiseaseInfo.org

Search Go

Home About FMD Consumer Info Farmer Info Newsroom Articles Contact Us

Welcome to FootAndMouthDiseaseInfo.org

Your Source for Information About Foot-and-Mouth Disease

The United States has been free of foot-and-mouth disease (FMD) since 1929. The U.S. government and the nation's livestock producers have extensive prevention, surveillance and response measures in place to prevent the re-introduction and spread of the disease.

Foot-and-mouth disease is one of the most economically damaging animal diseases in the world and currently exists in more than 100 countries. This website is designed to help consumers, livestock producers and others learn more about FMD, including what it is, who it affects and how to protect the United State's FMD-free status.

FMD is not a public health concern and does not affect food safety. However, it is highly contagious among animals with cloven (divided) hooves, such as cattle, pigs, sheep, goats and deer. Controlling FMD, or eradicating it if an outbreak did occur, requires cooperation among those in agriculture, tourism and commerce as well as coordination among private industry groups and the government.

[Learn More about FMD](#)
[Watch a Video about FMD and Prevention](#)
[What Consumers Need to Know](#)
[What Livestock Producers Need to Know](#)
[Resources for Media](#)
[Current News and Research](#)

FMD and Prevention

Watch this [video](#) to learn more about foot-and-mouth disease.

How does FMD affect consumers?

FMD is not a public health concern but an outbreak could ultimately threaten the entire U.S. economy. Click [here](#) to find out more.

What can livestock producers do?

Being prepared and informed is essential in keeping your farm and the U.S. livestock industry free from FMD. Get more information [here](#).

Recent News

[FMD: Prepare early, respond quickly](#), July 2, 2013

[Veterinarians, public safety responders take part in drill to contain animal disease outbreak](#), Aug. 2, 2012

[Fed. panel supports Kan. biosecurity lab project](#), July 13, 2012

Thank You!

