

Oregon COVID-19 Vaccine UPDATE

Feb 17, 2021

Rex Larsen
Deputy Operations Chief
COVID-19 Vaccine Planning



Overview

- Updates on vaccines
- Overview of numbers:
 - Distribution
 - Administration
 - Allocations
- Operations Update
- Questions

Vaccine updates

EUA Approved and shipping to providers:

- Pfizer/BioNtech
- Moderna

Expected in the next few months:

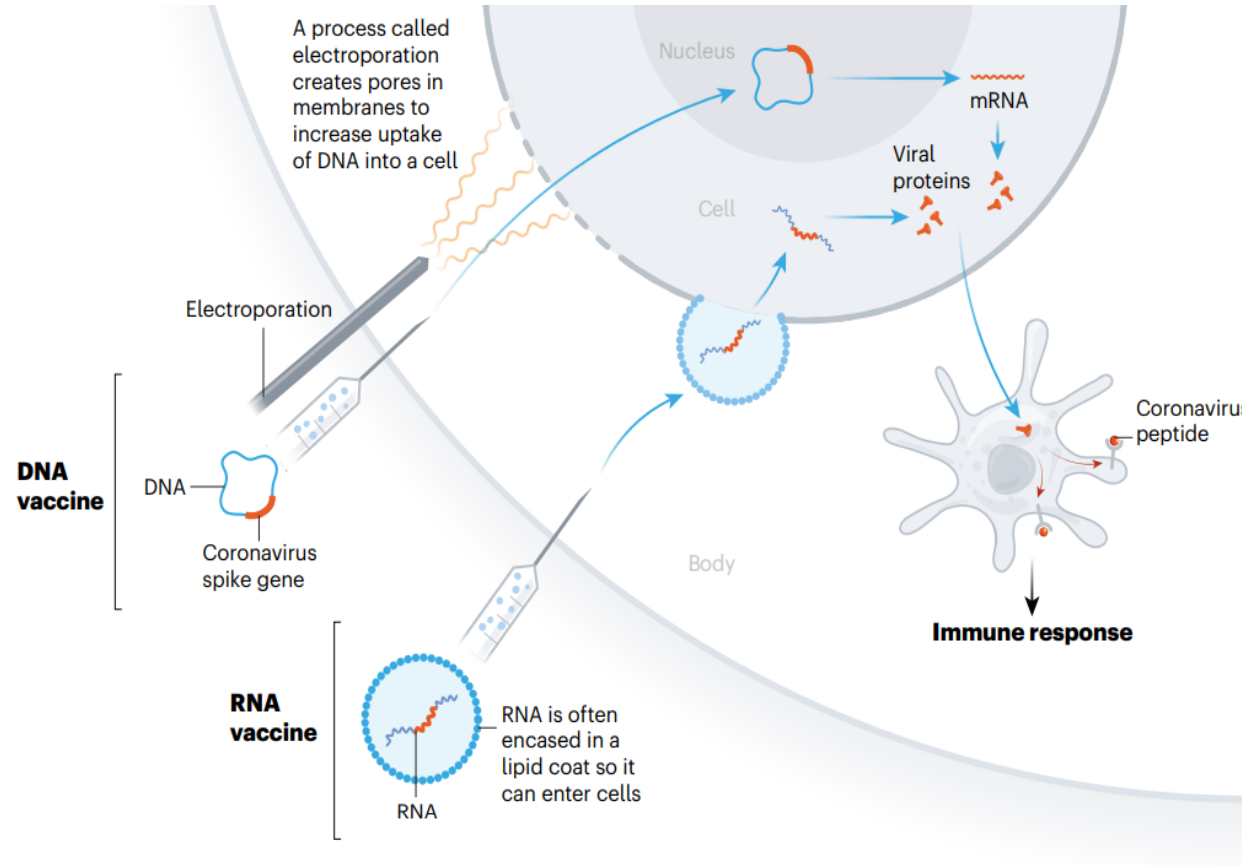
- Johnson and Johnson (March)
- AstraZeneca (April/May)

mRNA Vaccines- How do they work?

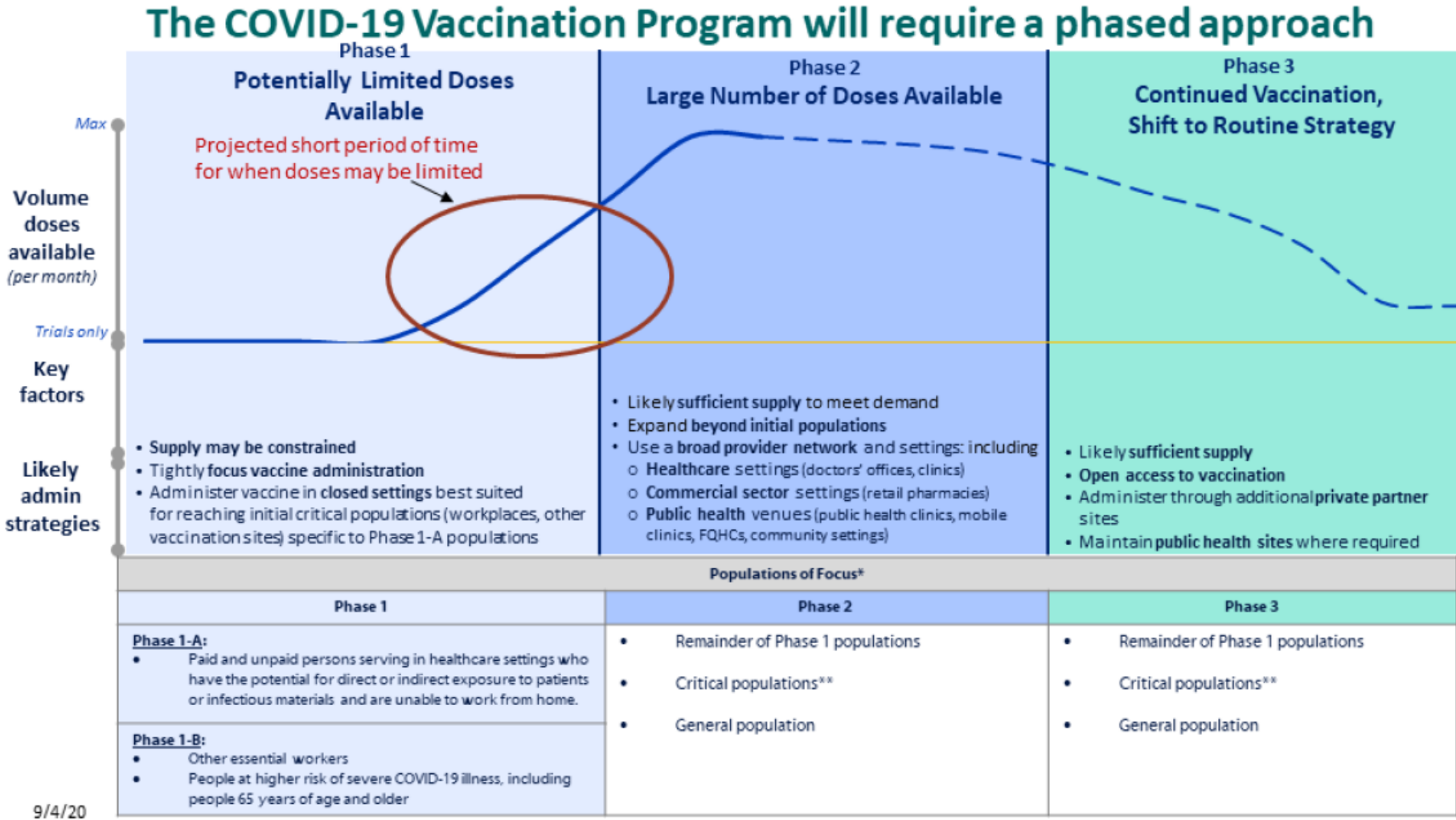
NUCLEIC-ACID VACCINES

At least 20 teams are aiming to use genetic instructions (in the form of DNA or RNA) for a coronavirus protein that prompts an immune response. The nucleic acid is inserted into human cells, which then churn out copies of the virus protein; most of these vaccines encode the virus's spike protein.

RNA- and DNA-based vaccines are safe and easy to develop: to produce them involves making genetic material only, not the virus. But they are unproven: no licensed vaccines use this technology.



Allocation and phased approach



9/4/20

Everyone in Phase 1A, Groups 1,2,3 and 4 are currently eligible for the vaccine.

Group 1

- Hospital staff with patient care responsibilities
- Urgent care
- Skilled nursing and memory care facility healthcare personnel (HCP) and residents
- Tribal health programs
- Emergency medical services (EMS) providers and other first responders
- All health care interpreters and traditional health workers in any setting within Phase 1a

Group 2

- Other long-term care facilities, including all paid and unpaid HCP, all staff and contractors, including residents who meet the age requirements of:
 - Residential care facilities
 - Adult foster care
 - Group homes for people with intellectual and developmental disabilities
 - Other similar congregate care sites
- Hospice programs
- Mobile crisis care and related services

- Individuals working in a correctional setting

Group 3

- HCPs in outpatient settings serving specific high-risk groups
- Day treatment services
- Non-emergency medical transport (NEMT)
- Paid or unpaid caregivers (including parents or foster parents) of medically fragile children or adults who live at home
- Adults and age-eligible children who have a medical condition or disability who receive services in their homes

Group 4

- All other outpatient HCPs
- Other HCP who provide direct service to people with I/DD and other high-risk populations.
- Other public health settings, such as HCP serving WIC, or CBO's with direct or indirect exposures

People eligible:
400,000 approximately

Phase 1B

Beyond Date TBD

Who's getting vaccinated in Oregon next

Group 1

- Childcare providers, early learning and K-12 educators and staff
Eligible January 25, 2021

Group 2

- People 80 and older
Eligible February 8, 2021

Group 3

- People 75 and older
Eligibility date to be determined

Group 4

- People 70 and older
Eligibility date to be determined

Group 5

- People 65 and older
Eligibility date to be determined

Educators:
105,000* approximately
People over 65:
795,000* approximately

Subsequent groups will be determined in coordination with the Vaccine Advisory Committee and shared on OHA's COVID-19 vaccine web page. These are examples of groups of people who may included:

- Critical workers in high-risk settings — workers who are in industries essential to the functioning of society and substantially higher risk of exposure
- People of all ages with underlying conditions that put them at moderately higher risk
- People in prisons, jails, detention centers, and similar facilities, and staff who work in such settings
- General population

* Oregon's vaccine supply is limited. It is estimated to take 12-15 weeks to vaccinate groups 1-5 of Phase 1B.

Overview of Numbers

Deliveries
through
2/16/21

	Pfizer	Moderna	Total
Total state allocated through 2/16/21	330,525	417,500	748,025
Total LTCF PP through 2/16/21	117,975	0	117,975
Total Federal Retail Pharmacy through 2/16/21	0	12,600	12,600
Total non-pharmacy Federal through 2/16/21	23,400	20,300	43,700
Cumulative doses delivered to all Oregon sites through 2/16/21	471,900	450,400	922,300

Doses administered through 2/16/21

	Pfizer	Moderna	Unknown ⁴	Total
Doses administered on 2/16/21³	5,600	5,051	2	10,653
First doses	3,579	1,692	1	5,272
Second doses	2,016	3,349	1	5,366
Unknown/Invalid dose number	5	10	0	15
Total doses administered through 2/16/21³	373,808	332,779	657	707,244
First doses	245,061	253,867	585	499,513
Second doses	128,181	78,049	70	206,300
Unknown/Invalid dose number	566	863	2	1,431

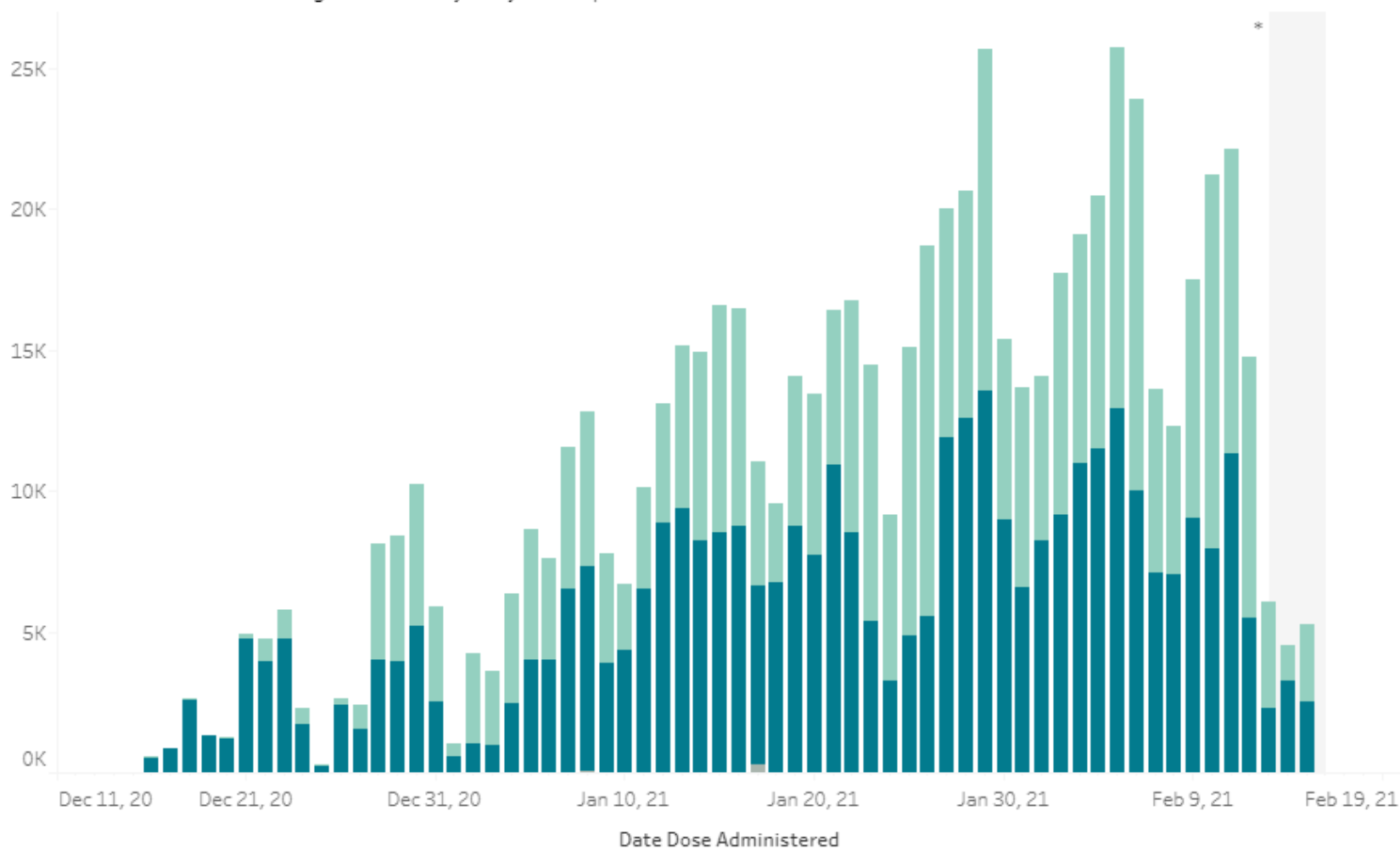
Doses
administered
through
2/16/21

Date of administration	Total Doses
Sunday, 2/7/2021	13,602
Monday, 2/8/2021	12,317
Tuesday, 2/9/2021	17,620
Wednesday, 2/10/2021	21,815
Thursday, 2/11/2021	22,535
Friday, 2/12/2021	15,743
Saturday, 2/13/2021	6,203
<i>7-day running average</i>	<i>15,691</i>
<i>Sunday, 2/14/2021</i>	<i>4,892</i>
<i>Monday, 2/15/2021</i>	<i>7,474</i>
<i>Tuesday, 2/16/2021</i>	<i>10,653</i>

Oregon's Vaccination Trend: Doses Administered by Day

This chart shows the total number of COVID-19 vaccine doses that have been given in Oregon by day and manufacturer.

*Doses administered during this time may not yet be reported.



Doses Administered
 **The number of doses administered and people vaccinated may not match. Please see below for more detail.

367,164 Pfizer doses

323,642 Moderna doses

646 Unspecified

691,452 Total Doses Administered

****People Vaccinated**

288,375 Series In Progress

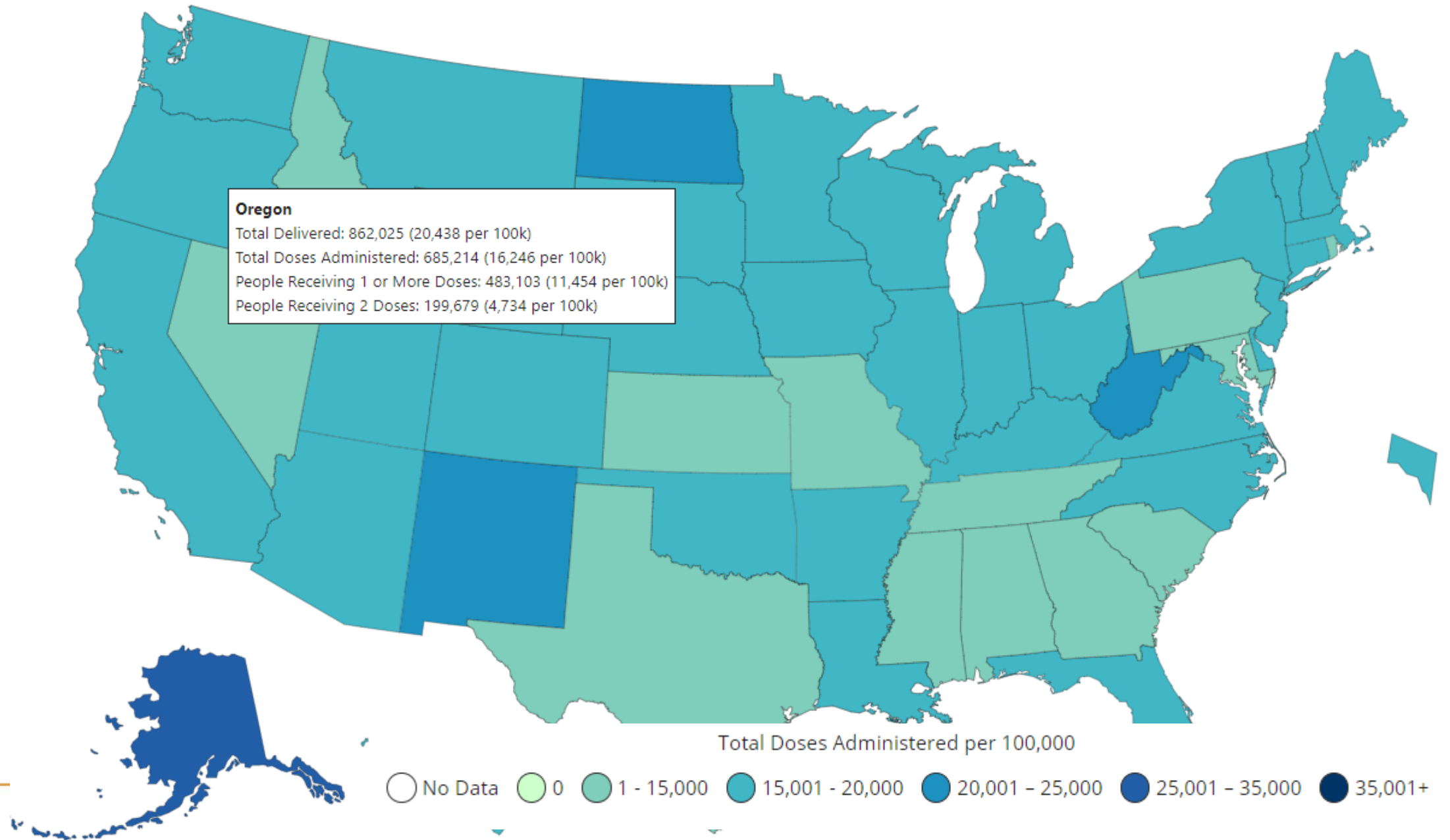
198,898 Fully Vaccinated

487,273 Total People



Total Doses Administered Reported to the CDC by State/Territory and for Selected Federal Entities per 100,000

As of Feb 16



Operations Updates

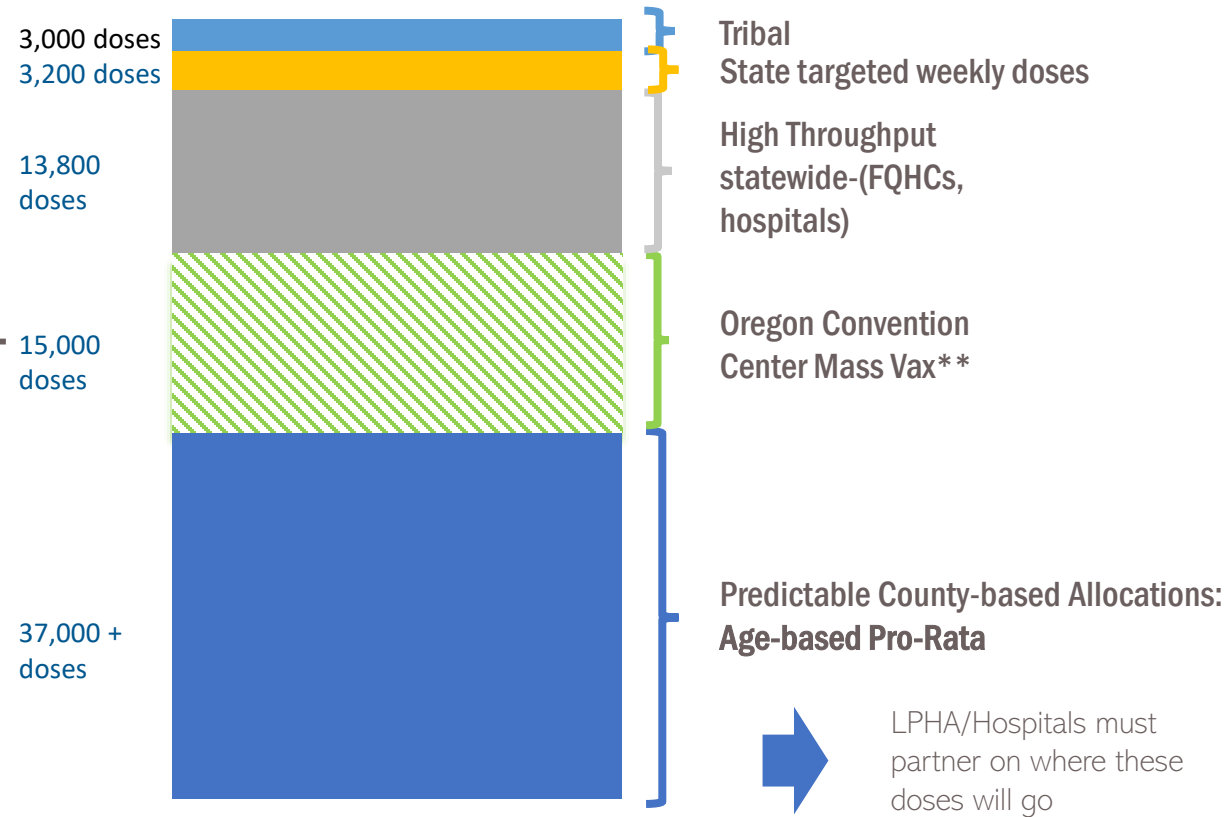
Change and flexibility

- Many changes week to week to Oregon's allocation plans and paradigms.
 - Oregon will be transitioning to a pro rata allocation system for 65+ populations from a throughput focused model
- Increasing flexibility for administration and focusing on throughput and ensuring no wasted doses.

Strategies for consistent vaccine allocation across Oregon

1. Adding FQHCs as a direct vaccine provider (targeting 9 FQHCs)
2. Direct the new Federal retail pharmacy to allocate first to pharmacies in census tracts that have the highest Social Vulnerability Index score (12,000 Federal doses to allocate)
3. Provide direct allocations to FEMA/hospital based mass vax sites
4. Consistent pro-rata county by county allocation based on percent of 65+ in their county—work with LPHA/hospitals where that vaccine should be sent

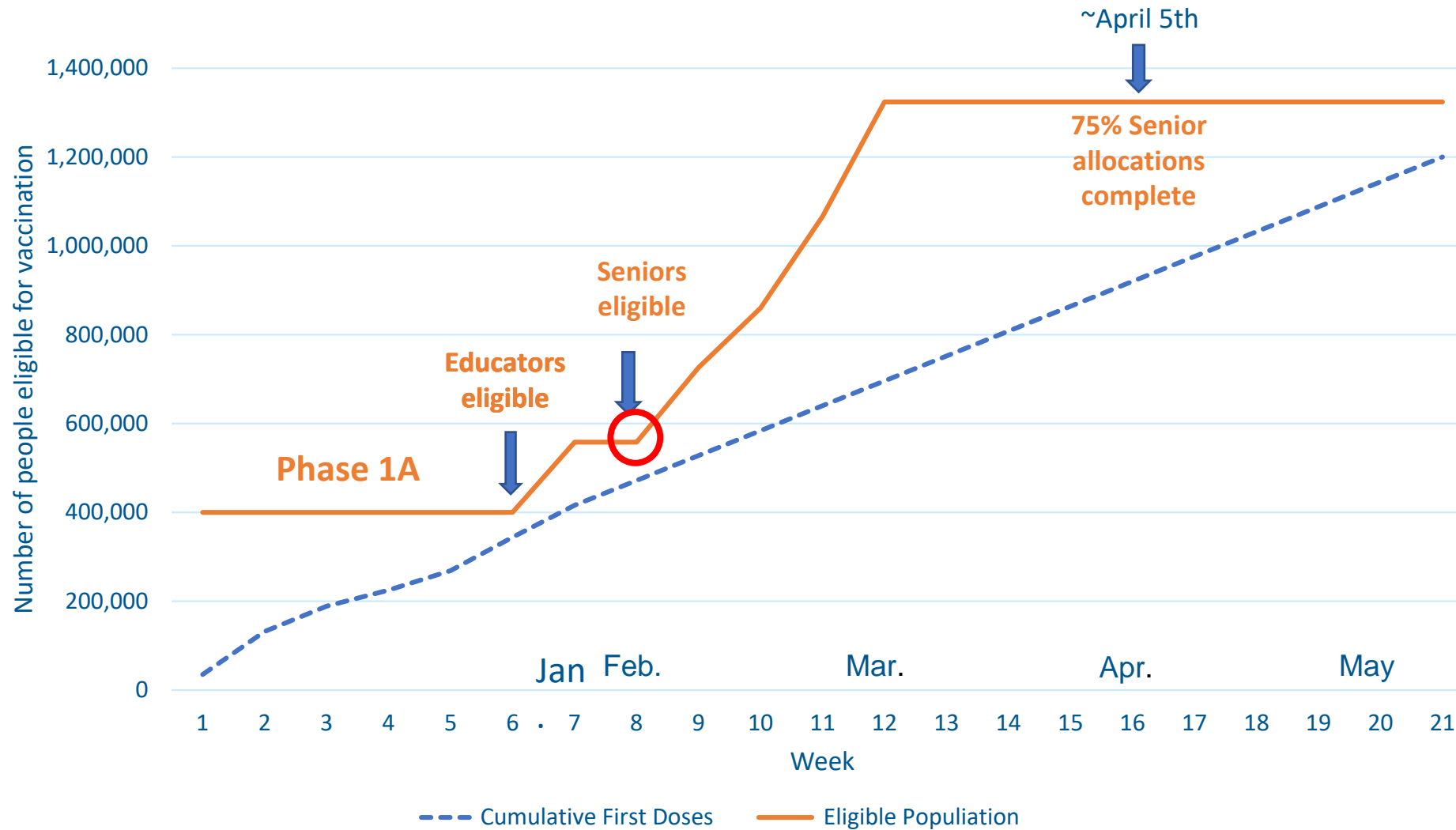
Predictable Allocation Plan + Equity Focus



**Note-OCC doses come from Tri-county allocation

Predicted Highest Level Forecast

First Dose Supply vs. Eligible Doses



Ensuring everyone can access vaccine

- Oregon Health Authority Vaccine Information Tool
- Get Vaccinated Oregon tool
- Vaccine event information by county
- 211 info call-in sign-up process
 - Call center now staffed with additional national guard staff to ensure adequate capacity
 - Serves people unable to access the website or requiring other assistance

Lessons learned

- States cannot rely on flu season infrastructure to meet COVID vaccination demands
- Unique communication channels are needed to ensure that people have access to information and actions that they can take themselves
- Providers need more support with COVID vaccine than other vaccination programs
- This effort requires more staff and resources than nearly all states estimated at the outset

Questions and Discussion