

# Idaho Invasive Species Program



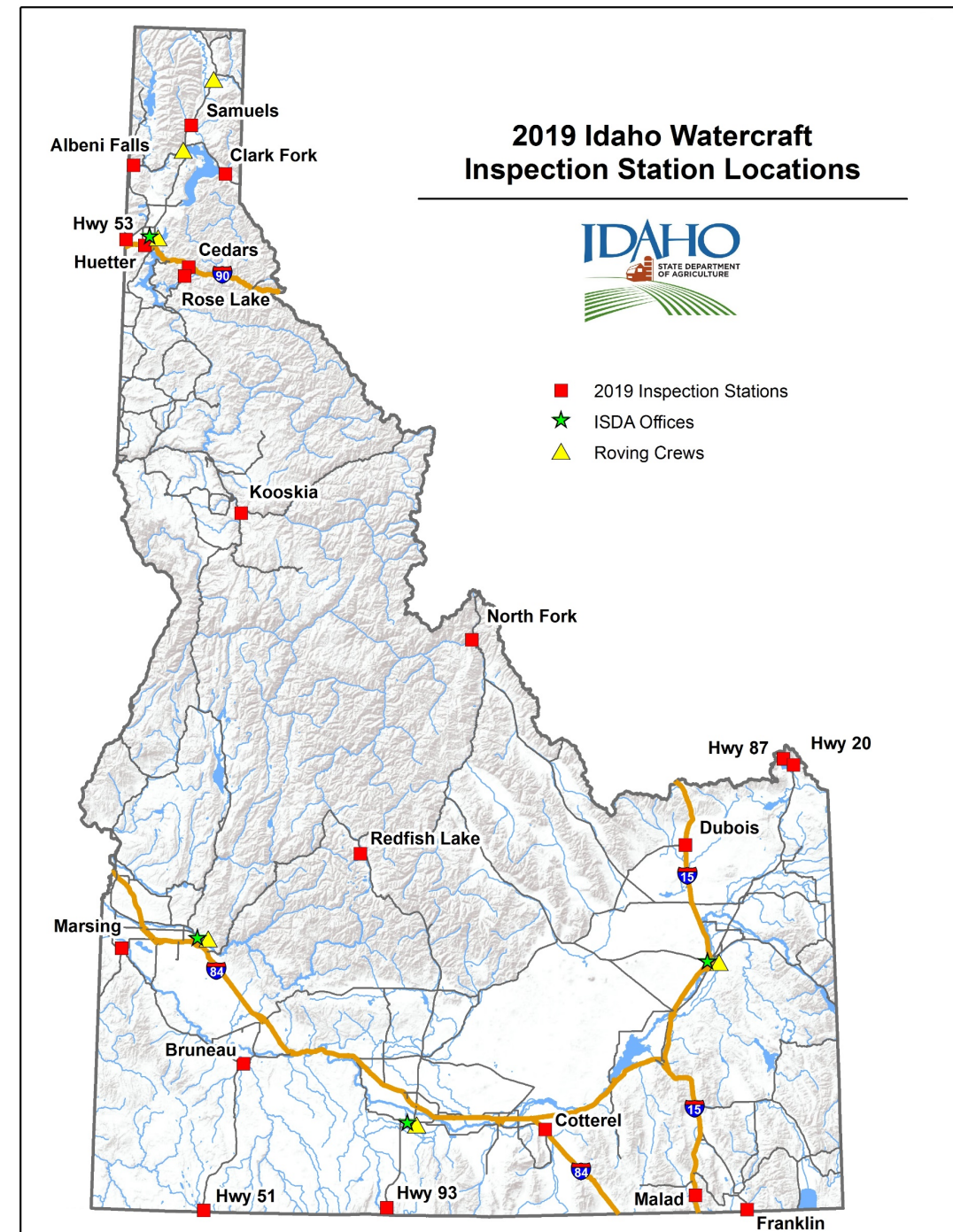
# Invasive Species Program Areas

- Prevention
  - Watercraft Inspection
- Early Detection Monitoring
  - Plankton tow
  - Adult surveys
- Management and Control
  - Active control programs
  - Rapid response
- Education and Outreach
  - Public campaigns
  - Partnerships



# 2019 Inspection Station

- **11<sup>th</sup>** Year of the inspection program
  - 110,000 in 2018, over 600,000 over 10 years
- **20** Inspection stations
  - 19 Cooperator stations
- **6** Roving inspection crews
- Extended season duration
- Extended night operations
  - 18 Hour (6AM-midnight)
    - Malad (I-15 N), Cedars (I-90W), Jackpot (HWY 93 N)
  - 24 Hour
    - Cotterell (I-84W)
- Law enforcement support
  - Local County
  - Idaho State Police

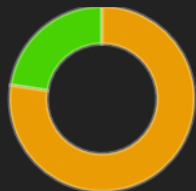


# 2019 Idaho Aquatic Invasive Species Inspection Stations

Filter By Station All Stations

Filter by Date All Dates

## Plant Type Found on Watercraft



Aquatic Plant 77% Terrestrial Plant 23%

## Returned By The Law

# 1,306

## From Infested Water

# 1,658

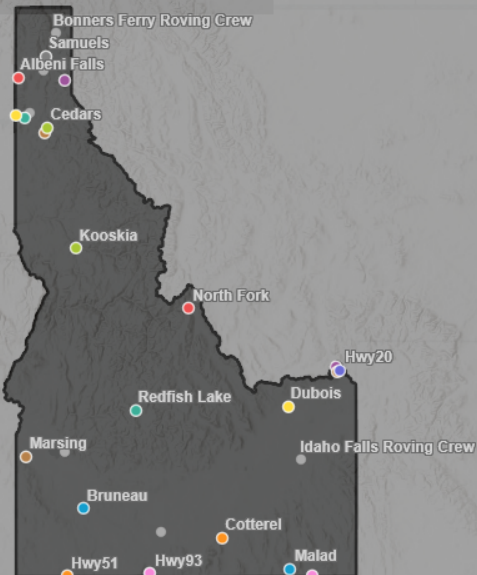
## Total Hotwashed Watercraft

# 3,172

## Total Watercraft Inspected

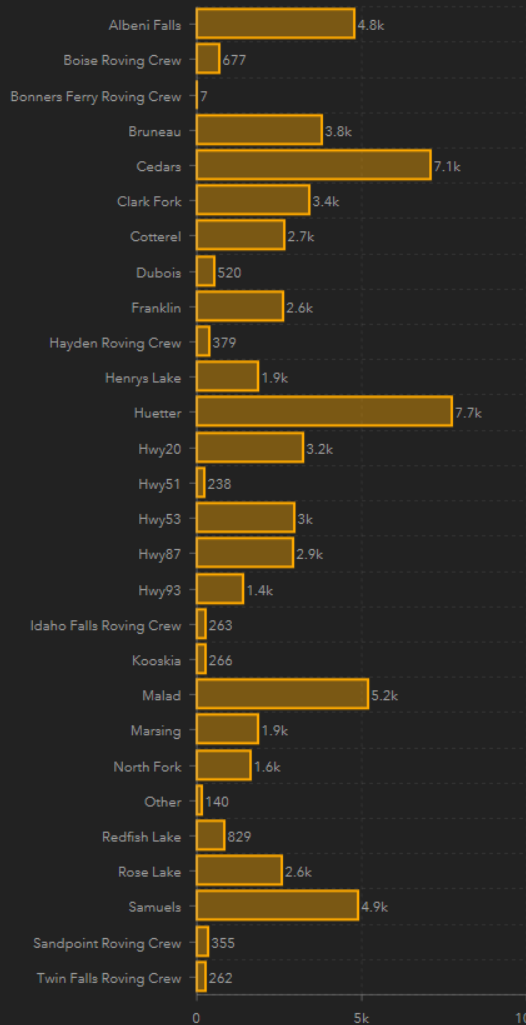
# 64,503

Last update: a few seconds ago



Esri, HERE, Garmin, FAO, NOAA, USGS,...

## Inspections by Station



## Inspections From Fouled Waters

Inspection Station = Cotterel  
 Date and Time = 7/19/2019, 1:18 PM  
 Watercraft Type = Jet Ski  
 Days in Water = 5  
 Days out of Water = 1  
 Name of Waterbody = POWELL LAKE Utah  
 Destination State = Washington

Inspection Station = Cotterel  
 Date and Time = 7/19/2019, 1:14 PM  
 Watercraft Type = Jet Ski  
 Days in Water = 4  
 Days out of Water = 1  
 Name of Waterbody = POWELL LAKE Utah  
 Destination State = Washington

Inspection Station = Cotterel  
 Date and Time = 7/19/2019, 12:45 PM  
 Watercraft Type = Ski Boat  
 Days in Water = 3  
 Days out of Water = 24  
 Name of Waterbody = POWELL LAKE Utah  
 Destination State = Idaho

Inspection Station = Dubois  
 Date and Time = 7/19/2019, 12:43 PM  
 Watercraft Type = Jet Boat  
 Days in Water = 1  
 Days out of Water = 1  
 Name of Waterbody = CANYON FERRY LAKE Montana  
 Destination State = Utah

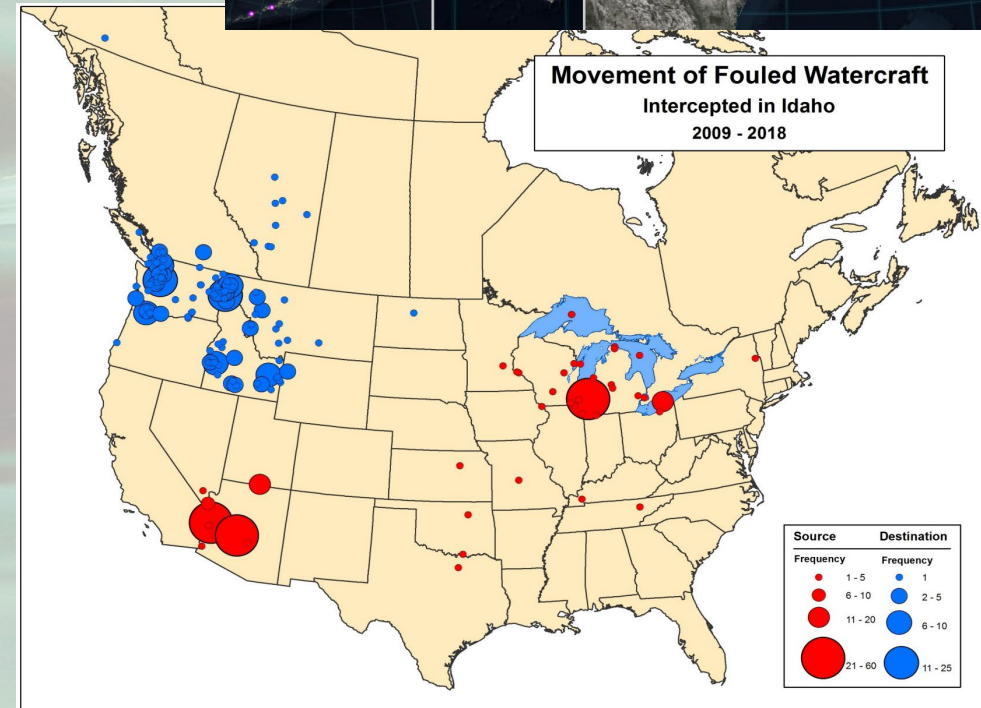
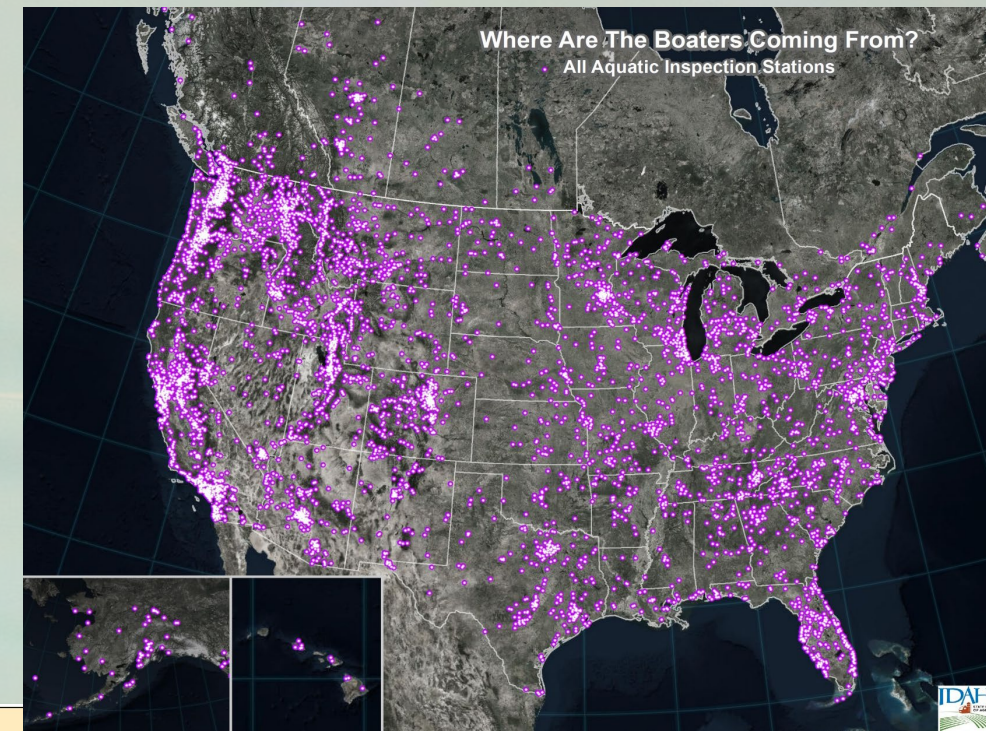
Inspection Station = Malad  
 Date and Time = 7/19/2019, 11:23 AM  
 Watercraft Type = Race Boat  
 Days in Water = 1  
 Days out of Water = 2  
 Name of Waterbody = HAVASU LAKE Arizona  
 Destination State = Idaho

Inspection Station = Hwy93  
 Date and Time = 7/19/2019, 10:55 AM  
 Watercraft Type = Inflatable Raft  
 Days in Water = 1  
 Days out of Water = 250  
 Name of Waterbody = "COLORADO RIVER, PARKER" Arizona  
 Destination State = Idaho

Inspection Station = Malad  
 Date and Time = 7/19/2019, 9:59 AM  
 Watercraft Type = Kayak

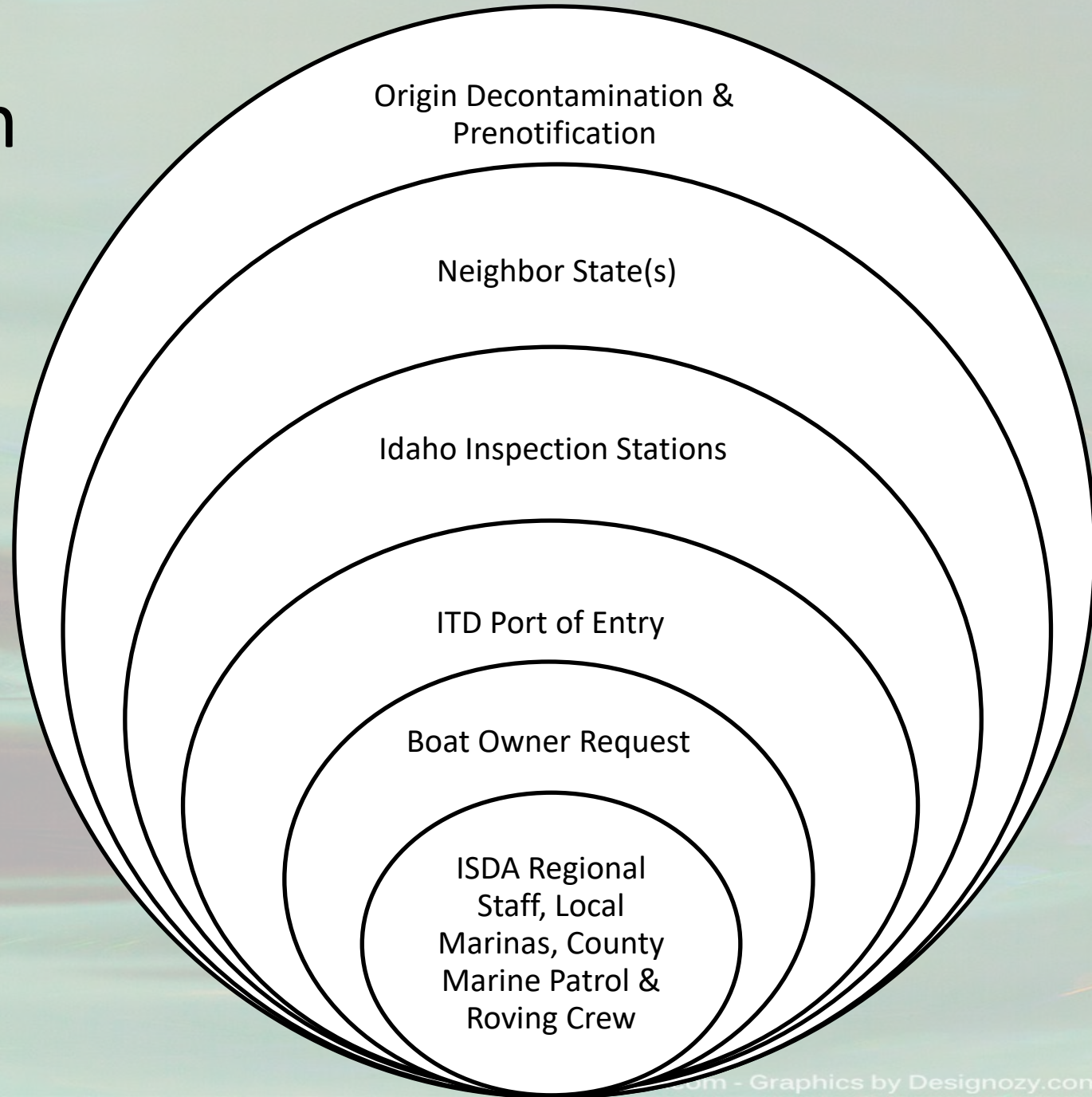
# Inspection Data

- Each station is unique
  - Boating traffic, demographic and timing can vary greatly from one station to another
- Where are you from? Combined 2018 zipcode (PURPLE)
- What was the last waterbody visited in previous 30 days? 2009-2018 fouled watercraft origin (RED)
- Where is your destination? 2009-2018 fouled watercraft destination (BLUE)



# Watercraft Inspection in the West

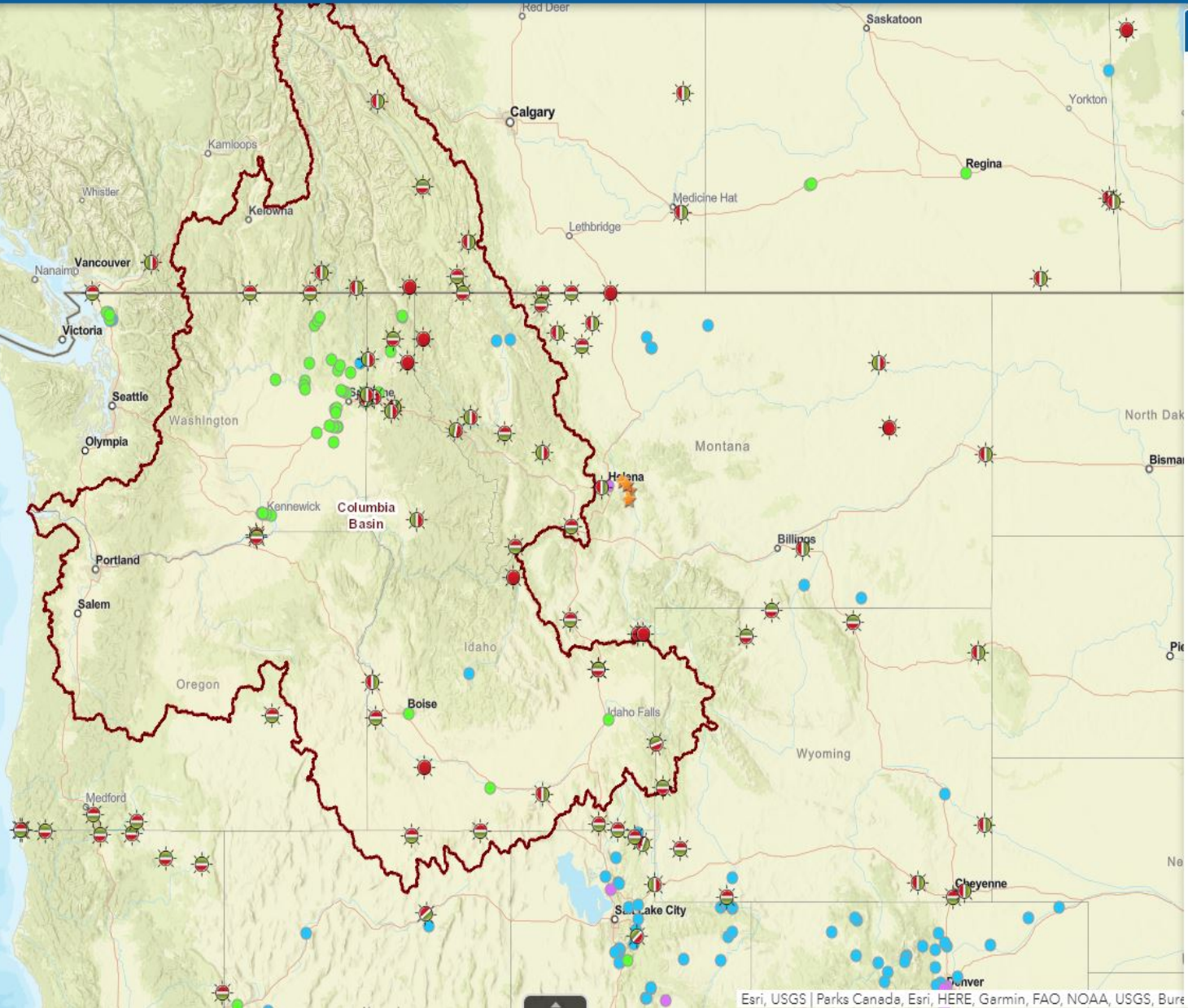
- Several “nets” provide coverage for Idaho and Columbia River Basin
- Minimum standards- UMPS III
- Regional networking continues to improve
  - State partners
  - Regional Database
  - Transportation permits
- Information passed on to inspection station(s) & managers





Find address or place

100mi  
-122.737 39.434 Degrees



Legend

Highway Watercraft Inspection Stations (public view)

- Highway station (single direction)
- Highway station (both directions)
- Highway station (directionality not established)

Waterbody and Source Watercraft Inspection Stations (public view)

- Waterbody station
- Roving
- Source Decontamination Station
- Office location

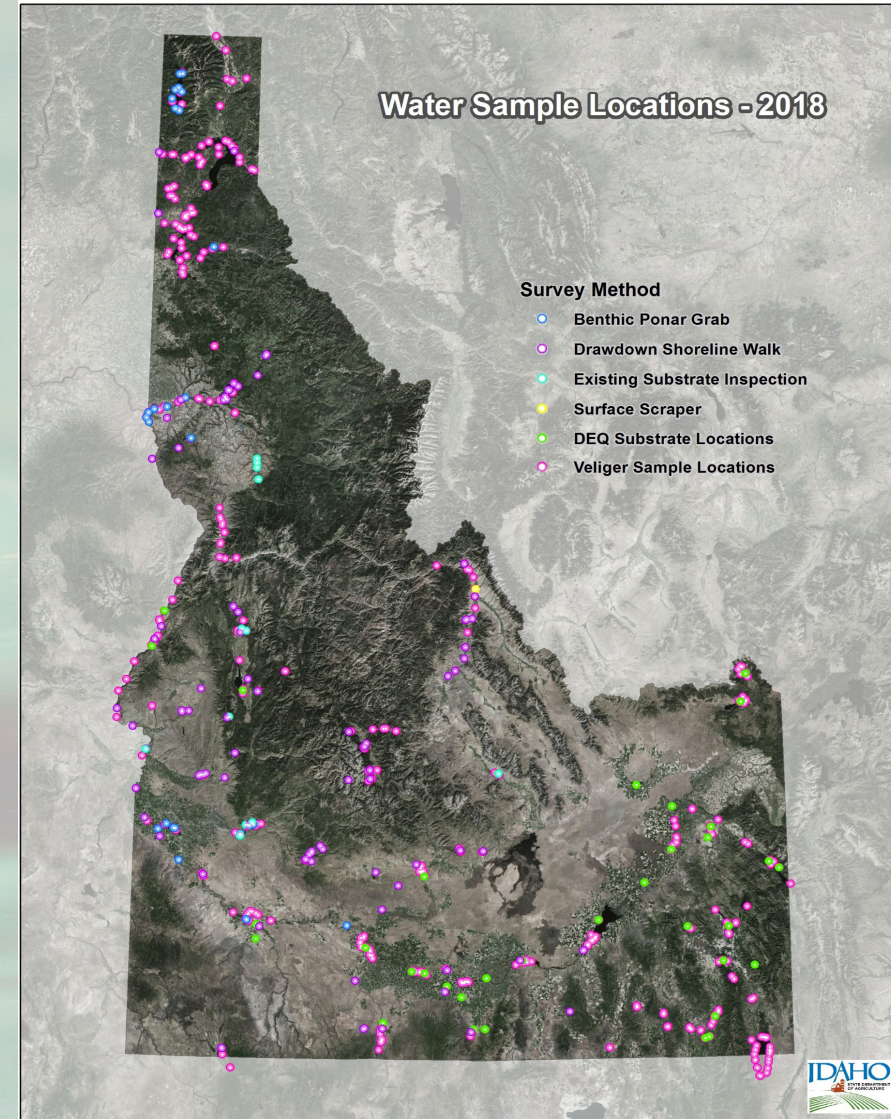
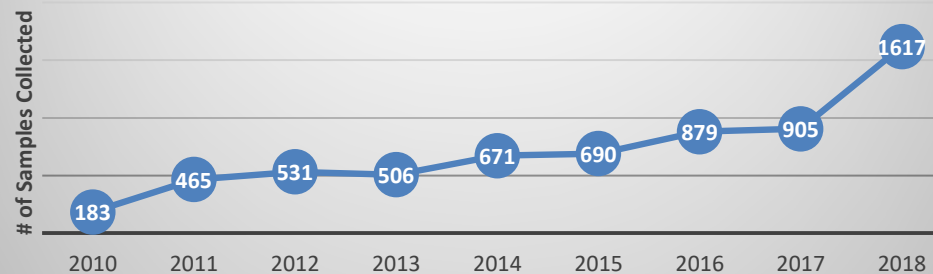
Columbia Basin Watershed Boundary

- Columbia Basin Boundary

# 2019 Early Detection Monitoring

- 10<sup>th</sup> year of monitoring in Idaho
- No detections in Idaho!
- Veliger Monitoring (microscopy)
  - **1600** sample goal (2018- **1617** plankton samples collected from **80** waterbodies)
    - Multiple sample events, bi-weekly, per waterbody
    - Priority overnight shipment
    - 2 week turnaround for lab analysis
- Adult Monitoring (visual)
  - Reservoir drawdown, substrate and benthic grab sampling

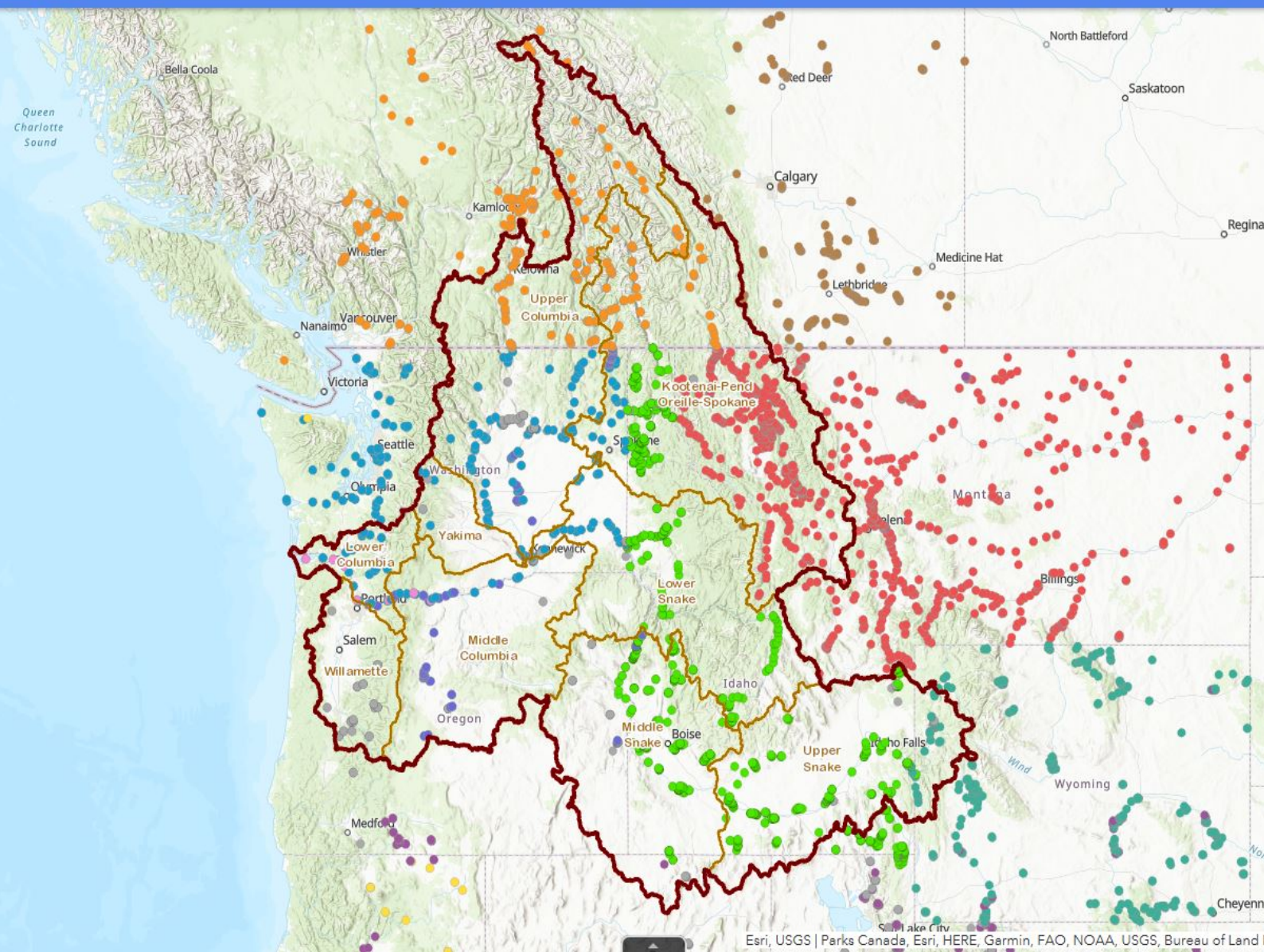
Plankton Tow Monitoring for Dreissenid Veliger Analysis ISDA 2009-2018







Find address or place



Legend

Columbia Basin Watersheds (WBD)

- Columbia Basin Boundary
- 2nd Level HUC (Subregion)

Quagga/Zebra Mussel Monitoring Sites (all 2018)

By Data Source

- MFWP
- WDFW
- IDA
- BOR WEST
- ECCS
- CDFW
- WSU
- AEP
- WGFD
- PSU
- Other

100mi  
-134.188 52.653 Degrees