



# Alaska Tanker Company

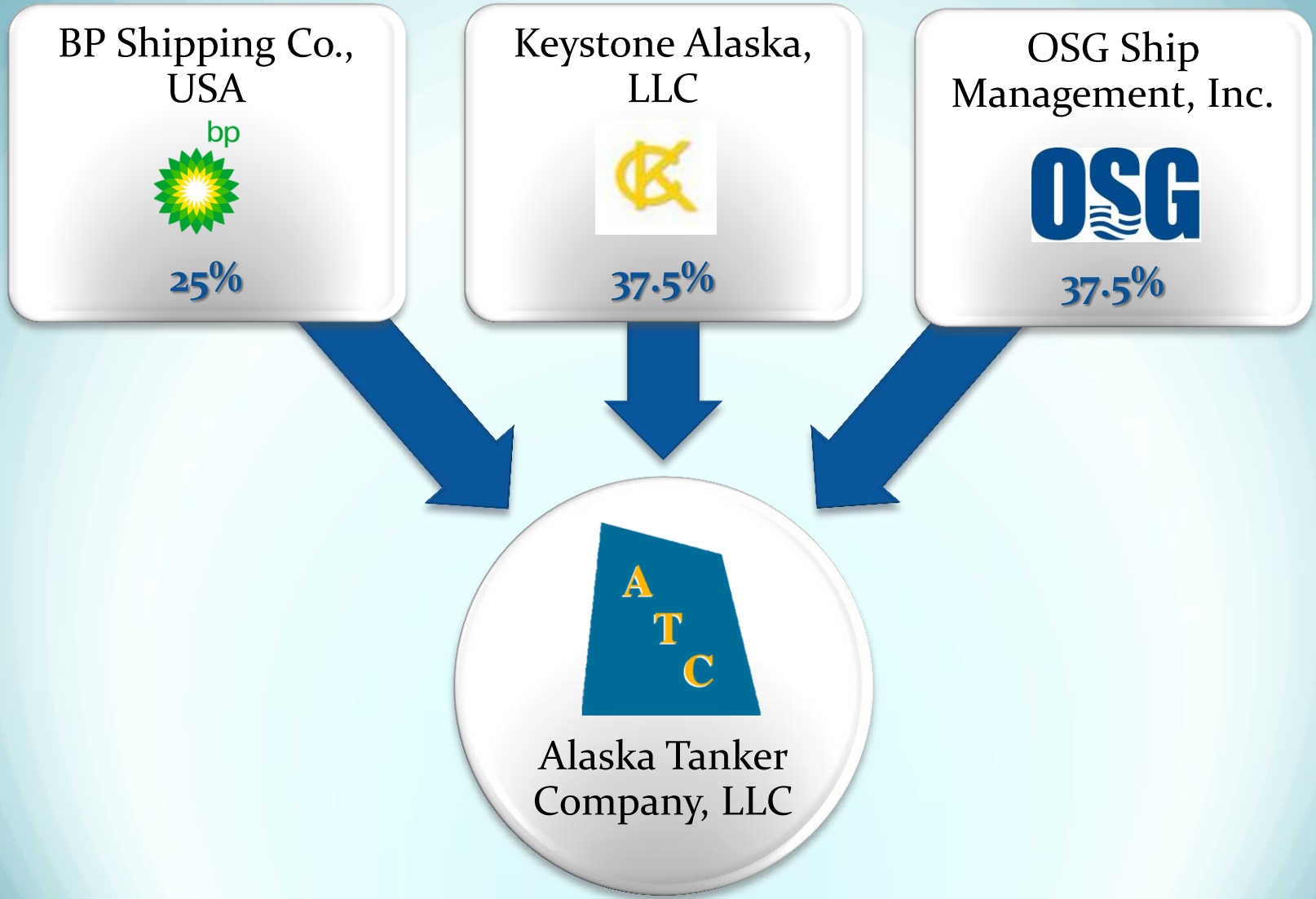
**PNWER Annual Summit**

**Transportation Session**

**July 25, 2017**



# Company Ownership

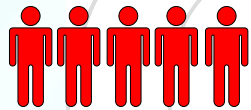




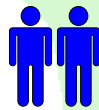
# ATC's Business: Transporting Alaska North Slope (ANS) Crude Oil

- ATC carries approximately one-third of Alaska's North Slope production
- One in ten barrels of crude oil brought into Washington State and California are on ATC ships

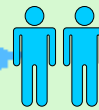
## • Our Workforce:



**SIU**



**MEBA**



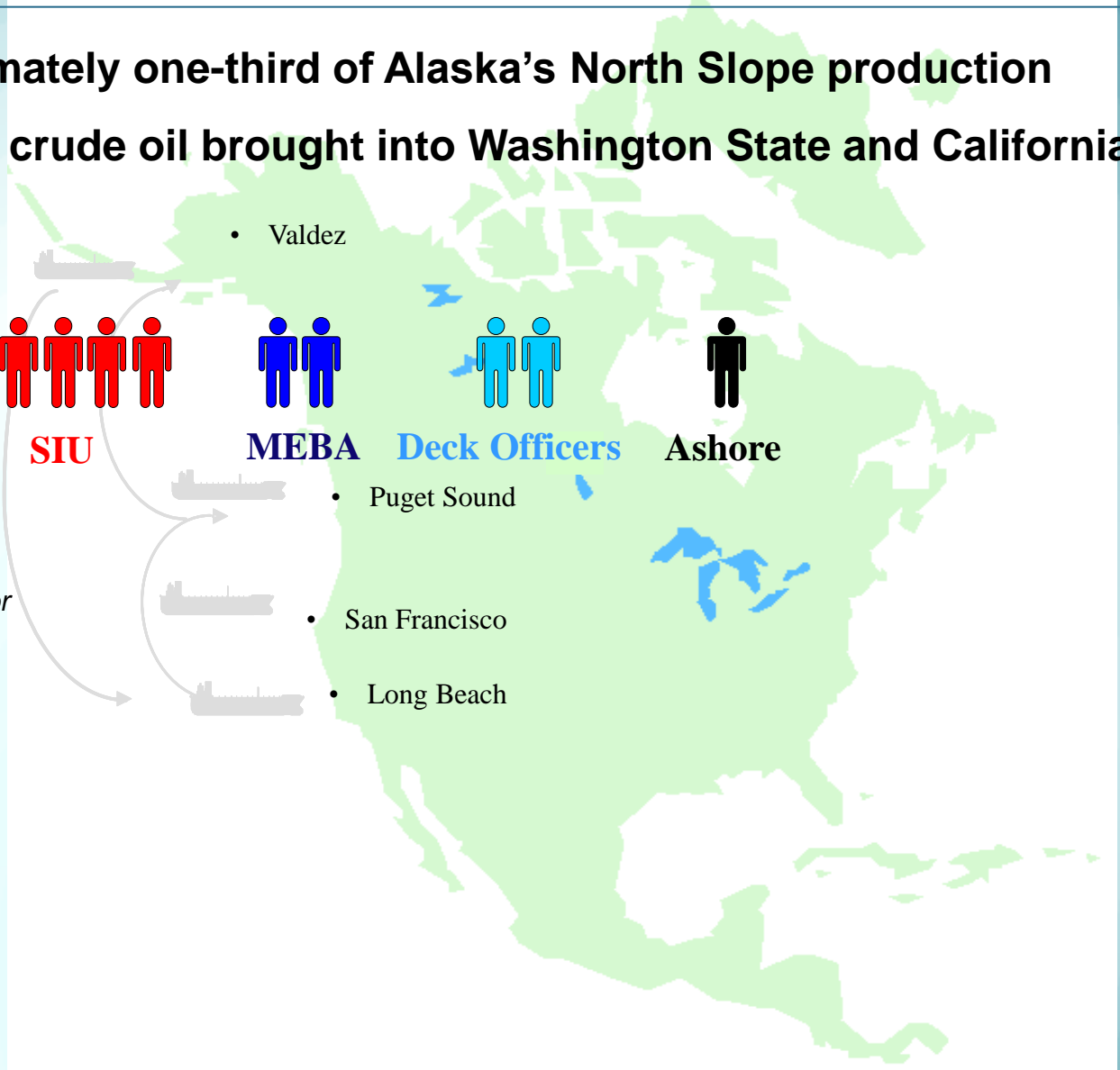
**Deck Officers**



**Ashore**

### FLEET

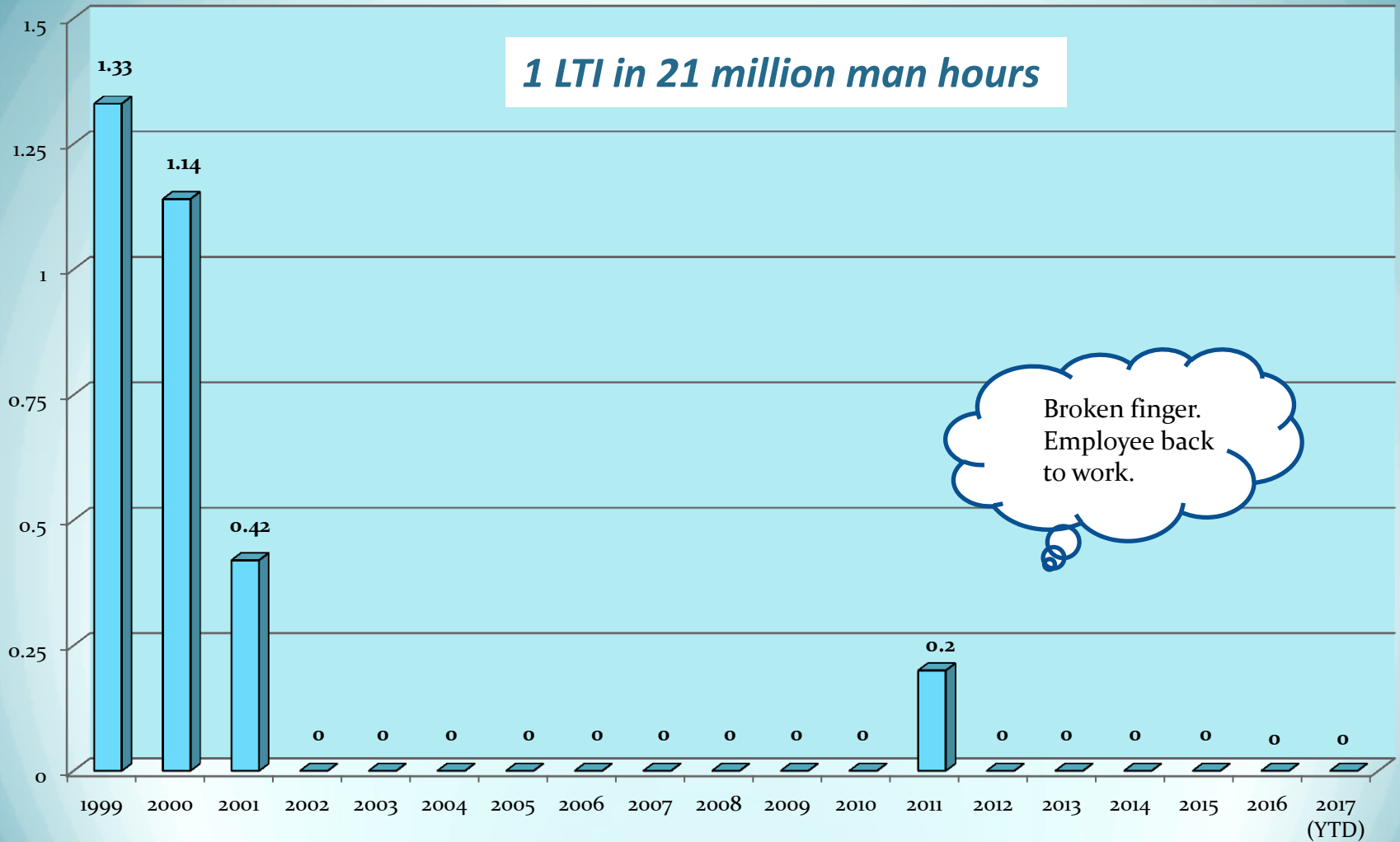
- Alaskan Frontier
- Alaskan Explorer
- Alaskan Navigator
- Alaskan Legend





# Lost Time Injury Frequency Comparison – Injuries per 200,000 Hours

Through Today

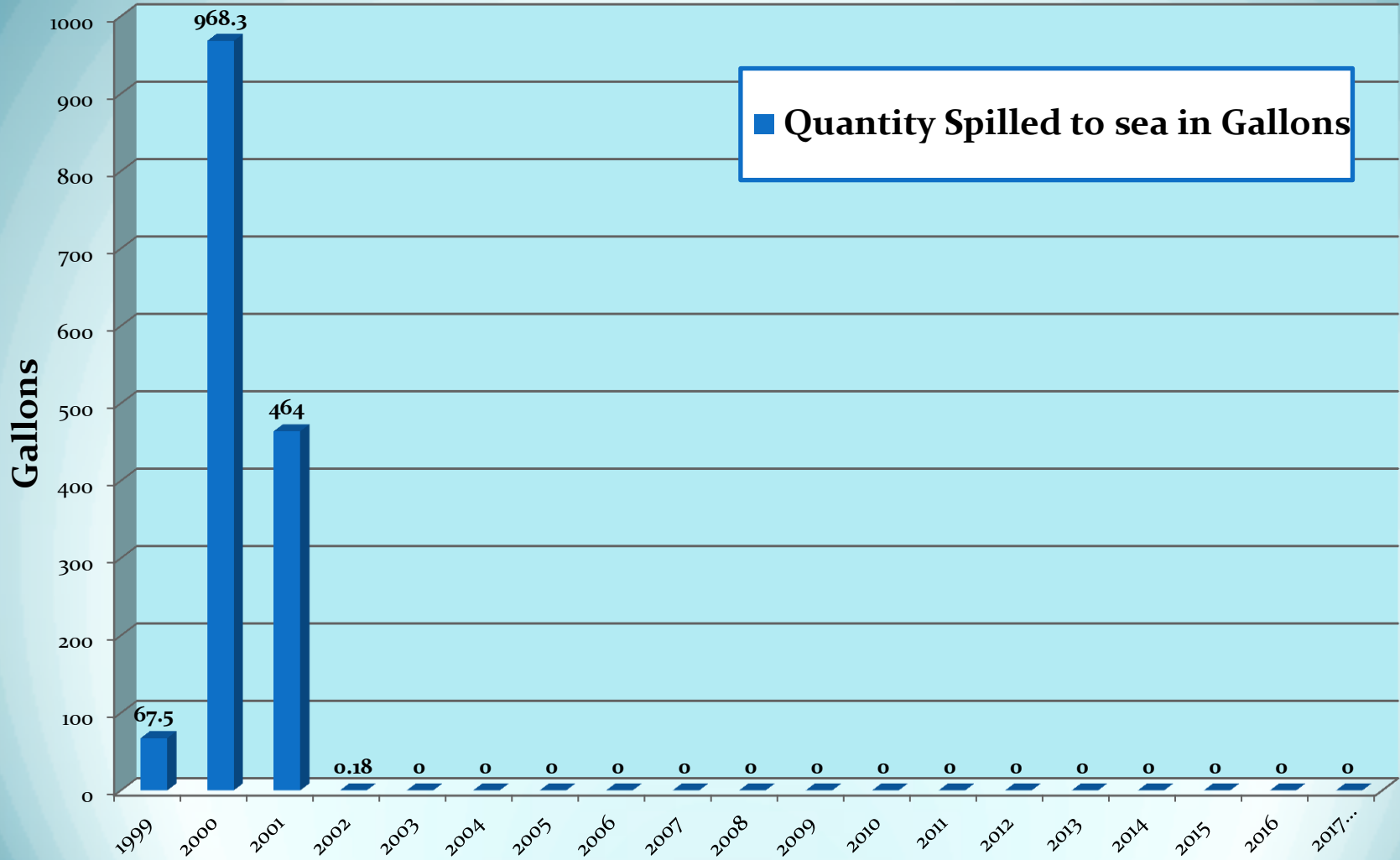


Note: 2004 onward includes all contractors, excluding dry-dock.



# Crude Oil Spills

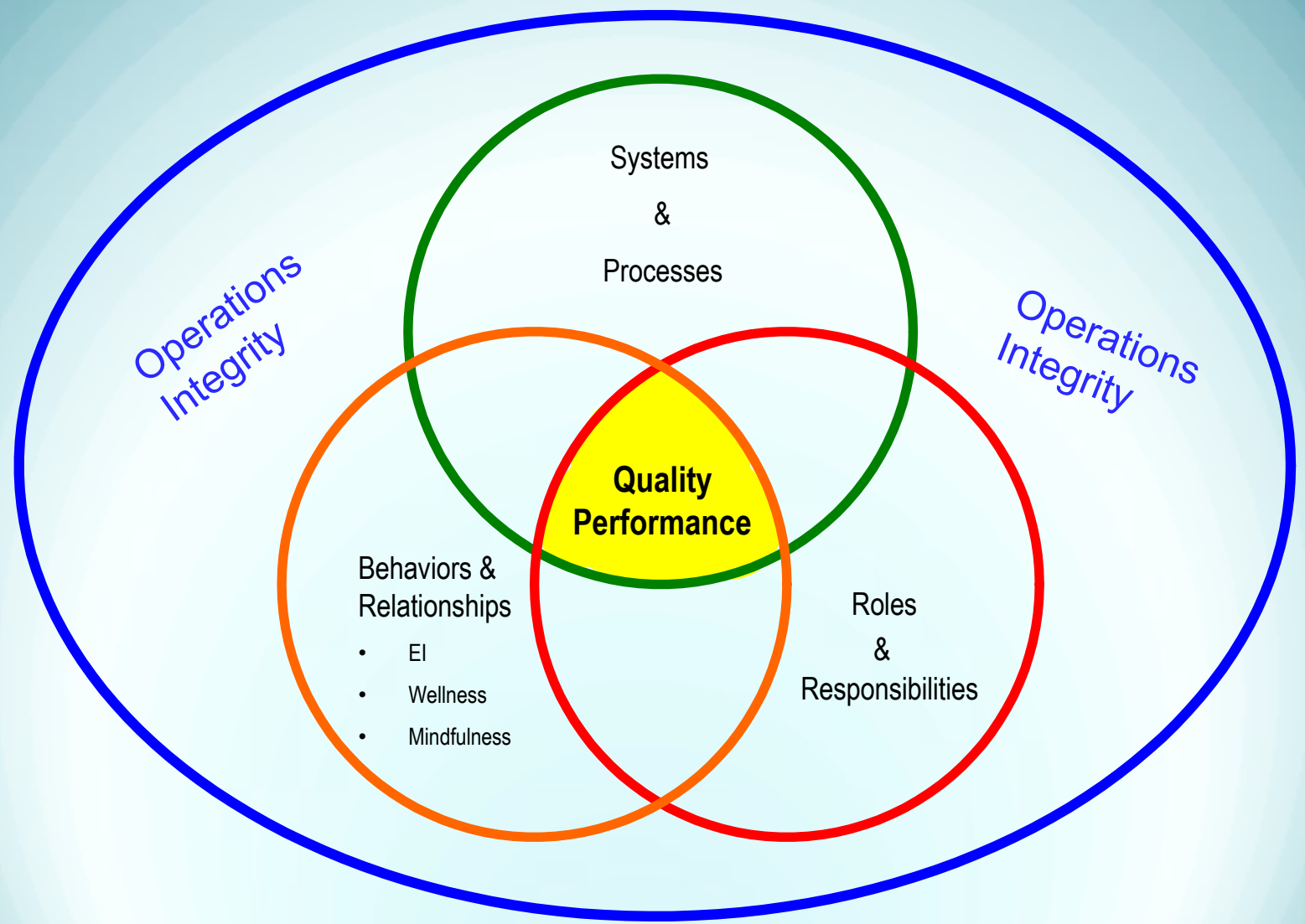
Through Today





Alaska Tanker Company  
**Performance Model**

---





# Performance Improvement Model

