



# Local Climate Change Preparation:

Portland's plan for a resilient future



# LEGACY OF LEADERSHIP

The cover of the 2015 Climate Action Plan features a photograph of a cable-stayed bridge over a river, with a forested hillside in the background. The text "CLIMATE ACTION PLAN" is overlaid in large, bold, blue letters with a white outline. At the bottom, a dark blue banner contains the text "JUNE 2015 LOCAL STRATEGIES TO ADDRESS CLIMATE CHANGE" and logos for the City of Portland and Multnomah County.

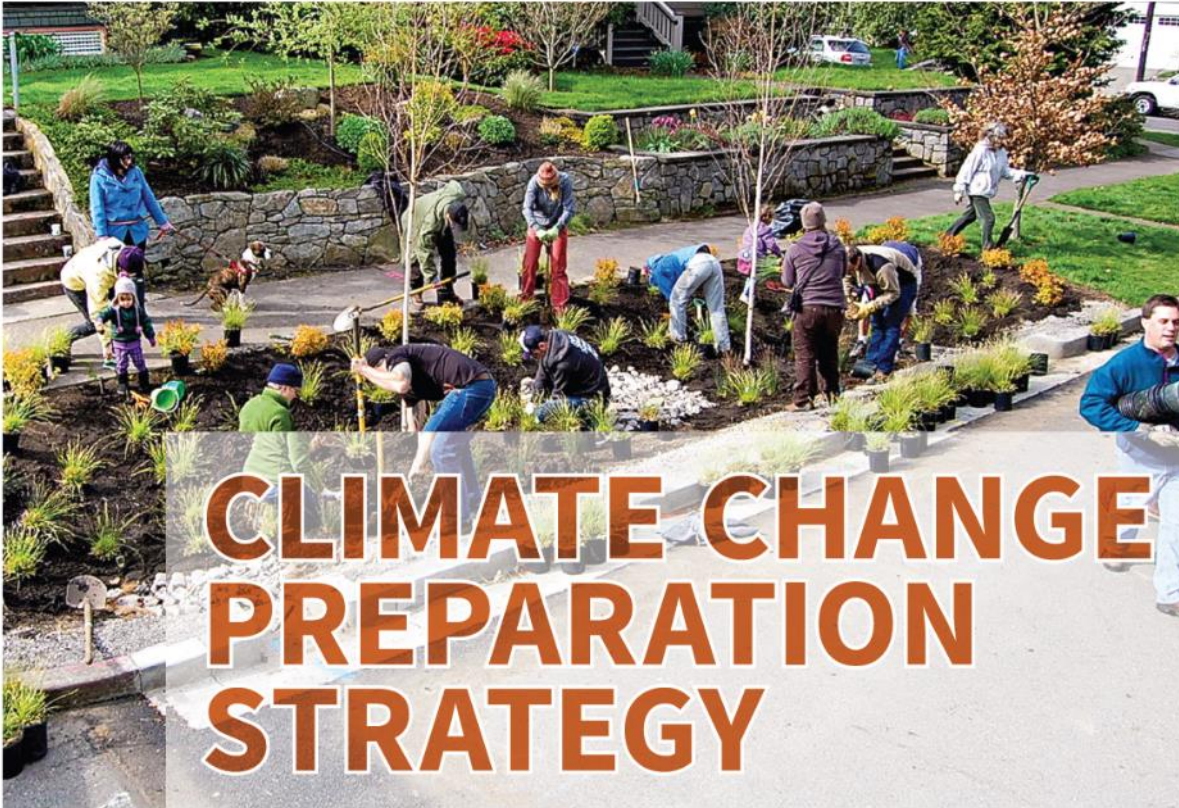
**CLIMATE ACTION PLAN**

Photo: Connecting Communities, Times

**JUNE 2015 LOCAL STRATEGIES TO ADDRESS CLIMATE CHANGE**





# CLIMATE CHANGE PREPARATION STRATEGY

PREPARING FOR LOCAL IMPACTS  
IN PORTLAND AND MULTNOMAH COUNTY | 2014



# CLIMATE CHANGE PREPARATION STRATEGY

# RISK AND VULNERABILITIES ASSESSMENT

PREPARING FOR LOCAL IMPACTS  
IN PORTLAND AND MULTNOMAH COUNTY | 2014



# Climate Change Preparation Planning

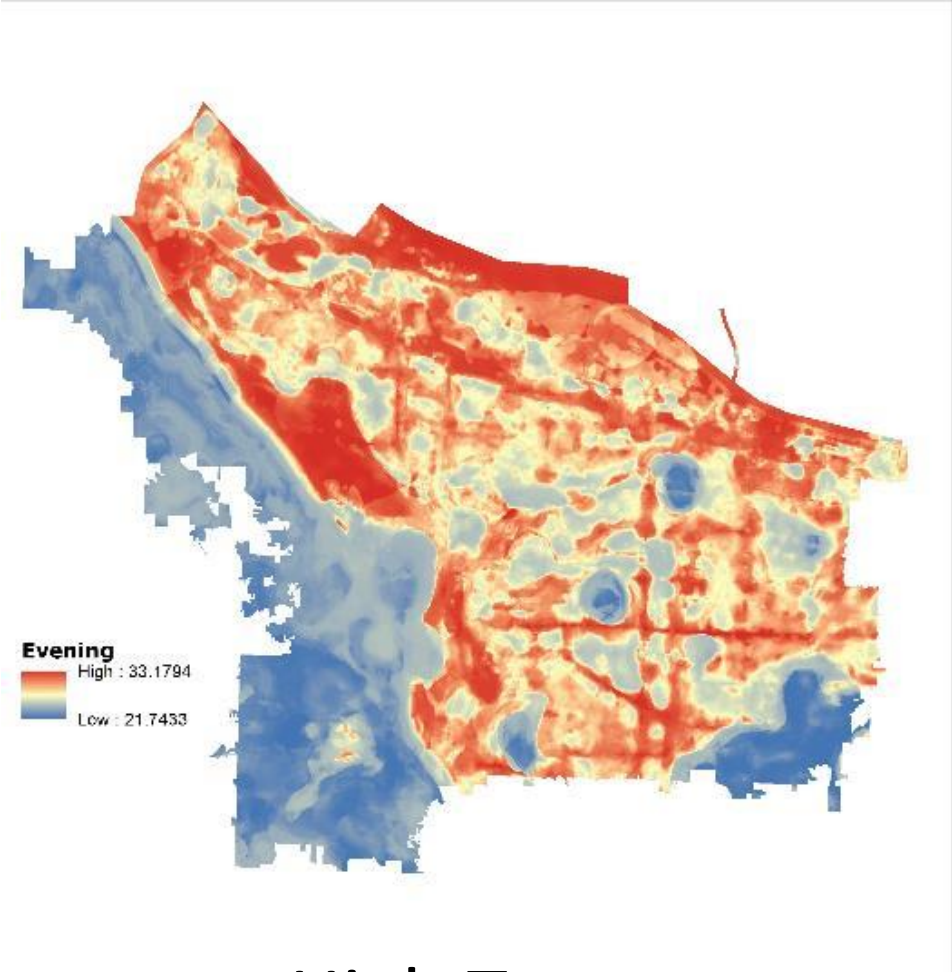
- Infrastructure and the Built Environment
- Natural Systems
- Health and Human Services



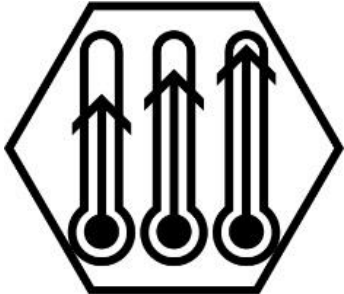


# Portland's Primary Risks

Hotter, drier summer with more high-heat days



High Temperatures



Verizon 10:49 AM katu.com

MENU **KATU 2** On Your Side 63°

### Hawthorne Bridge stuck in lift position likely due to heat

by Catherine Van  
Monday, June 26th 2017

Hawthorne Bridge stuck in lift position - KATU photo by Catherine Van.jpg

FACEBOOK TWITTER MAIL TRENDING

A screenshot of a mobile news article from KATU 2. The article title is "Hawthorne Bridge stuck in lift position likely due to heat" by Catherine Van, dated Monday, June 26th 2017. The article includes a photograph of the Hawthorne Bridge in its lift position. At the bottom of the page are social media sharing icons for Facebook, Twitter, Mail, and Trending.

# Portland's Primary Risks

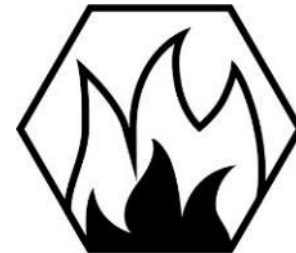
Hotter, drier summer with more high-heat days



Drought



Wildfire





# Portland's Primary Risks

Warmer winters with more intense rain events



Floods



Landslides





# Key Actions: Keep doing what we're doing





# Key Actions: Get ahead of some coming impacts





# Key Actions: Monitoring and research







# Key Actions: Apply climate preparedness to new arenas



**2035  
COMPREHENSIVE  
PLAN**

A circular inset image on the cover shows a man in a suit and a young child in a green jacket looking at a building. The child is pointing towards the building.

The official seal of the City of Portland, Oregon, featuring a figure holding a scale and a sword, surrounded by the words "CITY OF PORTLAND OREGON 1852".

**JUNE 2016**  
CITY OF PORTLAND, OREGON  
ORDINANCE NO. 187832

*To gaze upon Portland*



# Key Actions: Prioritize vulnerable communities

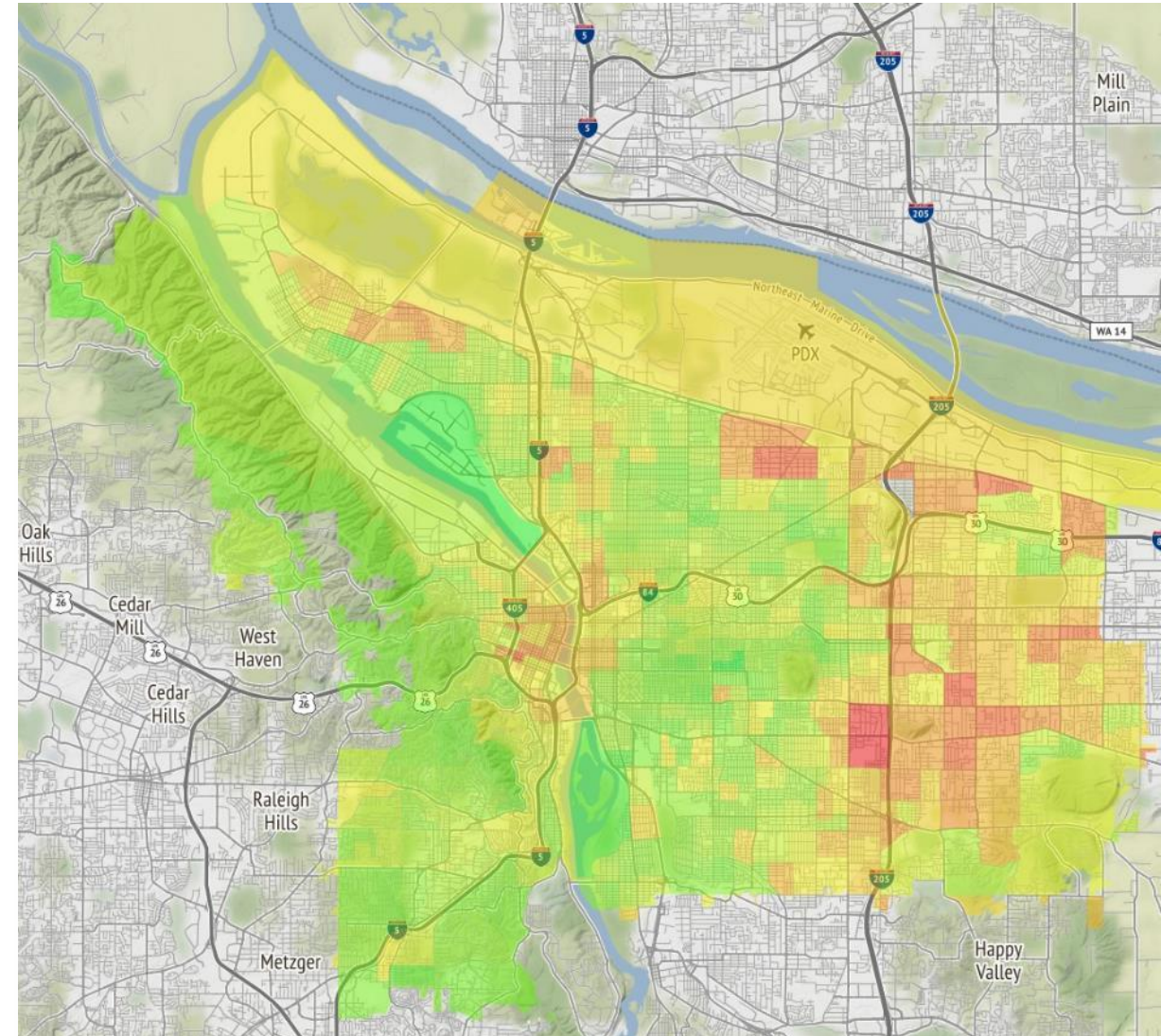
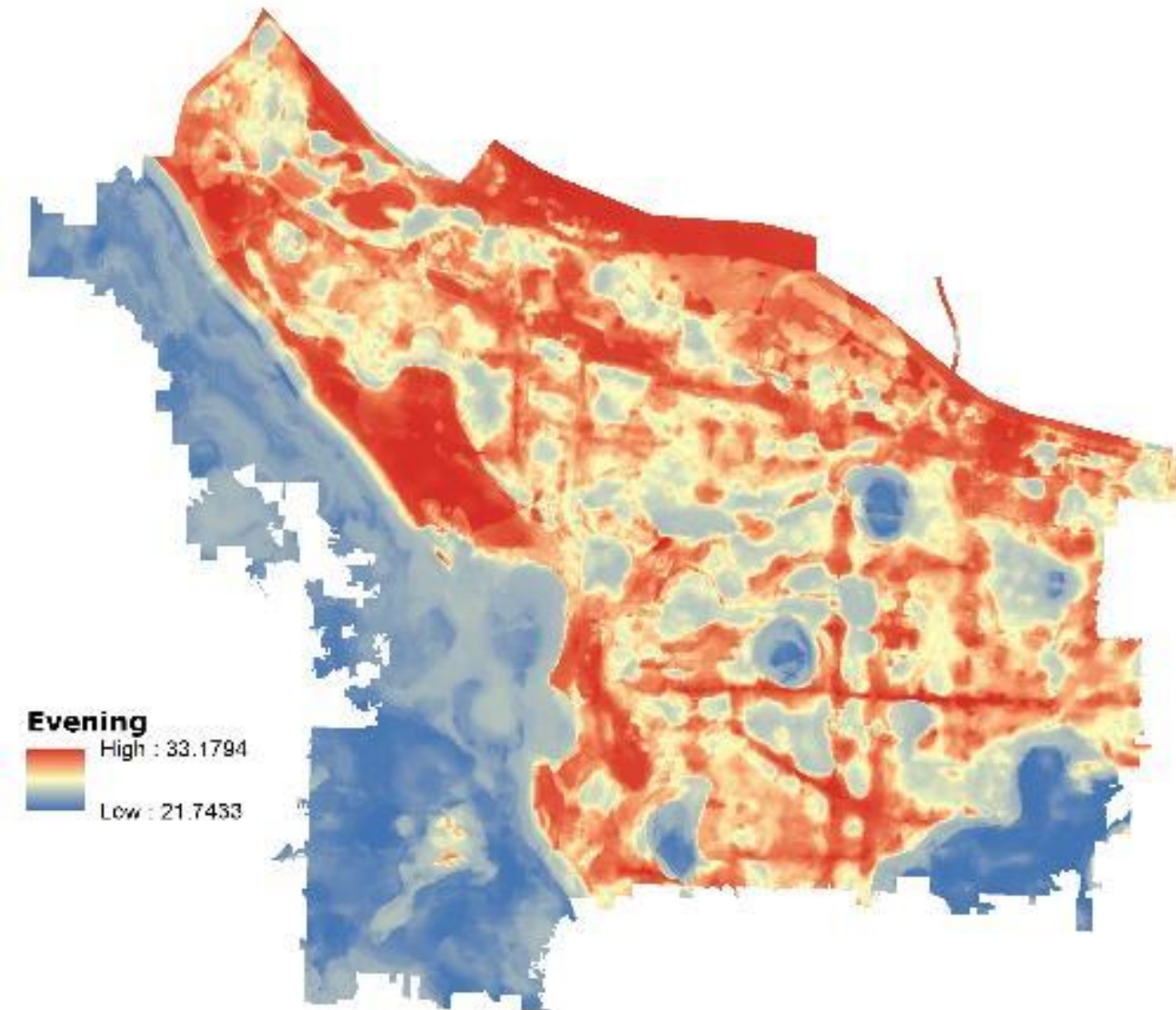




# Vulnerability to Urban Heat

Indicator	Urban Heat
Adults over 65	✓
Youth under 18	✓
Persons below 50% Poverty Line	✓
Adults without a High School Degree	✓
Communities of Color	✓
Obesity (BMI)	✓
Language other than English spoken at home	✓
Adults over 65 living alone	✓
Voter turnout	✓
In-home air conditioning	✓

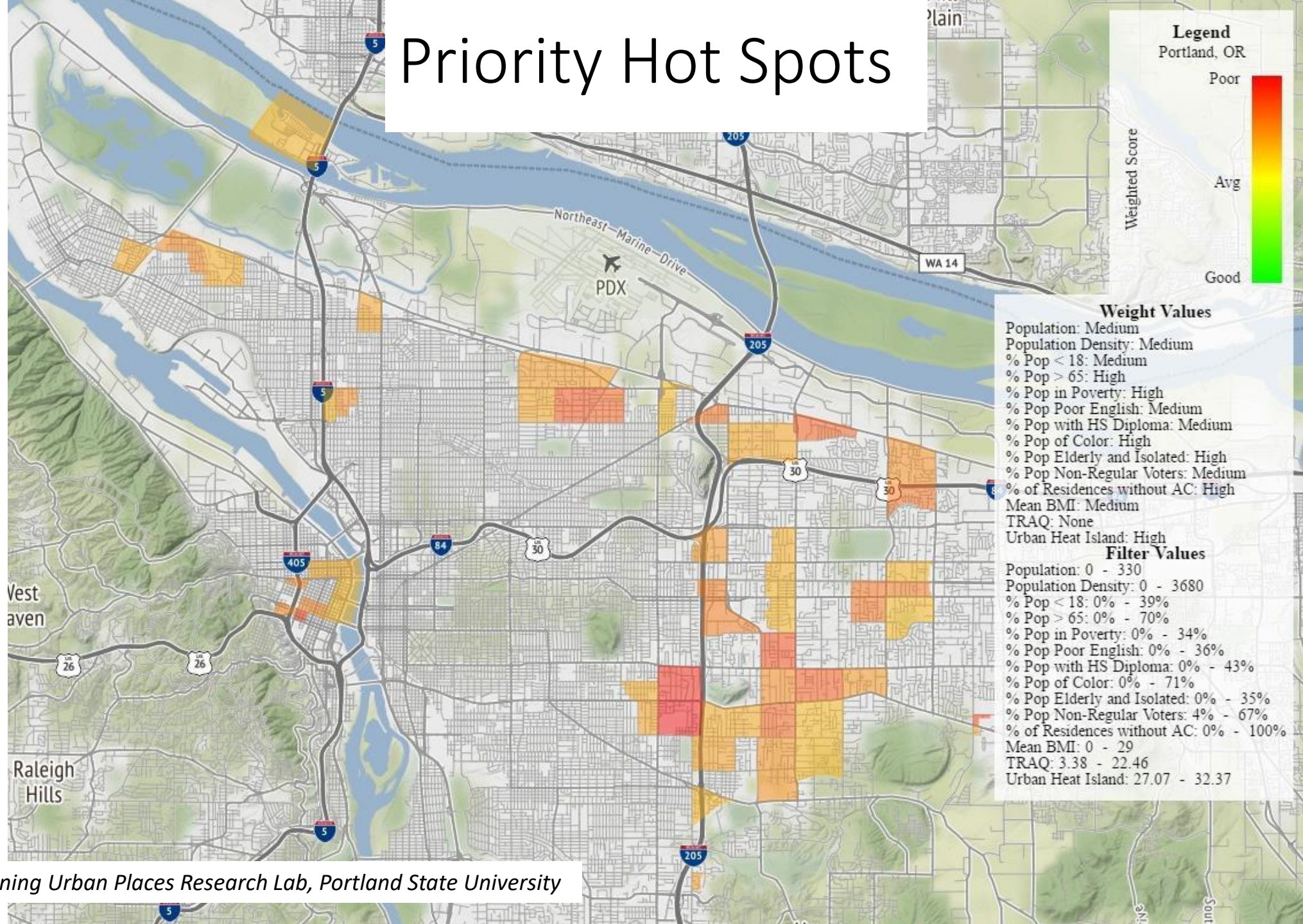
# Heat + Vulnerability = “Priority Hot Spots”



Source: Sustaining Urban Places Research Lab, Portland State University



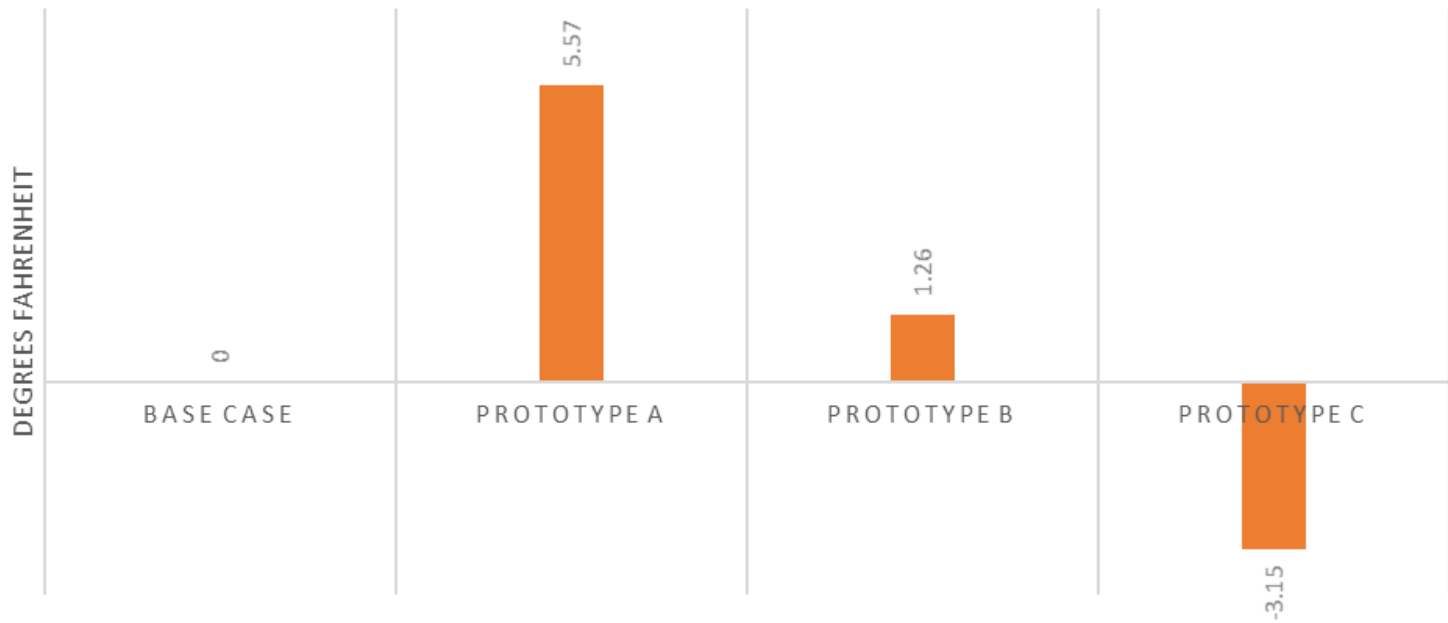
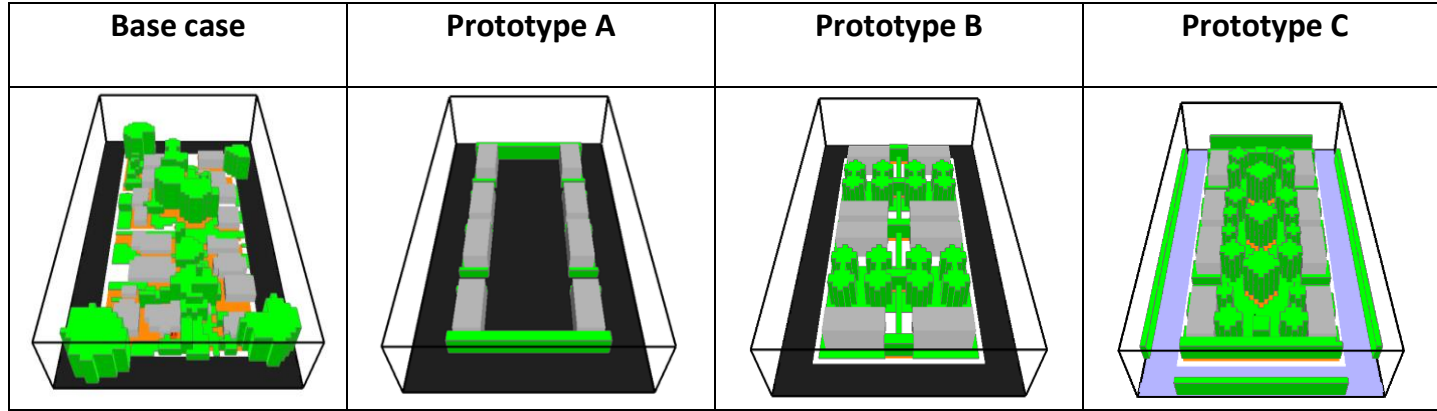
# Priority Hot Spots



Source: Sustaining Urban Places Research Lab, Portland State University



# Multifamily Development Code Update



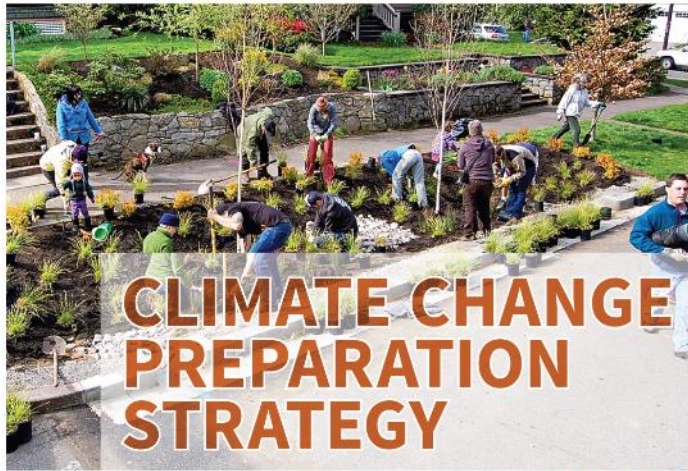
Source: Dr. Shandas and Dr. Makido, Sustaining Urban Places Research Lab, Portland State University



# CLIMATE CHANGE PREPARATION STRATEGY

## RISK AND VULNERABILITIES ASSESSMENT

PREPARING FOR LOCAL IMPACTS  
IN PORTLAND AND MULTNOMAH COUNTY | 2014



# CLIMATE CHANGE PREPARATION STRATEGY

PREPARING FOR LOCAL IMPACTS  
IN PORTLAND AND MULTNOMAH COUNTY | 2014



# CLIMATE ACTION PLAN

JUNE 2015 LOCAL STRATEGIES TO ADDRESS  
CLIMATE CHANGE

Photo: Connecting Communities, Inc.

[portlandoregon.gov/bps/climate](http://portlandoregon.gov/bps/climate)