



*Pacific NorthWest
Economic Region*

The Pacific Northwest Economic Region Presents:

Safer, Faster, Cleaner: The Future of Freight Mobility

Wednesday, August 18th | 9:30am-10:30am



Pacific NorthWest
Economic Region



Rep. Andrew Barkis

Washington State
Legislature



Gerardo Interiano

*VP, Government Relations
& Public Affairs*
Aurora



Zak Andersen

VP, Corporate Relations
BNSF

Safer, Faster, Cleaner- The Future of Freight Mobility

Zak Andersen

VICE PRESIDENT
CORPORATE RELATIONS

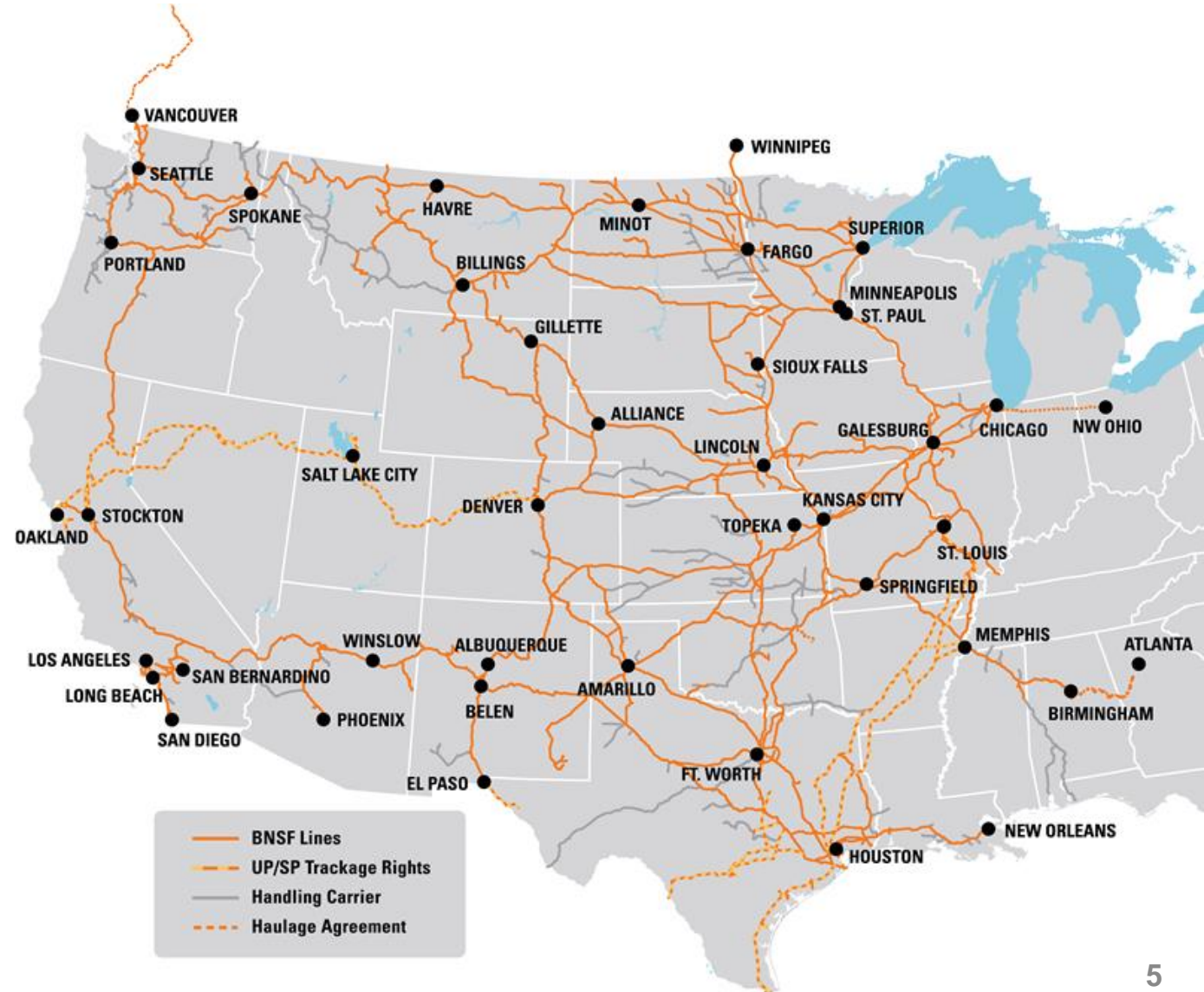
AUGUST 18, 2021

This is BNSF



About BNSF Railway

- A Berkshire Hathaway company
- ~**34,000** employees
- ~ **8,000** locomotives
- Operates an average of **1,200** trains/day
- **32,500 route miles** in 28 states and three Canadian provinces
- **13,000** bridges and **89** tunnels
- Serves **+40 ports**
- **26** intermodal facilities

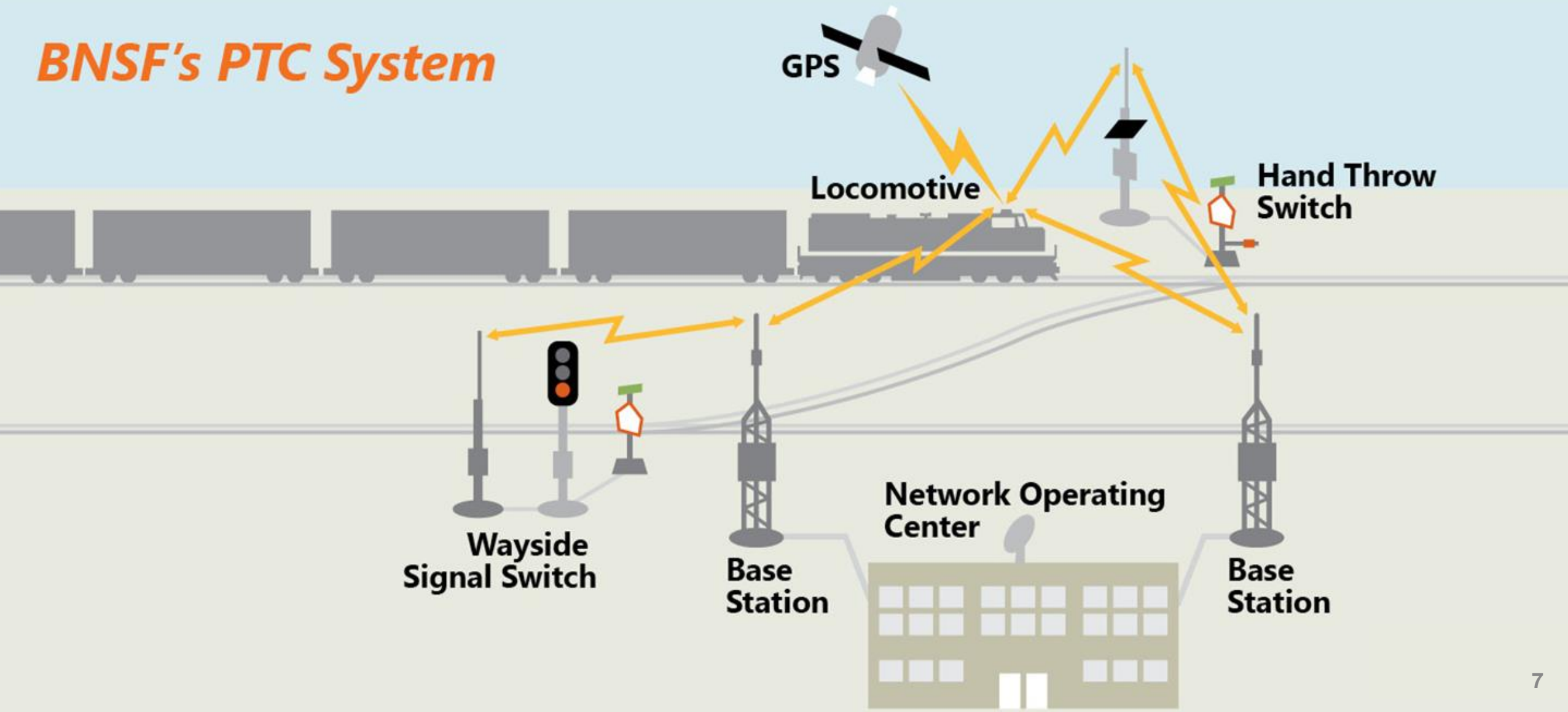




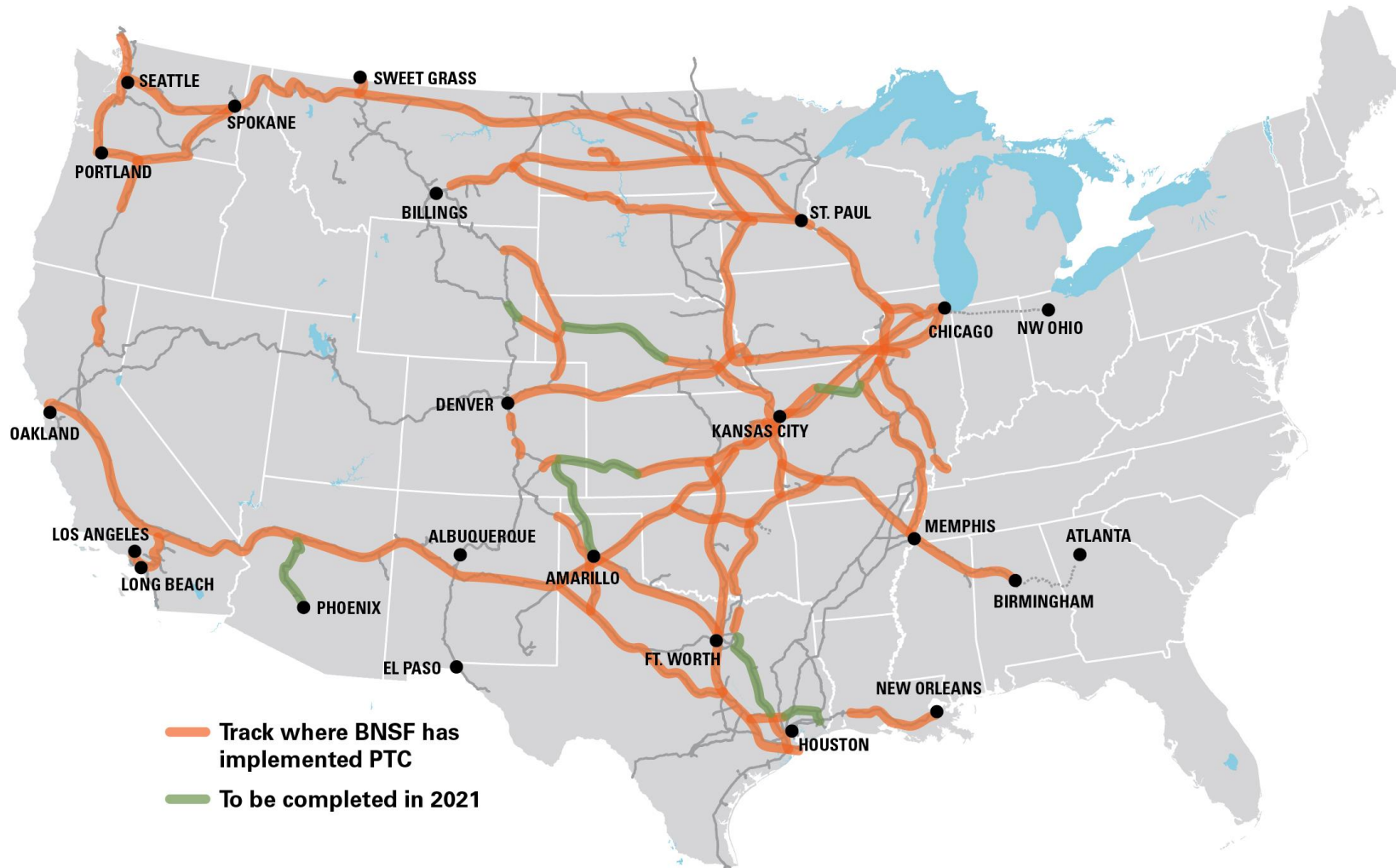
Safety

Positive Train Control Enhances Safety

BNSF's PTC System



Leveraging PTC Technology for Efficiency



Installation of mandated PTC infrastructure completed in Dec. 2017

- **92%** of freight volume is moving on PTC routes
- **14,500+** route miles of PTC infrastructure have been installed

Autonomous Track Geometry Cars

Purpose:

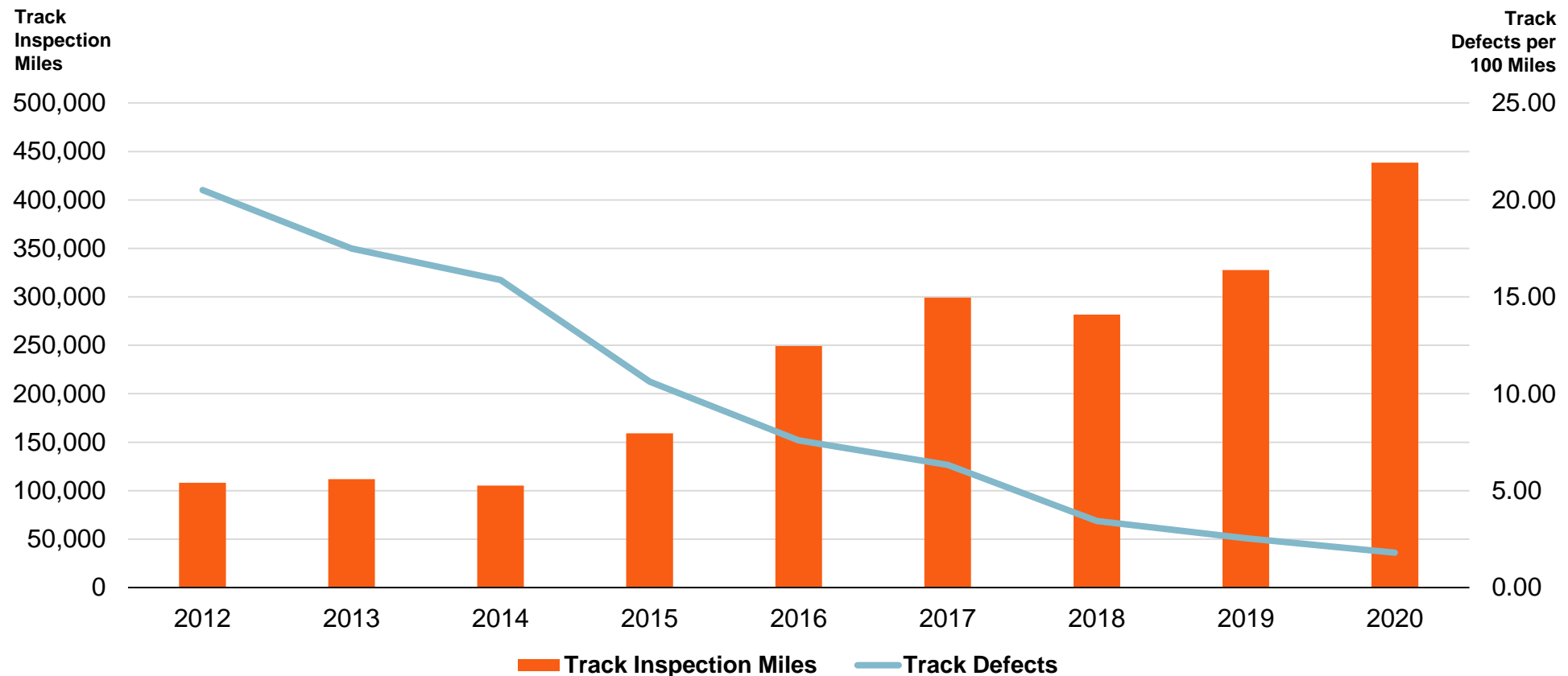
- Reduce risk to employees
- Drive inspection efforts on track where they are most needed
- Increase the availability of network and track to customers by reducing number of inspection-related work windows



Increased Track Inspection Miles Drive Improvements



Since 2012, BNSF has reduced the number of track defects by 91%



Equipment Detection Technology

- More than 4,000 trackside detectors
- Hot Box Detector (HBD)
- Wheel Load Impact Detector (WILD)
- Trackside Acoustical Detector (TADS)
- Sonic Cracked Wheel/Axle Detector (CWAD)
- Machine Vision Systems
- Magnetic Particle Inspection
- Warm Bearing Detection System (WBDS)
- Hot Wheel Detectors (HWD)
- Truck Performance Detectors (TPD)



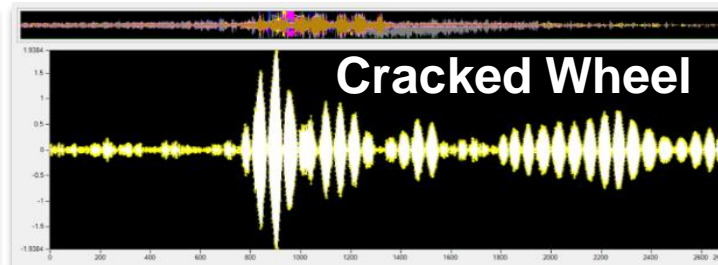
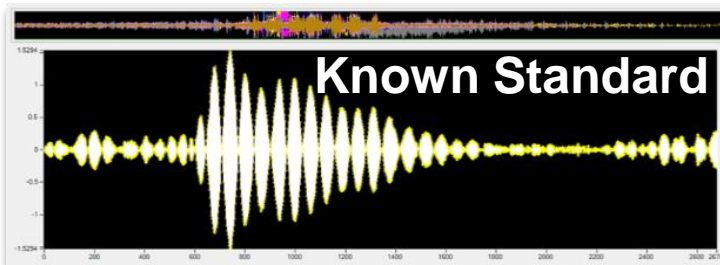
Moving from Detection to Prediction



- **Acoustic Bearing Detector (ABD)** – acoustic systems used to evaluate sounds generated by specific bearing component defects



- **Hot Box Detector (HBD)** – evaluates bearing temperature history for statistical outliers; brake issues, burned off journals

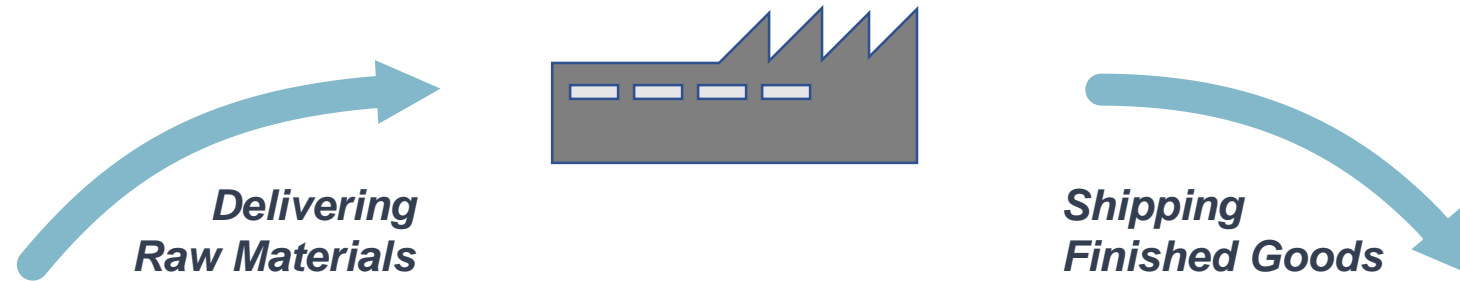


- **Cracked Wheel/Axle Detector (CWAD)** – Rail mounted sensors capable of detecting the difference between tones generated by normal vs. flawed wheels and axles

Efficiency



Shifting to Rail Cuts Land Freight Carbon by Roughly Two-Thirds



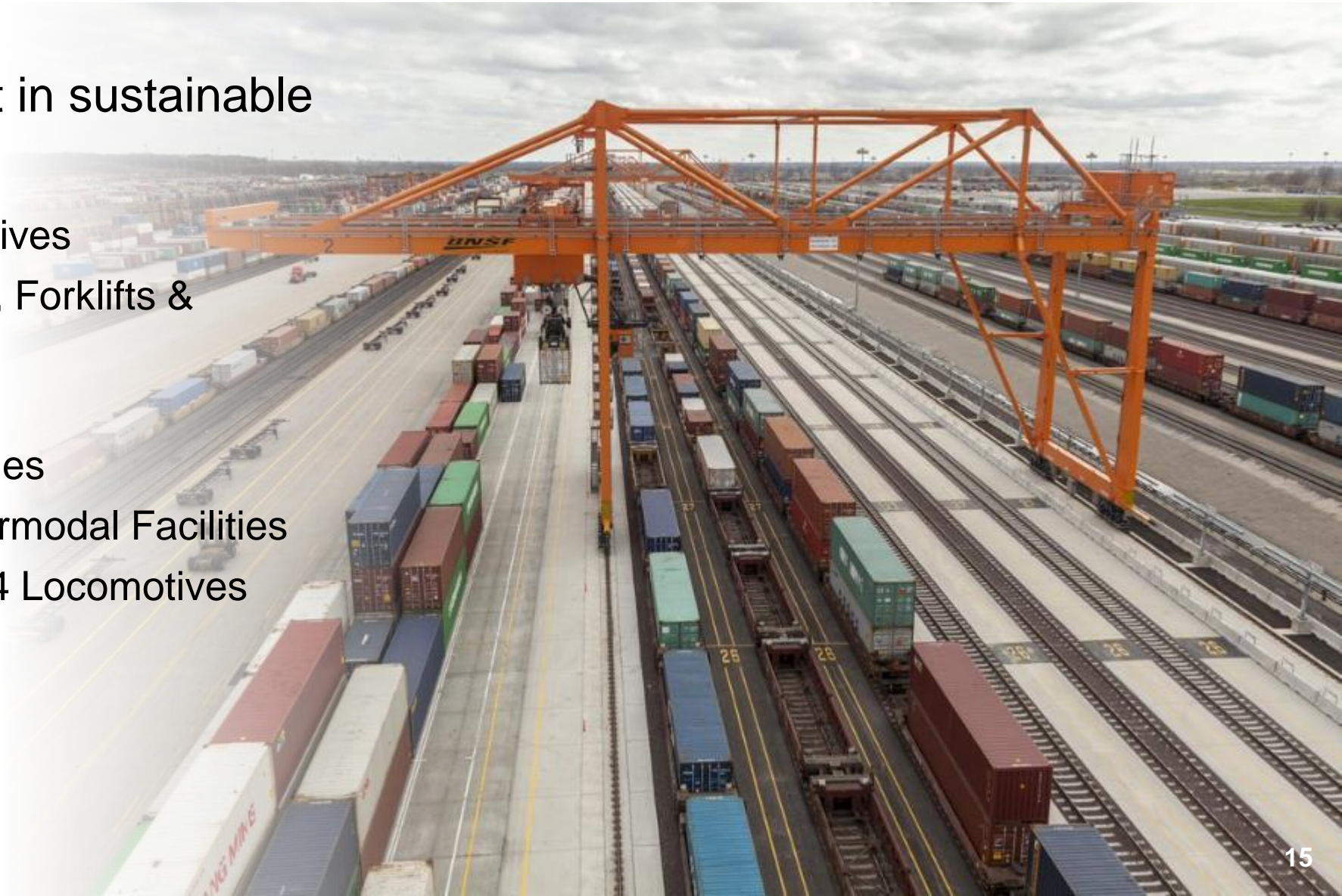
Reducing Highway Congestion	Increasing Fuel Efficiency	Generating Fewer Emissions
One BNSF intermodal train removes several hundred long-haul trucks from our nation's highways	Rail is over 3 times more fuel efficient than long-haul trucks	BNSF customers reduce GHG emissions by over 34 million metric tons each year vs. highway

Results: Significant carbon avoidance and reduction of supply chain emissions for rail customers

Becoming Even More Sustainable

BNSF continues to invest in sustainable technologies:

- Battery-Electric Locomotives
- Battery-Electric Hostlers, Forklifts & Drayage Trucks
- Idle Control
- Electric Wide-Span Cranes
- Automated Gates at Intermodal Facilities
- More Fuel-Efficient Tier 4 Locomotives



Battery Electric Locomotive

Op Cab

- No Change

Aux Cab

- New Inverter Arrangement
- 480VAC Bus

Blower Cab

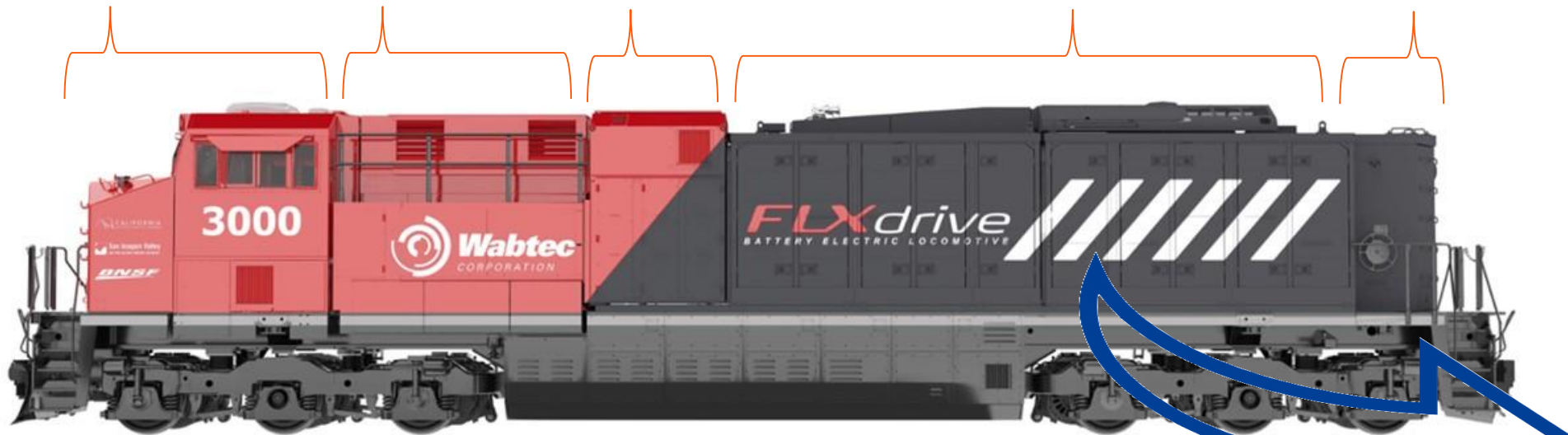
- Traction Blower
- Aux Blower
- HV/LV cabinets
- Batt Cab Door

Battery Cab

- Climate controlled
- 20 Racks
- 25 Modules per rack

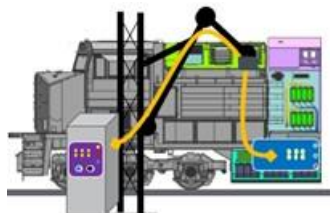
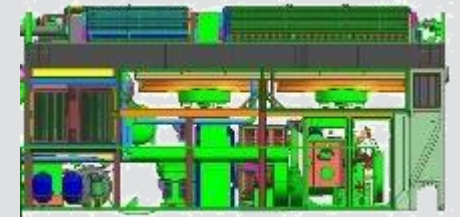
Sand Cab

- Batt Cab Door
- Sand Box's
- Hand Brake



Eliminated

- Engine
- Alternator
- Cooling System



Repurposed Fuel Tank

- A-side: Compressed Air components
- B-side: Wayside Charging components

BNSF Carbon Reduction Programs and Results

Carbon Reduction Results and Target

- Emissions: Cut carbon intensity in half over last 40 yrs.
- Target: In March, committed to set a Science-Based Carbon Target

Carbon Reduction Program

- Fuel Efficiency Program leveraging technology, operations
- Expanding use of lower carbon intensity renewable diesel
- Developing zero emission equipment for intermodal railyards
- Piloted a battery-electric locomotive



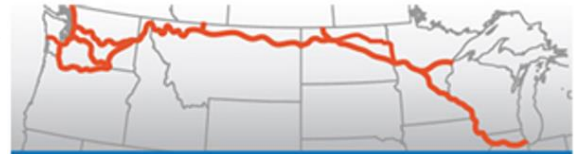
Battery-electric yard trucks

Great Northern Corridor



Great Northern Corridor Coalition

GNCC Mission: Promote a premier multistate / multimodal corridor by acting collectively to promote public policy, research, and multimodal infrastructure development that protects and expands commerce and enhances safety on the corridor.



**GREAT
NORTHERN**
CORRIDOR COALITION



BNSF
RAILWAY



DEC