
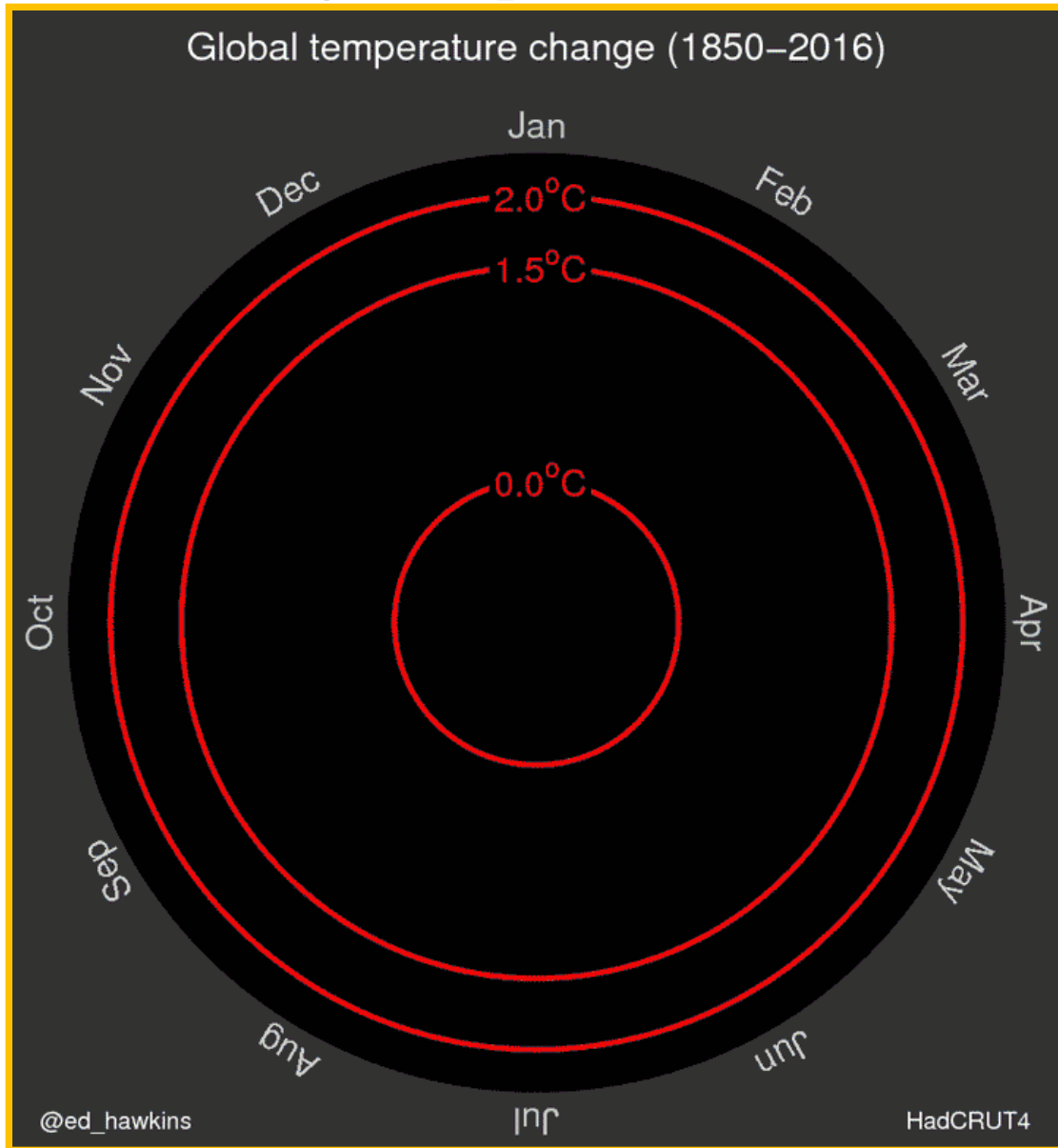

Oregon Climate and Health Program

The background of the title banner features a silhouette of a family (a man, a woman, and a child) walking towards the right against a sunset sky with a bright sun on the horizon.

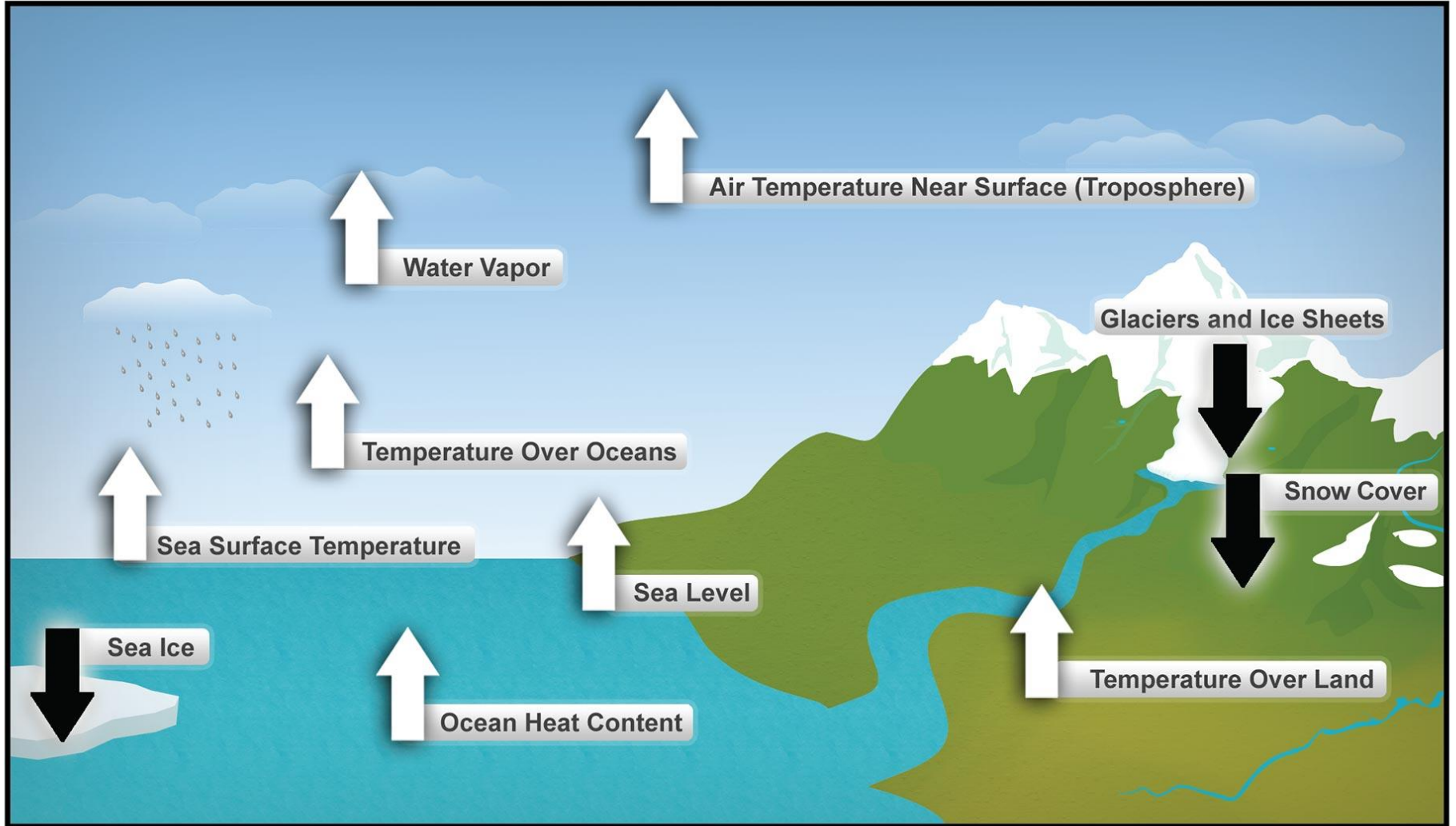
healthoregon.org/climate

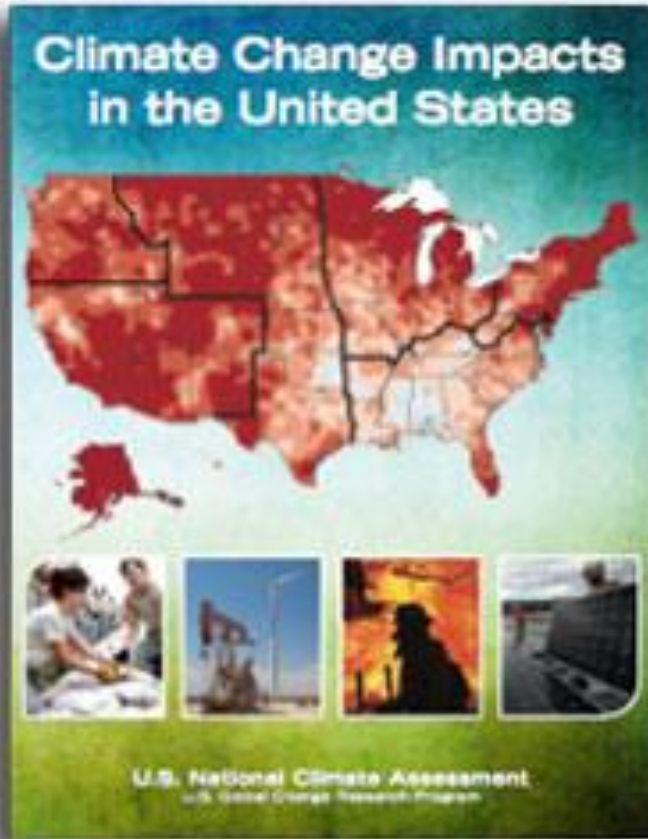
Oregon
Health
Authority

Global Average Temperatures have been increasing



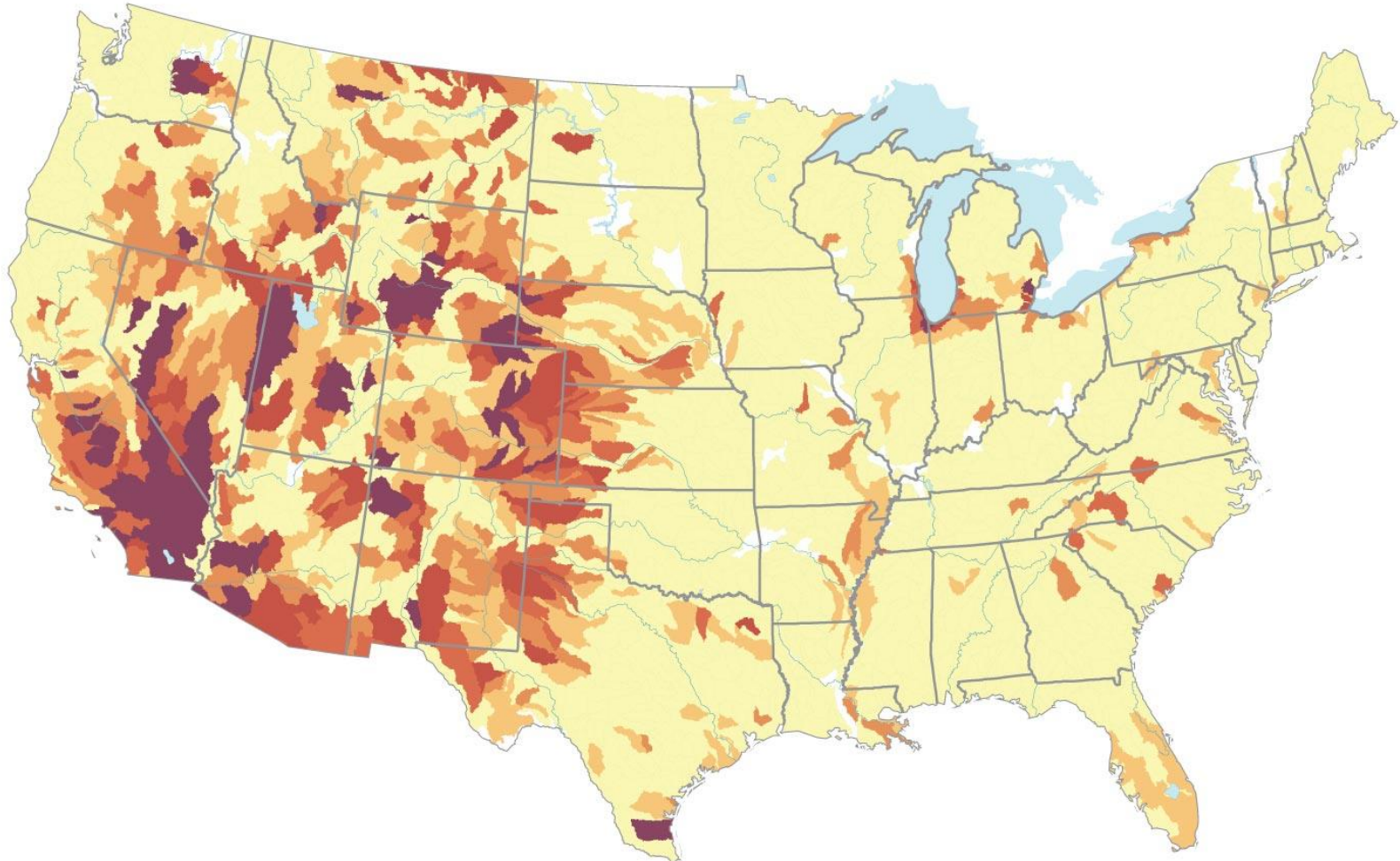
Ten Indicators of a Warming World





U.S. Global Change Research Program
**National Climate
Assessment**

Water Stress in the U.S.



Water Supply Stress Index

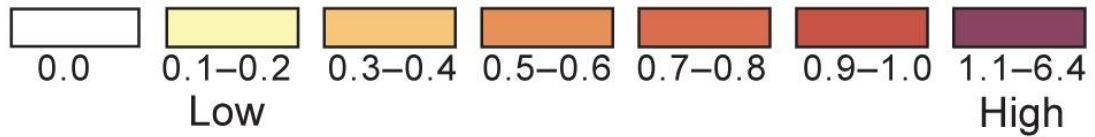




Photo by John



May 1st, 2014



February 23rd, 2015

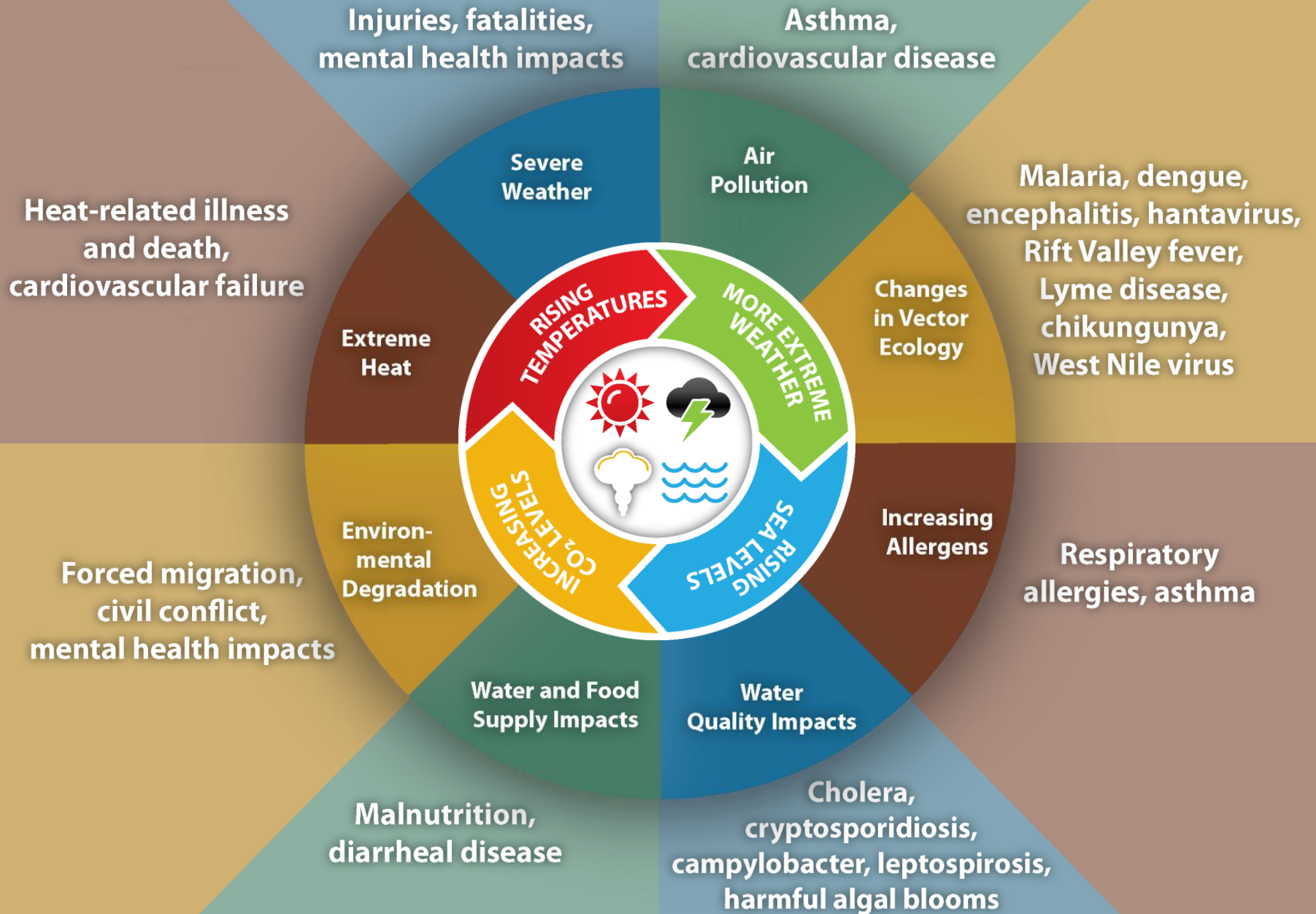








Impact of Climate Change on Human Health







AUTO DETAIL
1111 N. 10th St.
Pet Wash
812-8485

THE BURN
restaurant & lounge

THE BURN
restaurant & lounge

WATER
COMPANY
SANDS

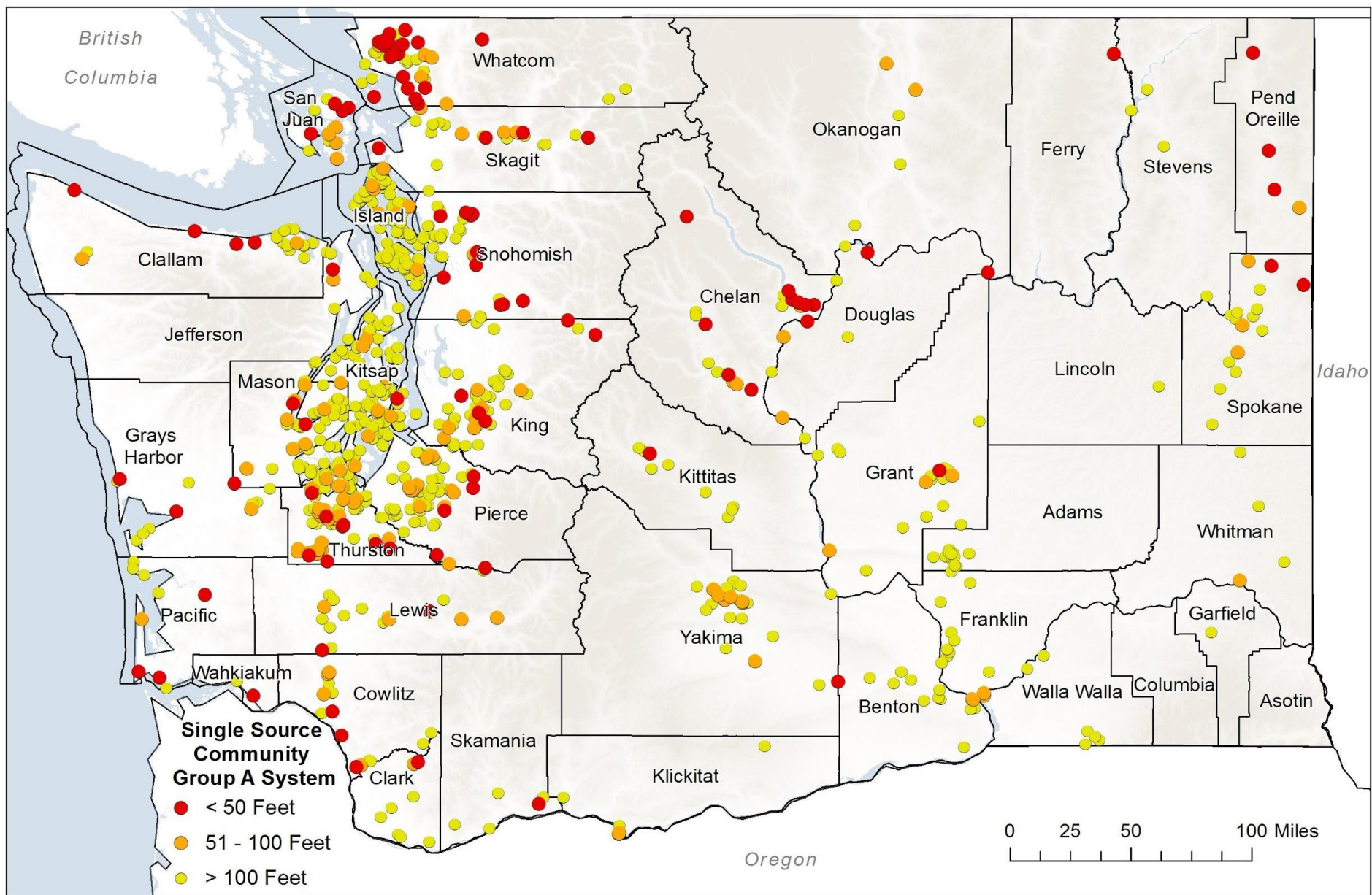
SANDS
Print
Art

GUNS
MOUNTAINS
& STEREOS
VIDEO
GAMES

HIGH
WATER

CENTER
LANE
ONLY

Kang's

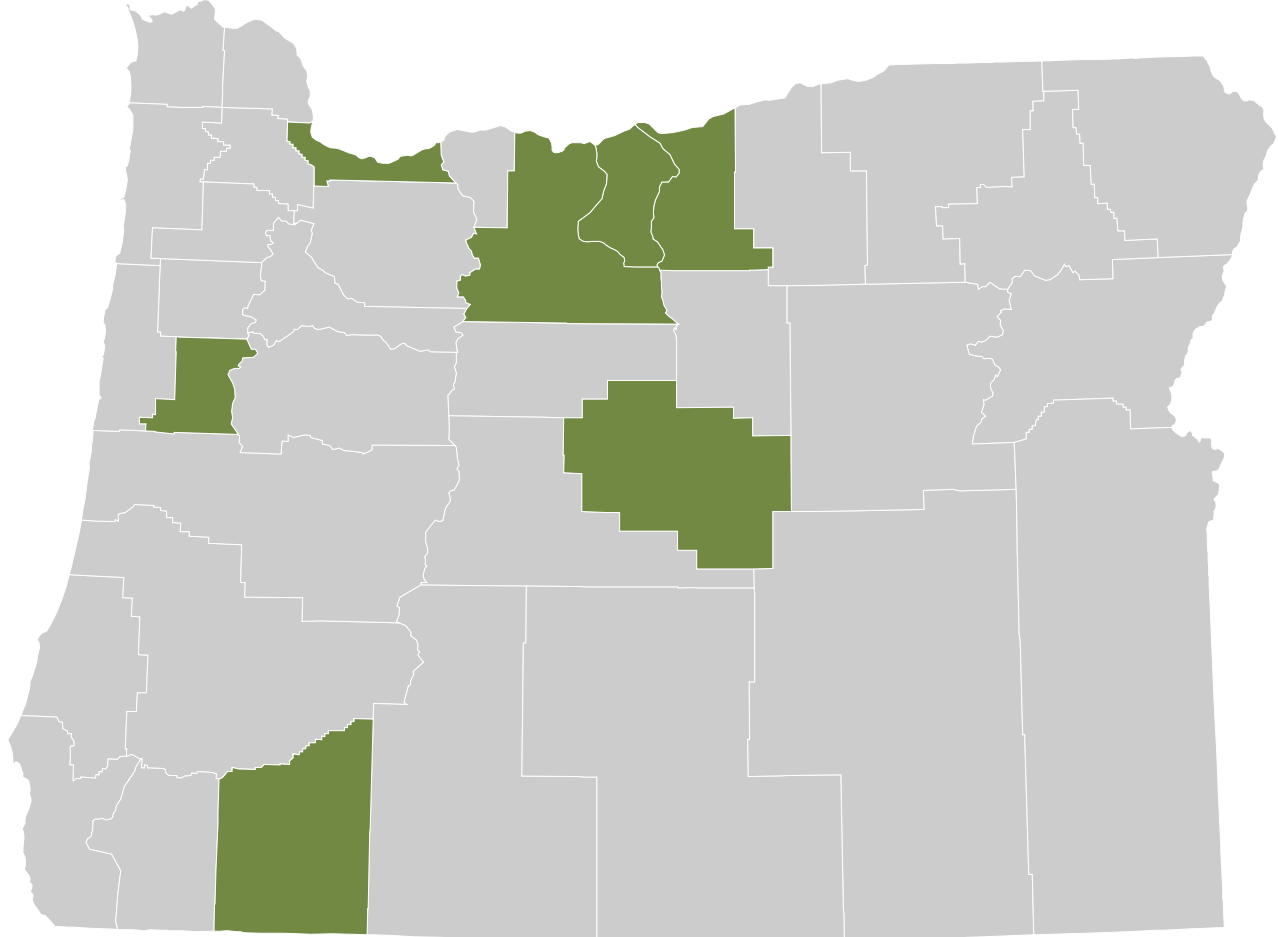


98% of local health departments in Oregon have indicated only minimal ability to identify and prevent environmental health hazards.



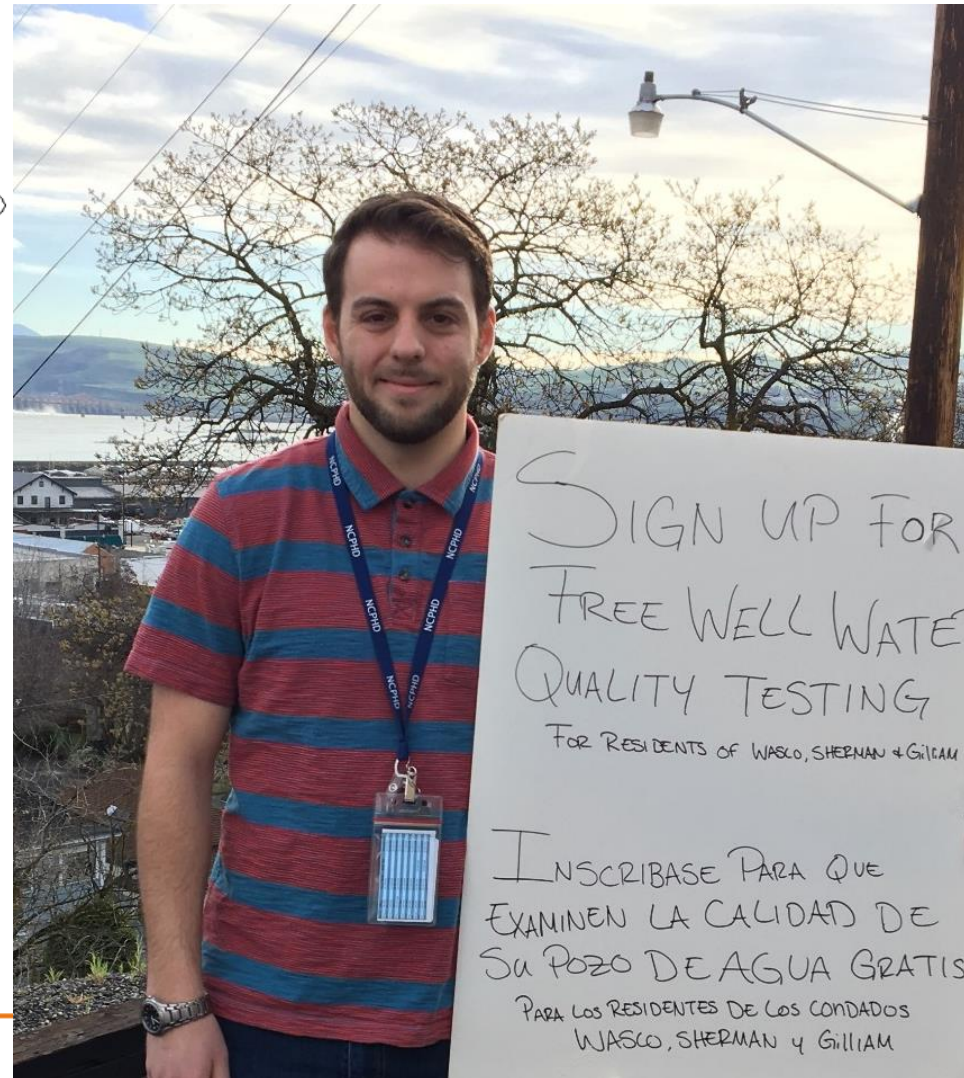
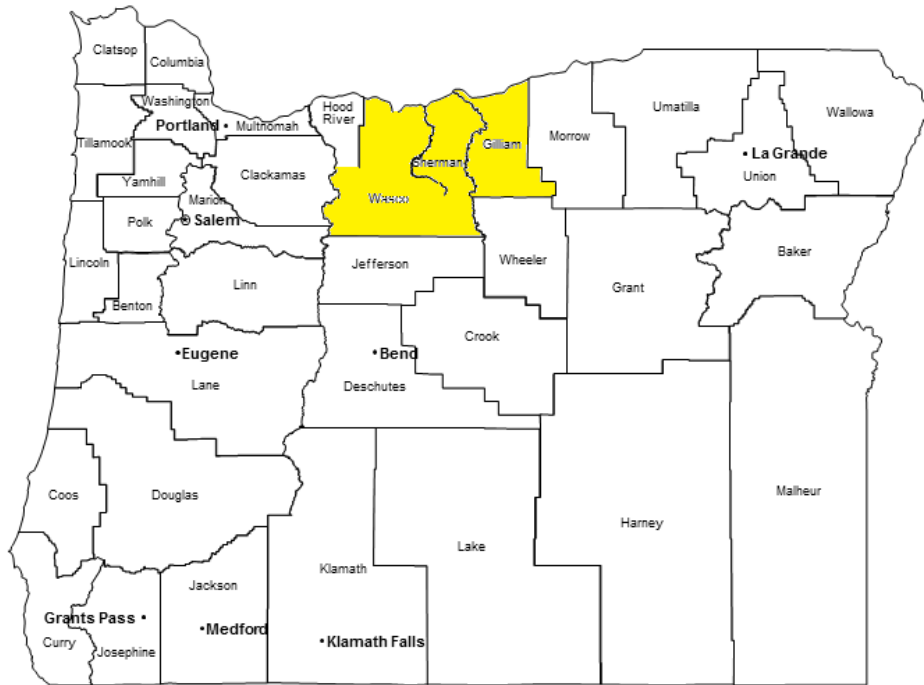


1. INVOLVE
2. PARTNER
3. ASSESS
4. PLAN
5. PREPARE
6. COMMUNICATE
7. LEAD



North Central Health District

Wasco, Sherman, and Gilliam Counties



Nitrates



May Cause Pancreatic Cancer

Daily intake of processed meats, which are high in nitrates, seems to increase the risk for pancreatic cancer



Linked to Alzheimer's & Diabetes

Research shows that nitrates may affect brain health and insulin reactions



May Harm Your Baby

Too many nitrates or nitrites can cause a condition known as methemoglobinemia or "blue baby syndrome"

Arsenic

Nervous System

Impaired intellectual function
Impaired motor function
Neuropathy

Cardiovascular System

Coronary heart disease
Hypertension
Heart attack

Renal System

Kidney cancer
Bladder cancer

Skin

Skin lesions
Skin cancer

Endocrine System

Diabetes
Impaired glucose tolerance in pregnant women

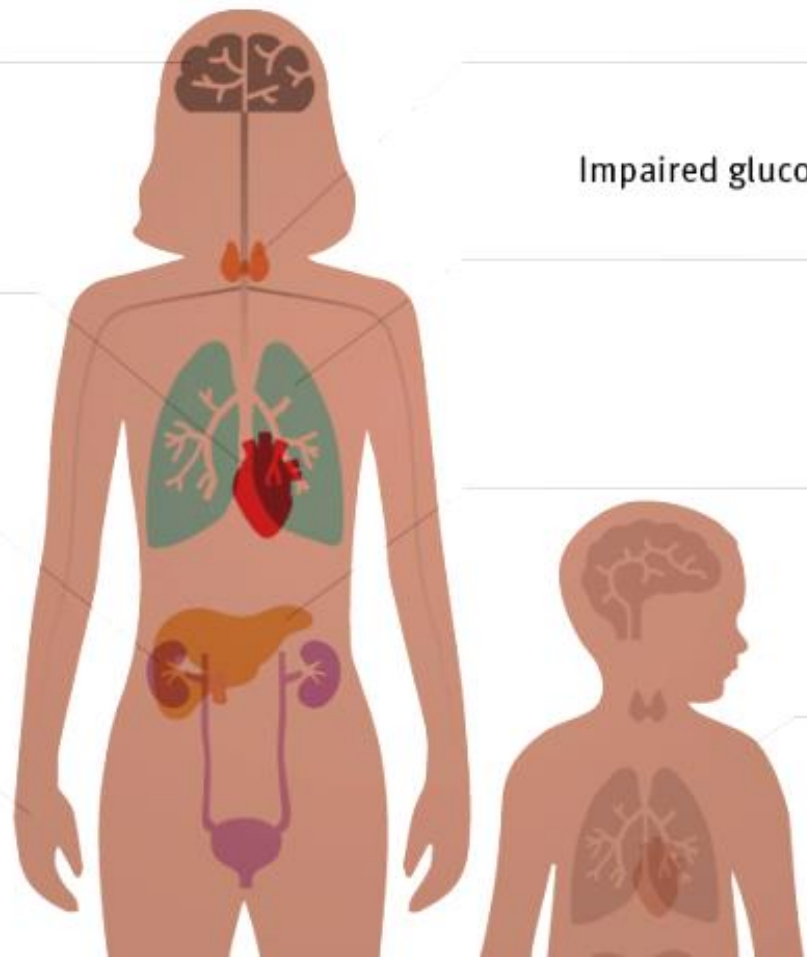
Respiratory System

Pulmonary tuberculosis
Bronchiectasis
Lung cancer

Liver cancer

Developmental Process

Increased cancer risk as adults
Increased infant mortality
Neurological impairment
Reduced birth weight



Climate Impacts on Human Health

Heat-related illness

- » Increasing temperatures and heat wave days result in elevated body temperatures. This can lead to heat stroke, heat syncope, heat exhaustion, heat cramps and heat rash.
- » Vulnerable groups:
 - Pregnant women
 - Older adults
 - Children
 - Low-income persons
 - Socially isolated individuals
 - Outdoor workers
 - Urban residents
 - Communities of color

Mental health

- » Displacement, illness and injury because of environmental changes can lead to anxiety, depression, suicidal ideation and disruption of social networks. Exposure to pollution has been linked to developmental delays in children.
- » Vulnerable groups:
 - Coastal communities
 - American Indians
 - Farm workers
 - Urban residents

Allergens

- » Increasing pollen counts and pollen potency result from rising temperatures and carbon dioxide levels. Increasing mold growth following storms and flooding also causes higher rates of allergic rhinitis and asthma attacks.
- » Vulnerable groups:
 - People with preexisting conditions
 - Children

Respiratory disease and illness

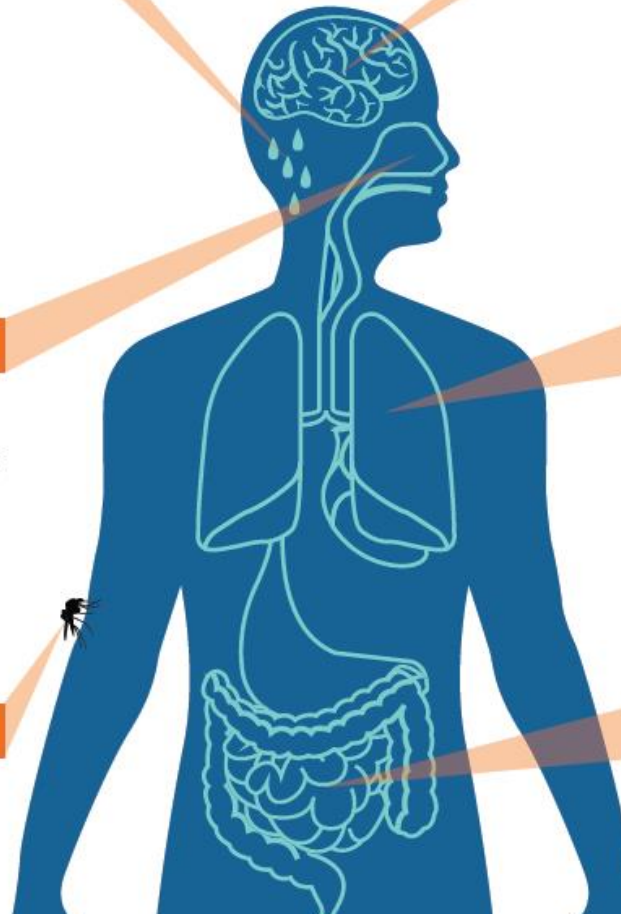
- » Air pollution and smoke from wildfires can exacerbate preexisting conditions and cause new respiratory diseases and illness.
- » Vulnerable groups:
 - People with preexisting conditions
 - Children
 - Older adults

Vector-borne disease

- » Stagnant water bodies caused by heat or drought provide a habitat for pests, such as mosquitoes and ticks. Higher temperatures also change the life cycle of certain pests that transmit diseases, such as West Nile virus and

Gastrointestinal disease

- » Winter storms, flooding and harmful algal blooms can contaminate drinking water with viruses, parasites and bacteria that cause GI illness.





Oregon Climate and Health Program

The background of the title banner features a silhouette of a family (a man, a woman, and a child) walking towards the right against a sunset sky. The sun is a bright orange circle on the horizon, and the sky transitions from orange to a pale blue.

healthoregon.org/climate

Emily York, MPH | Program Lead

Emily.A.York@state.or.us

Oregon
Health
Authority