

---

**COLUMBIA  
River Treaty**



# Perspectives from BC CRT Local Governments' Committee

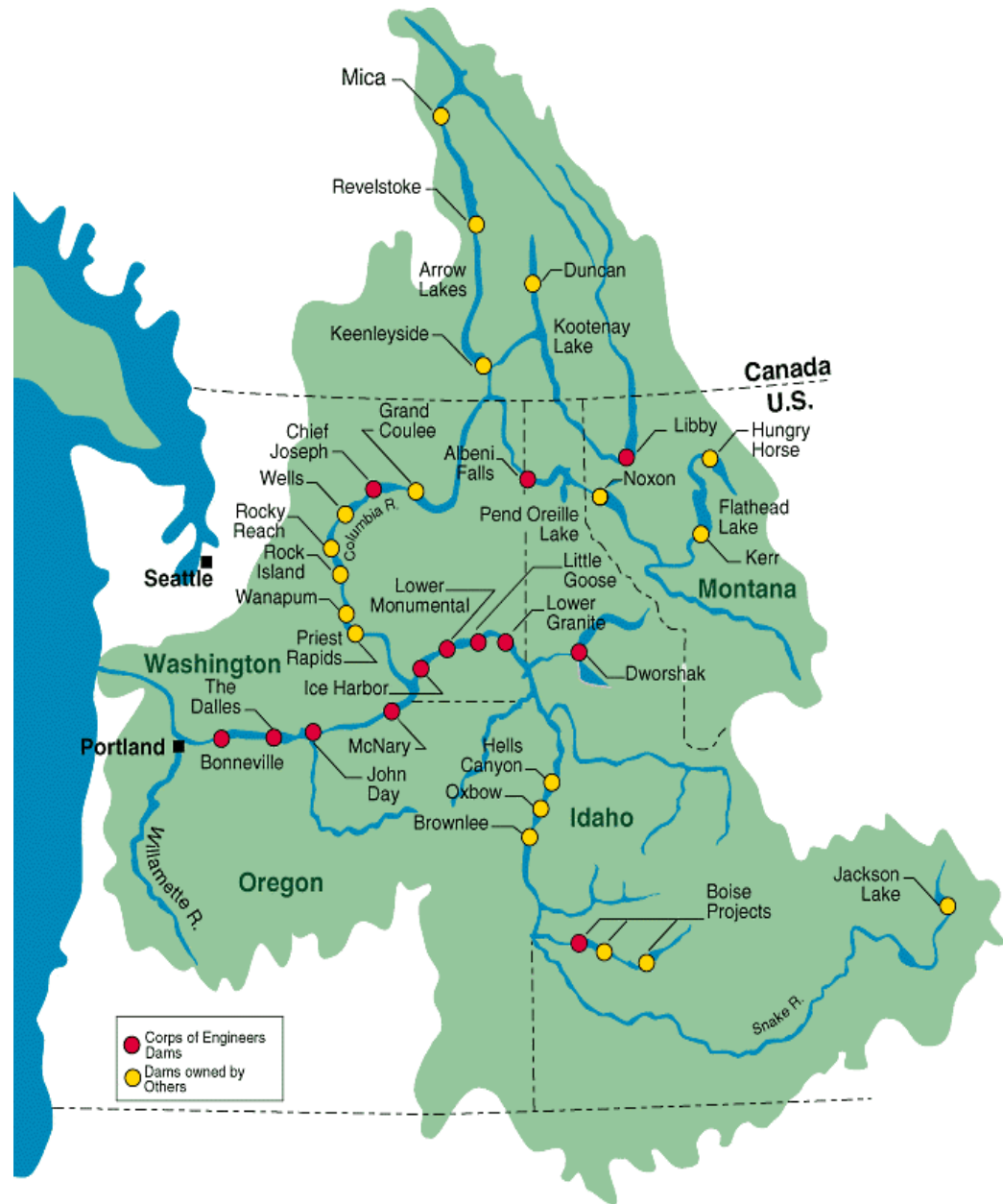
PNWER 2014 Summit  
Columbia River Treaty Session  
July, 2014

With support from Columbia Basin Trust

# Columbia River Basin

15% of area in  
Canada

35-50% of water  
flows from  
Canada –  
highest during  
big freshet years



# Initial Dam Impacts in BC

- 300,000 acres of fertile valley bottom land and ecosystems flooded – ~4x the size of Lake Roosevelt Reservoir
- 2,300 people displaced
- About 12 communities inundated
- Aboriginal cultural sites flooded
- Valley bottom roads lost





Burton prior to Hugh Keenleyside Dam, 1962



Burton after Hugh Keenleyside Dam, 2009

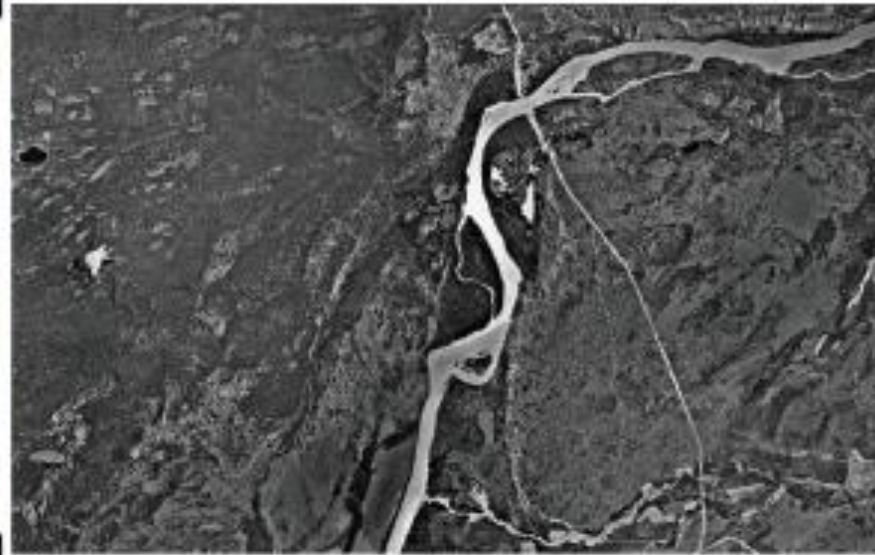




Coursier Creek prior to Mica Dam, 1962



Coursier Creek after Mica Dam, 2009



Kootenay River at Sand Creek prior to Libby Dam, 1950



Kootenay Reservoir at Sand Creek, 2005

# Ongoing Impacts from 'Industrial' Reservoirs

- 435 miles/700 km of reservoirs in BC (Lake Roosevelt is 150 miles)
- Annual fluctuations:  
Mica – 155 feet  
Duncan – 100 feet  
Kooconusa – 80 feet  
(same as Lake Roosevelt)  
Arrow – 40 feet



# Kinbasket Reservoir



25 miles of  
mudflats  
on  
Valemount's  
doorstep  
during  
spring  
drawdown



# Kinbasket Reservoir



Spring dust  
storm near  
Valemount

# Kinbasket Reservoir

Sea of stumps  
north of  
Golden  
during  
spring  
drawdown



# Kinbasket Reservoir



Annual  
debris  
removal



# Kinbasket Reservoir



Full pond at  
Bush Harbour  
boat ramp –  
but limited  
road access



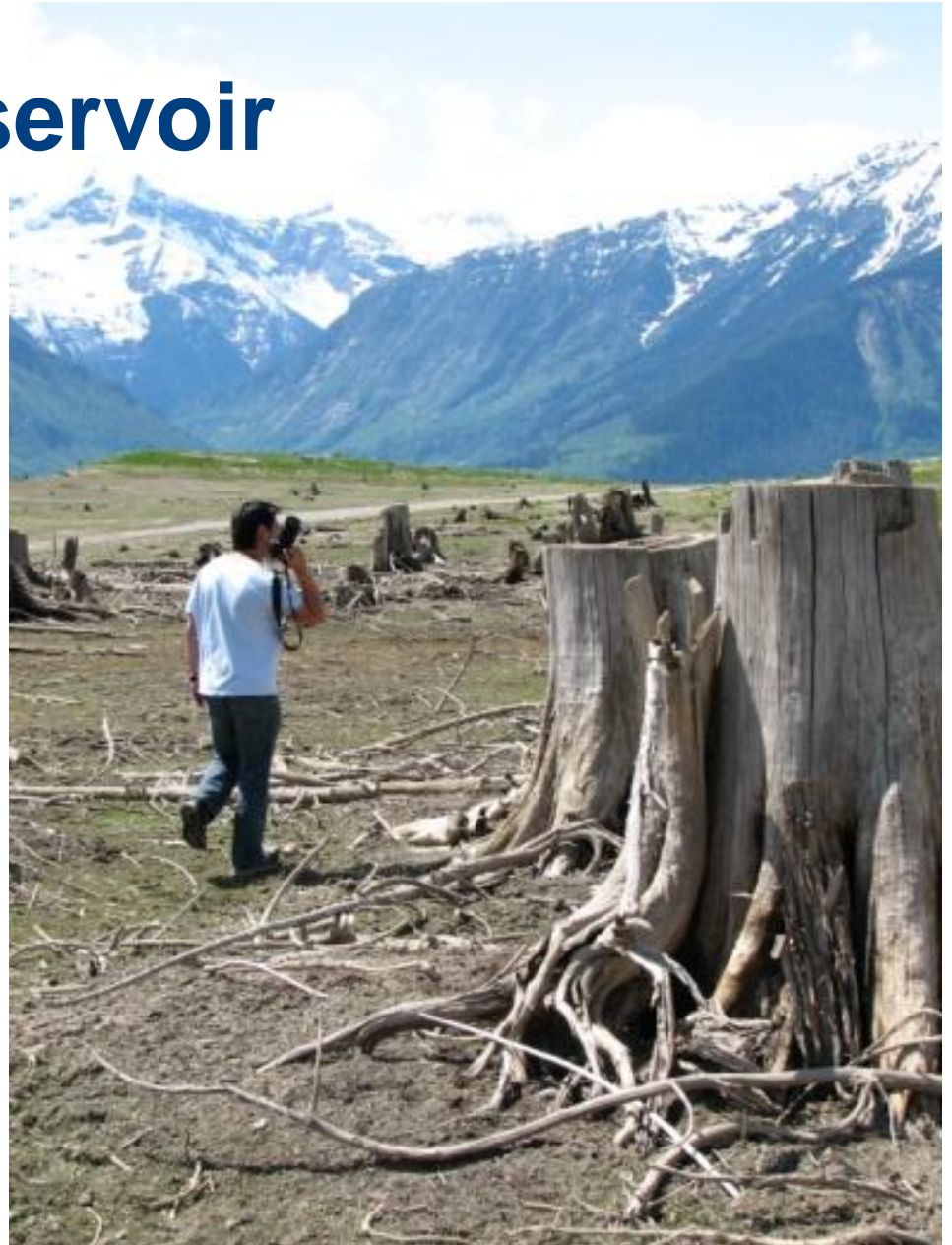
# Arrow Lakes Reservoir



40 feet of spring  
drawdown at  
Nakusp

# Arrow Lakes Reservoir

Sea of  
stumps  
during  
drawdown  
in the spring



# Arrow Lakes Reservoir



Dust storm in May near Burton



# Koocanusa Reservoir



80 feet of spring drawdown near Baynes Lake community





# Koocanusa Reservoir

Kikoman  
Provincial Park  
during spring  
drawdown

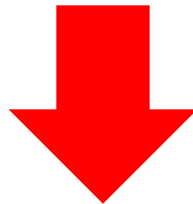
# Koocanusa Reservoir



Spring dust  
storm;  
houseboats  
high & dry

# Ongoing Impacts of 'Industrial Reservoirs'

- Ecosystem, fish and wildlife declines
- Erosion
- Air quality issues from dust storms
- Limited water access for recreation
- Boating safety risks & property damage from debris



**Quality of life, forestry, agriculture and  
tourism limited**

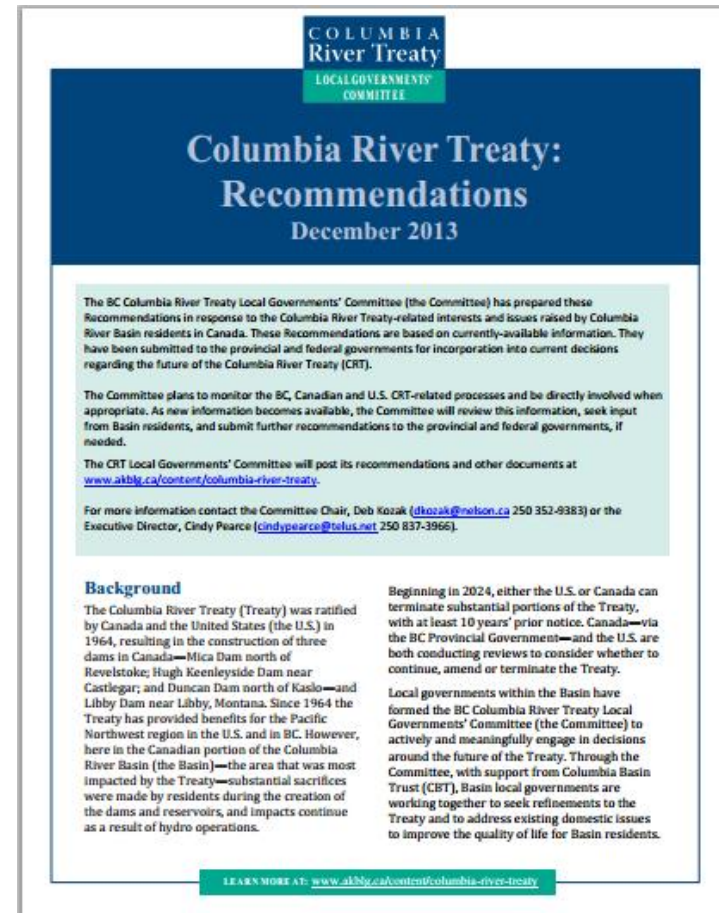
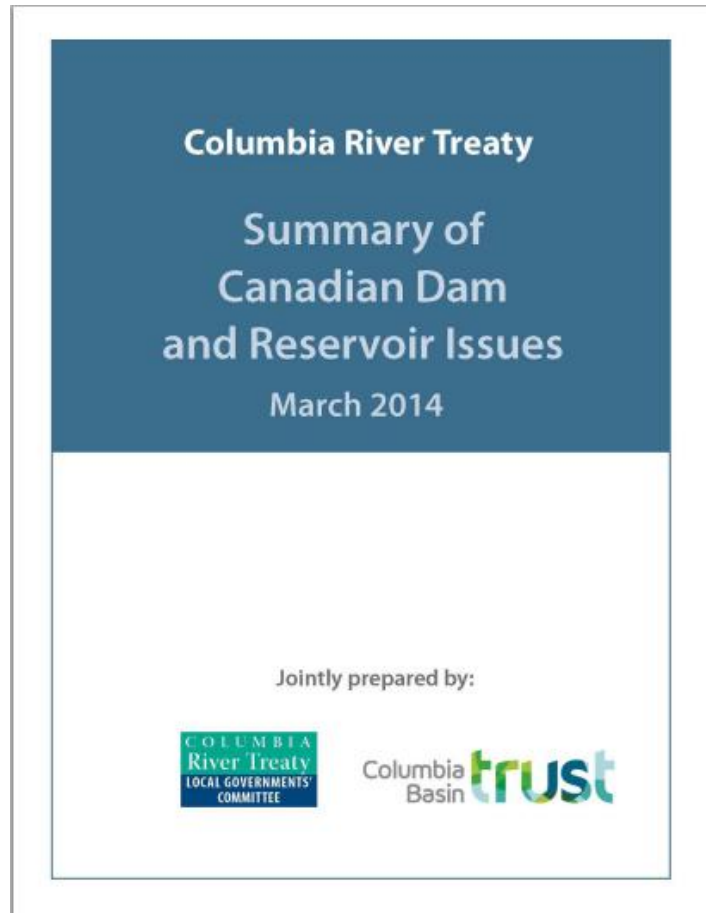
## **Committee Activities – 2011 to date**

- 3 sets of community meetings with the BC Review Team
- 3 workshops with advisors
- 2 trips to Montana, Washington and Oregon to meet with local governments & attend CRT related conferences
- Presentations at 2 US conferences

**1,100 Basin residents & advisors at 29 events & 35 meetings**



# Committee Reports



[www.akblg.ca/content/columbia-river-treaty](http://www.akblg.ca/content/columbia-river-treaty)

## *Photo Credits – With Thanks*

BC Hydro

Nicole Tremblay

Ron Oszust

David Gluns

Brian Sperling

Laura Keil

Korie Marshall

Hans Dummerauf

Touchstone Museum



# Columbia River ReConnect Mural



Trail Memorial Centre - Trail, B.C.